



GALLERIA

BRAND NEW PRICE DISCOUNT

\$20,000 off all One Bed

\$30,000 off all Two Beds

\$40,000 off all Three Beds

\$75,000 off all Premium Suites

LIMITED TIME OFFER:

ONLY 10% DOWN UNTIL OCCUPANCY!*

\$10,000 on Signing

Balance to 5% in 30 Days

5% in 365 Days

\$0 DEVELOPMENT CHARGES

FREE LOCKER WITH PURCHASE

Right to Lease During Occupancy

Free Assignment**

Free EV Outlet with the Purchase of a Parking Spot

almadev

PSR

BROKERAGE

PRICES AND SPECIFICATIONS SUBJECT TO CHANGE WITHOUT NOTICE. E. & O.E. JULY 2024

*Limited time offer: Buy with 10% down until occupancy. 5% Deposit due on Occupancy

**On the first Assignment for qualifying Assignee subject to Vendor's conditions for Assignments being met. Please see Sales Representative for details. Note: This Limited Time offer may be changed or withdrawn at any time without notice. This offer may not be combined with any other offer or promotion. Certain conditions apply. Premiums apply to floors, balconies, terraces and views.

Please see Sales Representative for full details. E. & O.E.

GALLERIA




HOT LIST AND INCENTIVES

PRESENTATION CENTRE · 1152 DUPONT STREET · GALLERIAONTHETHEPARK.COM · SALES@GALLERIAONTHETHEPARK.COM · 416-486-9666

Galleria On The Park is Toronto's most inspired new neighbourhood of condominiums, shops and places to gather, all located next to an incredible 8-acre park and a brand new 95,000sq ft. state-of-the-art community centre. Living at Galleria immerses you in a premium wellness lifestyle, with convenient access to on-site creative offices spaces, high quality retail outlets, and excellent transit connections. Walkable, generous sidewalks lined with trees and plants, and colorfully patterned streets creates an ideal environment for urban living.

Galleria III is under construction. New release of suites now available!

Unit #	Unit Type	Unit Model	Unit Sq. Ft.	Ext. Sq. Ft.	Exposure	Price	Limited Time Only Price
1 Bedroom / 1 Bedroom + Flex							
2804	1BR	1B 472	472	43	North	\$669,900	\$649,900
2611	1BR+D	1B+D 544	544	43	West	\$749,900	\$729,900
402	1BR+F	1B+F 631	631	43	East	\$844,900	\$821,900
415	1BR+F	1B+F 657	657	75	North	\$880,900	\$860,900
2 - 3 Bedrooms							
720	2BR	2B 643	643	65	North	\$869,900	\$839,900
2805	2BR	2B 675	675	95	North	\$909,900	\$879,900
2802	2BR	2B 786	786	85	North West	\$979,900	\$949,900
408	2BR+D	2B+D 854	854	32	West	\$1,004,900	\$971,900
730	2BR+D	2B+D 859	859	54	South West	\$1,024,900	\$994,900
426	3BR	3B 973	973	155	South	\$1,143,900	\$1,073,900
917	3BR	3B 994	994	360	East	\$1,239,900	\$1,199,900
909	3BR+D	3B+D 1110	1,110	158	North West	\$1,329,900	\$1,289,900
\$75,000 off Premium Suites!							
413	2BR	2B 655	655	41	West	\$880,900	\$805,900
323	2BR	2B 746	746	495	South	\$1,099,900	\$1,024,900
1011	2BR	2B 1046	1046	85	North	\$1,229,900	\$1,154,900
809	3BR	3B 1018	1018	269	West	\$1,204,900	\$1,126,900
2906	3BR	3B 1184	1184	411	South East	\$1,526,900	\$1,451,900
302	3BR	3B 1250-S	1250	270	South	\$1,504,900	\$1,426,900
806	3BR	3B 1250-W	1250	872	West	\$1,599,900	\$1,524,900
816	3BR	3B 1426	1426	3298	South East	\$1,999,900	\$1,924,900

BRAND NEW PRICE DISCOUNT

\$20,000 off all One Bed
 \$30,000 off all Two Beds
 \$40,000 off all Three Beds
 \$75,000 off all Premium Suites

LIMITED TIME OFFER: BUY WITH ONLY 10% DOWN UNTIL OCCUPANCY!*

\$10,000 on Signing
 Balance to 5% in 30 days
 5% in 365 days

\$0 Development Charges
Free Locker with Purchase

Right to Lease During Occupancy

Free Assignment**

Free EV Outlet with the Purchase of a Parking Spot!

Estimated Occupancy
 Spring 2026

Maintenance Fee

\$0.61/sq. Ft.
Includes: High Speed Internet & Almadev Link
Excludes: Heat, Water, Hydro

Property Taxes
 Approximately 1%

Parking: \$110,000 \$100,000 includes EV Outlet!

Available for units over 750SF

Parking Maintenance: \$59.95/ month
Locker Maintenance: \$29.95/ month

almadev

PSR
 BROKERAGE

PRICES AND SPECIFICATIONS SUBJECT TO CHANGE WITHOUT NOTICE. E. & O.E. JULY 2024

*Limited time offer. Buy with 10% down until occupancy. 5% Deposit due on Occupancy

**On the first Assignment for qualifying Assignee subject to Vendor's conditions for Assignments being met. Please see Sales Representative for details.

Note: This Limited Time offer may be changed or withdrawn at any time without notice.

This offer may not be combined with any other offer or promotion. Certain conditions apply.

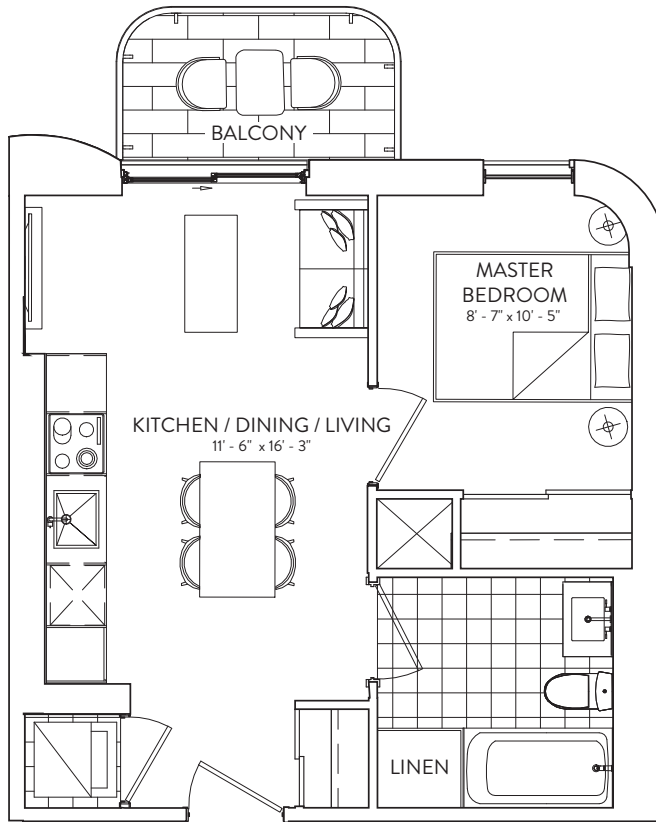
Premiums apply to floors, balconies, terraces and views. Please see Sales Representative for full details. E. & O.E.

1B 472

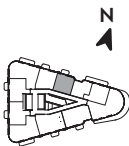
1 BEDROOM | 1 BATHROOM

INTERIOR: 472 SF | EXTERIOR: 43 SF

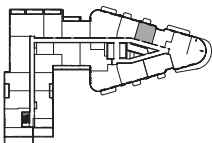
GALLERIA 



FLOORS 11-31



FLOORS 9-10

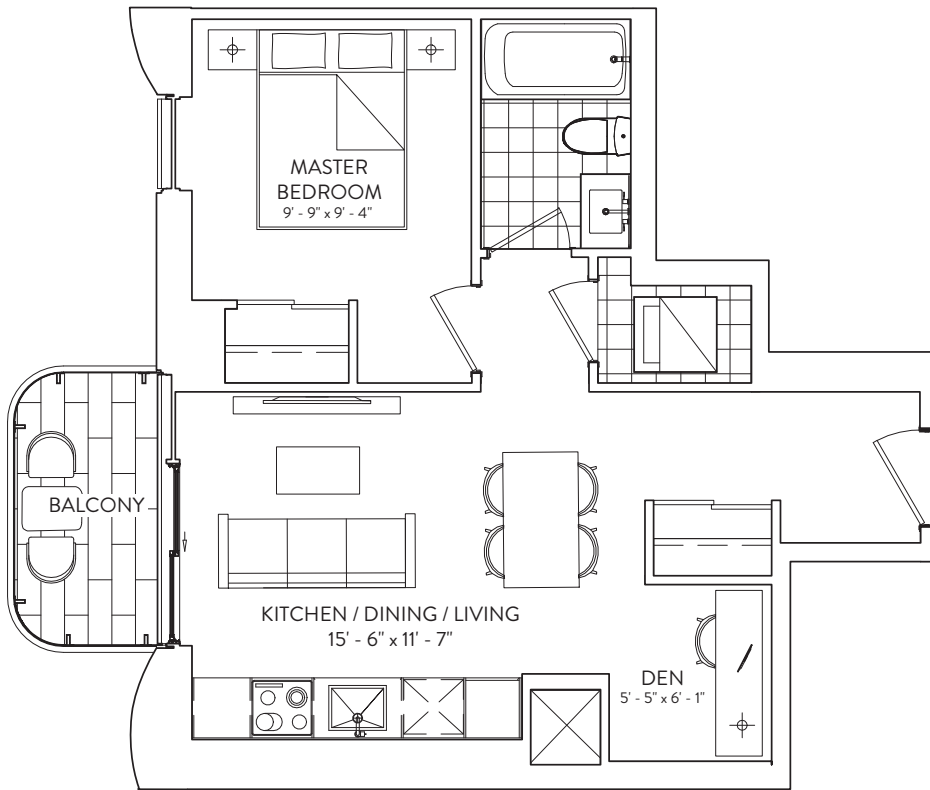


This plan is not to scale and is subject to architectural review and revision. The number of units per Floor and the number of floors may be reduced or increased at the vendor's sole discretion without notice. The purchaser acknowledges that the actual unit purchased may be a reverse layout to the plan shown. All materials, specifications, details and dimensions, if any, are approximate and subject to change without notice in order to comply with building site conditions and municipal, structural, vendor and/or architectural requirements. Actual living areas may vary from floor area stated. Floor areas have been measured and may vary in accordance with Bulletin #22 published by the Taroni Warranty Corporation. Bulkheads are not shown on this plan and may be located in areas of the Unit as required to provide venting and mechanical systems. Balconies, Terraces and Patios, if any, are exclusive use common elements shown for display purposes only and location and size are subject to change without notice. Window location, size and type may vary without notice. The length, width and directional position of the flooring are for illustration purposes only and may vary without notice. E.&O.E.

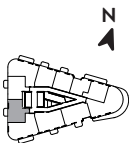
almadev

1B+D 544

1 BEDROOM + DEN | 1 BATHROOM
INTERIOR: 544 SF | EXTERIOR: 43 SF



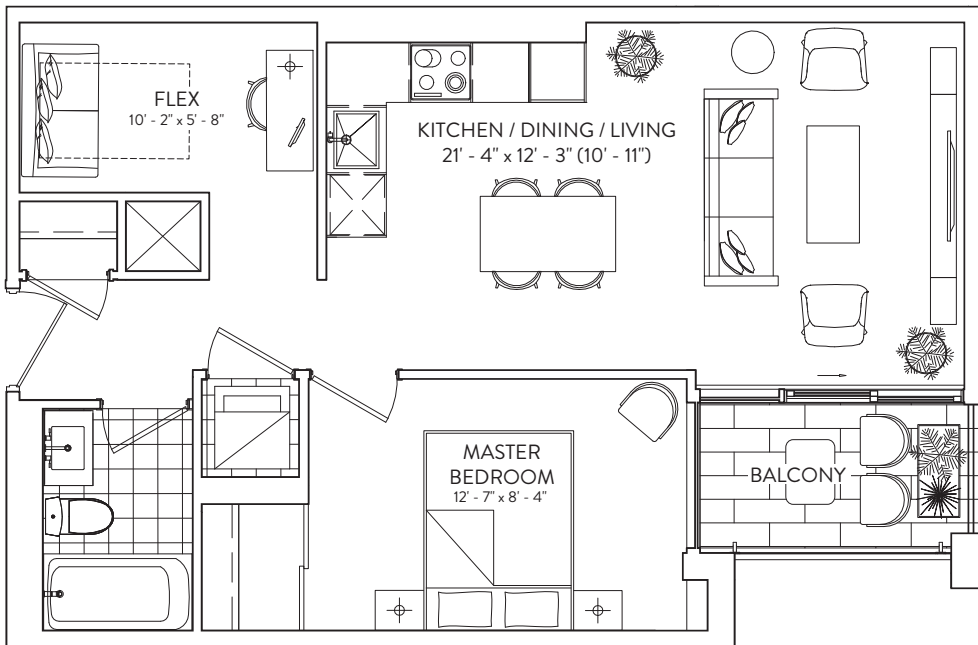
FLOORS 12-31



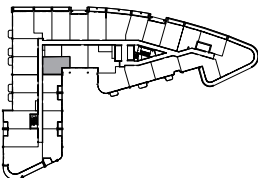
This plan is not to scale and is subject to architectural review and revision. The number of units per Floor and the number of floors may be reduced or increased at the vendor's sole discretion without notice. The purchaser acknowledges that the actual unit purchased may be a reverse layout to the plan shown. All materials, specifications, details and dimensions, if any, are approximate and subject to change without notice in order to comply with building site conditions and municipal, structural, vendor and/or architectural requirements. Actual living areas may vary from floor area stated. Floor areas have been measured and may vary in accordance with Bulletin #22 published by the Taroni Warranty Corporation. Bulkheads are not shown on this plan and may be located in areas of the Unit as required to provide venting and mechanical systems. Balconies, Terraces and Patios, if any, are exclusive use common elements shown for display purposes only and location and size are subject to change without notice. Window location, size and type may vary without notice. The length, width and directional position of the flooring are for illustration purposes only and may vary without notice. E.&O.E.

1B+F 631

1 BEDROOM + FLEX | 1 BATHROOM
INTERIOR: 631 SF | EXTERIOR: 43 SF



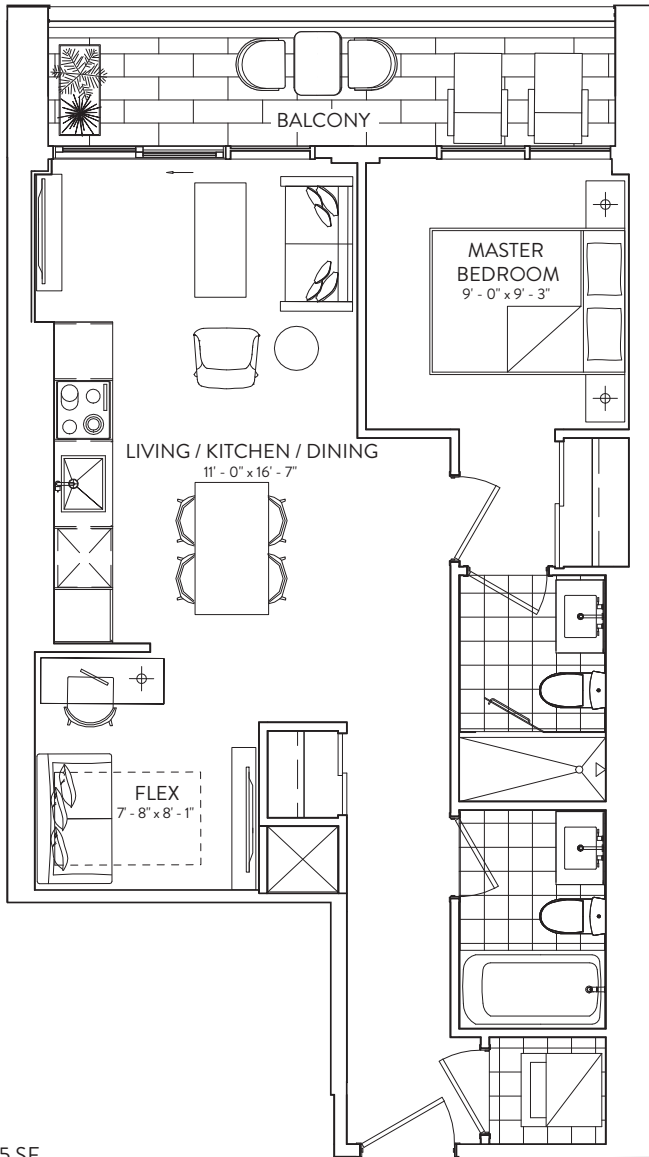
FLOORS 4 -7



This plan is not to scale and is subject to architectural review and revision. The number of units per Floor and the number of floors may be reduced or increased at the vendor's sole discretion without notice. The purchaser acknowledges that the actual unit purchased may be a reverse layout to the plan shown. All materials, specifications, details and dimensions, if any, are approximate and subject to change without notice in order to comply with building site conditions and municipal, structural, vendor and/or architectural requirements. Actual living areas may vary from floor area stated. Floor areas have been measured and may vary in accordance with Bulletin #22 published by the Tarion Warranty Corporation. Bulkheads are not shown on this plan and may be located in areas of the Unit as required to provide venting and mechanical systems. Balconies, Terraces and Patios, if any, are exclusive use common elements shown for display purposes only and location and size are subject to change without notice. Window location, size and type may vary without notice. The length, width and directional position of the flooring are for illustration purposes only and may vary without notice. E.&O.E.

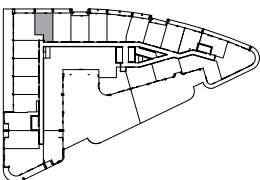
1B+F 657

1 BEDROOM + FLEX | 2 BATHROOM
INTERIOR: 657 SF | EXTERIOR: 65 SF



BALCONY
FLOORS 4-7 | EXTERIOR: 75 SF
FLOOR 3 | EXTERIOR: 65 SF

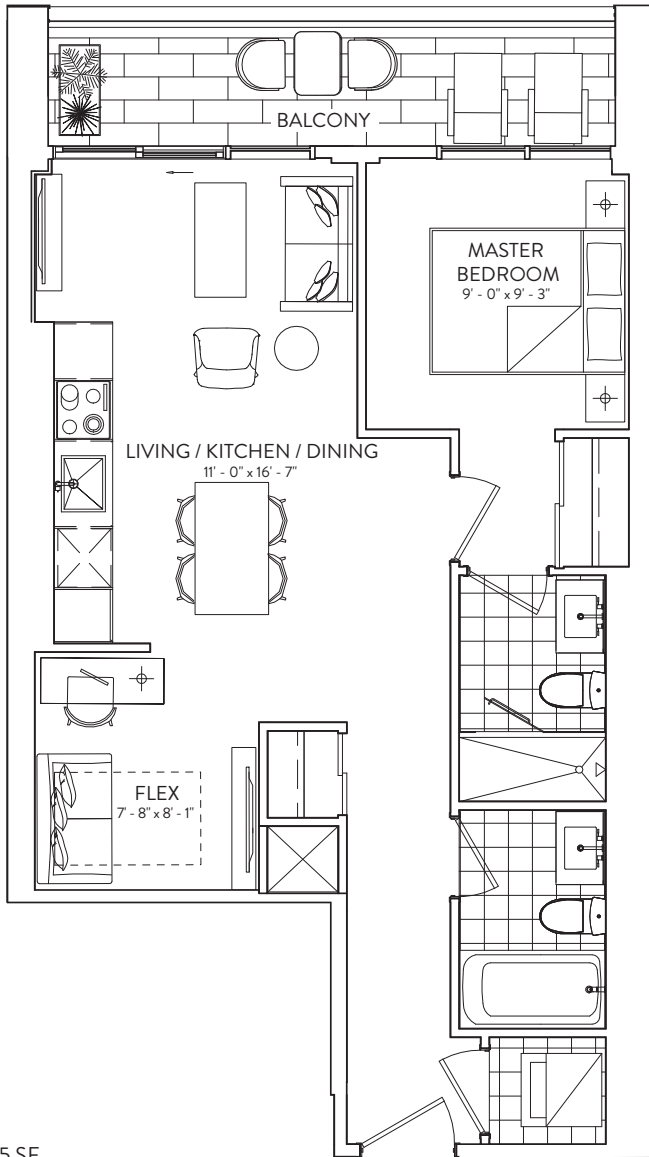
FLOORS 3-7



This plan is not to scale and is subject to architectural review and revision. The number of units per Floor and the number of floors may be reduced or increased at the vendor's sole discretion without notice. The purchaser acknowledges that the actual unit purchased may be a reverse layout to the plan shown. All materials, specifications, details and dimensions, if any, are approximate and subject to change without notice in order to comply with building site conditions and municipal, structural, vendor and/or architectural requirements. Actual living areas may vary from floor area stated. Floor areas have been measured and may vary in accordance with Bulletin #22 published by the Tarion Warranty Corporation. Bulkheads are not shown on this plan and may be located in areas of the Unit as required to provide venting and mechanical systems. Balconies, Terraces and Patios, if any, are exclusive use common elements shown for display purposes only and location and size are subject to change without notice. Window location, size and type may vary without notice. The length, width and directional position of the flooring are for illustration purposes only and may vary without notice. E.&O.E.

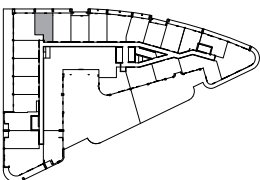
1B+F 657

1 BEDROOM + FLEX | 2 BATHROOM
INTERIOR: 657 SF | EXTERIOR: 65 SF



BALCONY
FLOORS 4-7 | EXTERIOR: 75 SF
FLOOR 3 | EXTERIOR: 65 SF

FLOORS 3-7



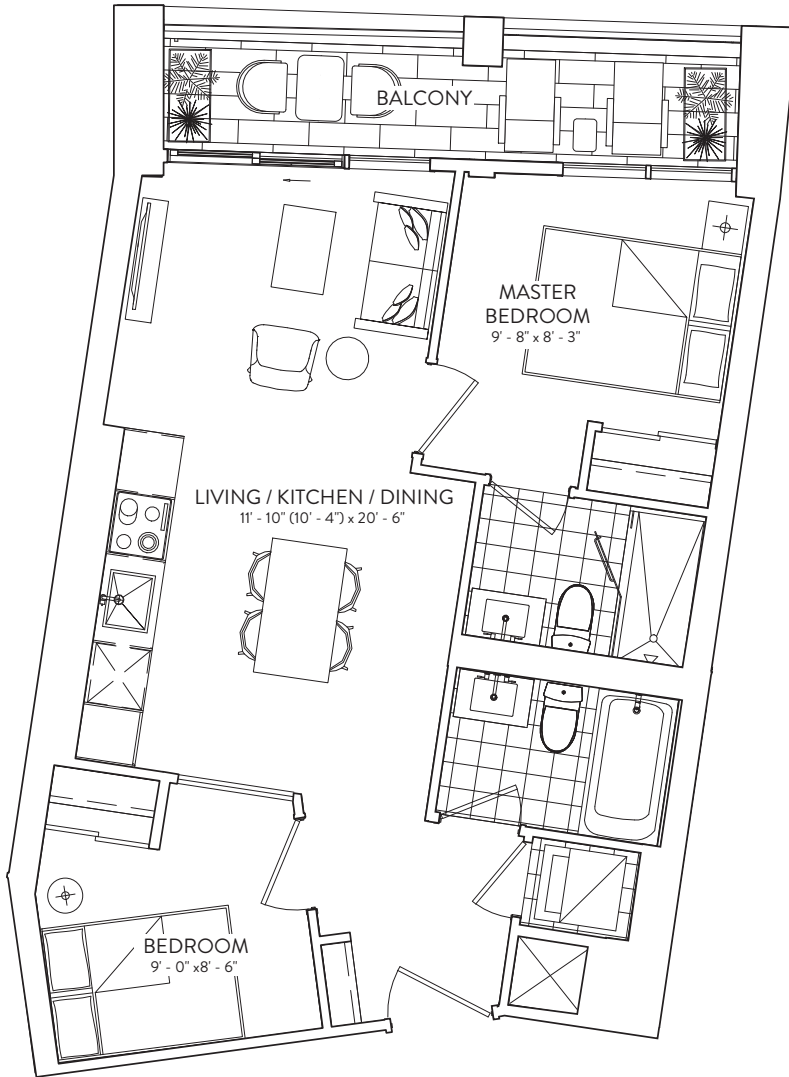
This plan is not to scale and is subject to architectural review and revision. The number of units per Floor and the number of floors may be reduced or increased at the vendor's sole discretion without notice. The purchaser acknowledges that the actual unit purchased may be a reverse layout to the plan shown. All materials, specifications, details and dimensions, if any, are approximate and subject to change without notice in order to comply with building site conditions and municipal, structural, vendor and/or architectural requirements. Actual living areas may vary from floor area stated. Floor areas have been measured and may vary in accordance with Bulletin #22 published by the Tarion Warranty Corporation. Bulkheads are not shown on this plan and may be located in areas of the Unit as required to provide venting and mechanical systems. Balconies, Terraces and Patios, if any, are exclusive use common elements shown for display purposes only and location and size are subject to change without notice. Window location, size and type may vary without notice. The length, width and directional position of the flooring are for illustration purposes only and may vary without notice. E.&O.E.

2B 643

2 BEDROOM | 2 BATHROOM

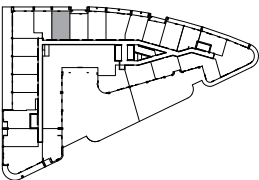
INTERIOR: 643 SF | EXTERIOR: 70 SF

GALLERIA 



BALCONY
FLOORS 4-7 | EXTERIOR: 65 SF
FLOOR 3 | EXTERIOR: 70 SF

FLOORS 3-7



This plan is not to scale and is subject to architectural review and revision. The number of units per Floor and the number of floors may be reduced or increased at the vendor's sole discretion without notice. The purchaser acknowledges that the actual unit purchased may be a reverse layout to the plan shown. All materials, specifications, details and dimensions, if any, are approximate and subject to change without notice in order to comply with building site conditions and municipal, structural, vendor and/or architectural requirements. Actual living areas may vary from floor area stated. Floor areas have been measured and may vary in accordance with Bulletin #22 published by the Tarion Warranty Corporation. Bulkheads are not shown on this plan and may be located in areas of the Unit as required to provide venting and mechanical systems. Balconies, Terraces and Patios, if any, are exclusive use common elements shown for display purposes only and location and size are subject to change without notice. Window location, size and type may vary without notice. The length, width and directional position of the flooring are for illustration purposes only and may vary without notice. E.&O.E.

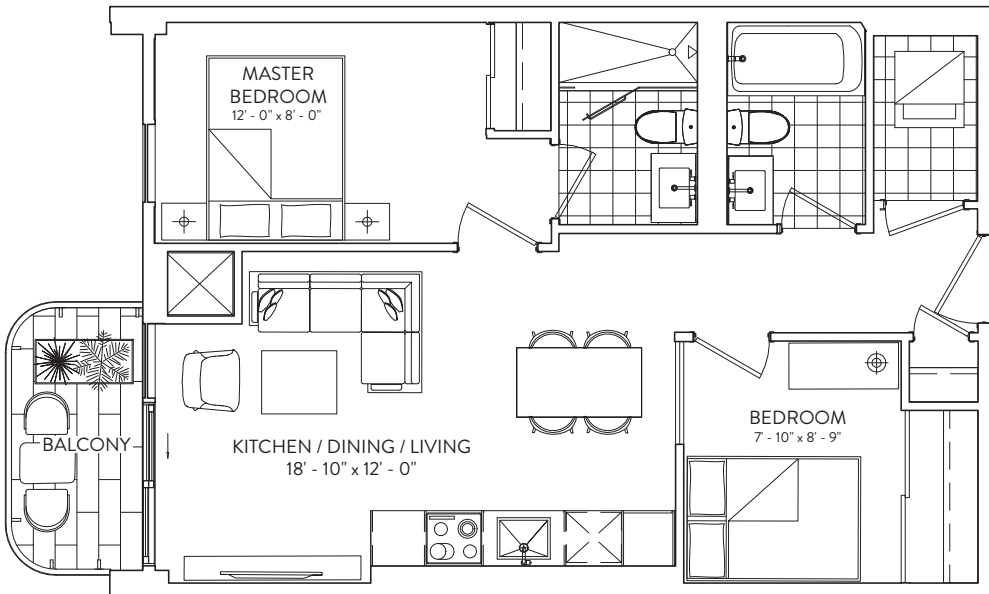
almadev

2B 655

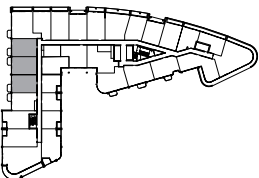
2 BEDROOM | 2 BATHROOM

INTERIOR: 655 SF | EXTERIOR: 41 SF

GALLERIA 



FLOORS 4 -7

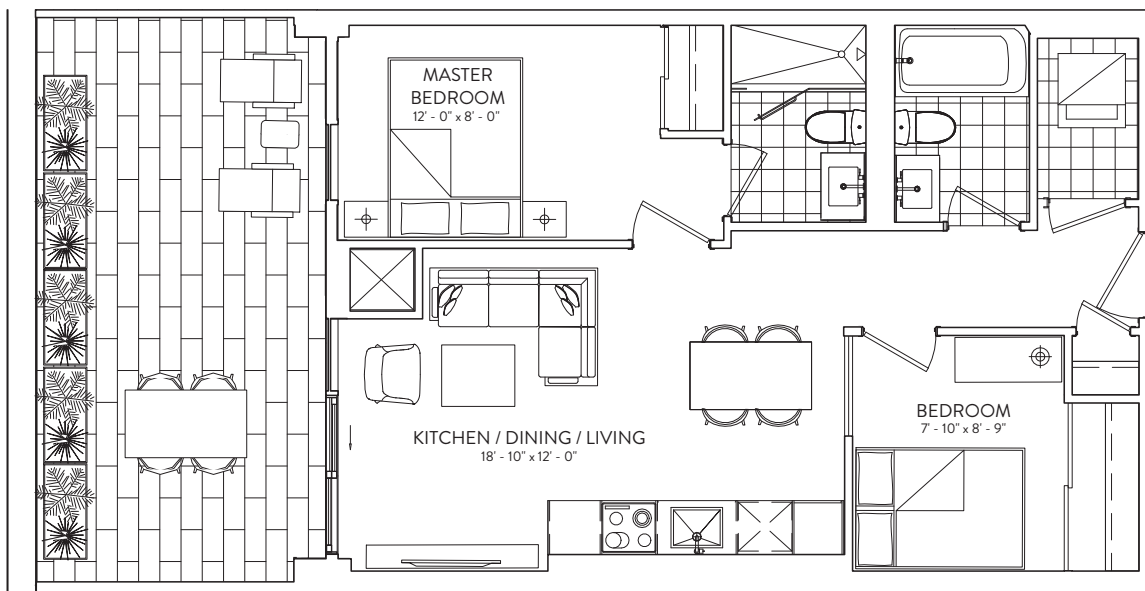


This plan is not to scale and is subject to architectural review and revision. The number of units per Floor and the number of floors may be reduced or increased at the vendor's sole discretion without notice. The purchaser acknowledges that the actual unit purchased may be a reverse layout to the plan shown. All materials, specifications, details and dimensions, if any, are approximate and subject to change without notice in order to comply with building site conditions and municipal, structural, vendor and/or architectural requirements. Actual living areas may vary from floor area stated. Floor areas have been measured and may vary in accordance with Bulletin #22 published by the Taroni Warranty Corporation. Bulkheads are not shown on this plan and may be located in areas of the Unit as required to provide venting and mechanical systems. Balconies, Terraces and Patios, if any, are exclusive use common elements shown for display purposes only and location and size are subject to change without notice. Window location, size and type may vary without notice. The length, width and directional position of the flooring are for illustration purposes only and may vary without notice. E.&O.E.

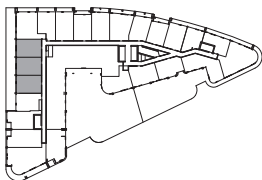
almadev

2B 655

INTERIOR: 655 SF | EXTERIOR: 226 SF | 2 BEDROOM | 2 BATHROOM



FLOOR 3



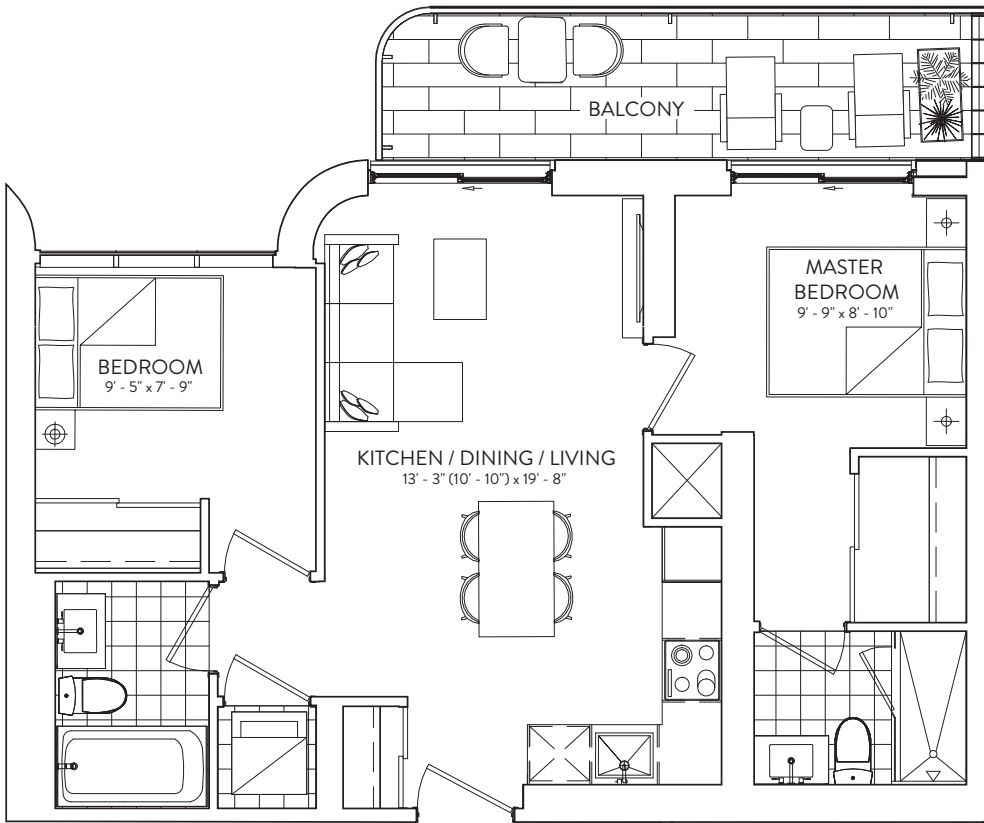
This plan is not to scale and is subject to architectural review and revision. The number of units per level and the number of floors may be reduced or increased at the vendor's sole discretion without notice. The purchaser acknowledges that the actual unit purchased may be a reverse layout to the plan shown. All materials, specifications, details and dimensions, if any, are approximate and subject to change without notice in order to comply with building site conditions and municipal, structural, vendor and/or architectural requirements. Actual living areas may vary from floor area stated. Floor areas have been measured and may vary in accordance with Bulletin #22 published by the Tarion Warranty Corporation. Bulkheads are not shown on this plan and may be located in areas of the Unit as required to provide venting and mechanical systems. Balconies, Terraces and Patios, if any, are exclusive use common elements shown for display purposes only and location and size are subject to change without notice. Window location, size and type may vary without notice. The length, width and directional position of the flooring are for illustration purposes only and may vary without notice. E.&O.E.

2B 675

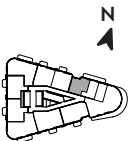
2 BEDROOM | 2 BATHROOM

INTERIOR: 675 SF | EXTERIOR: 95 SF

GALLERIA 



FLOORS 28-31

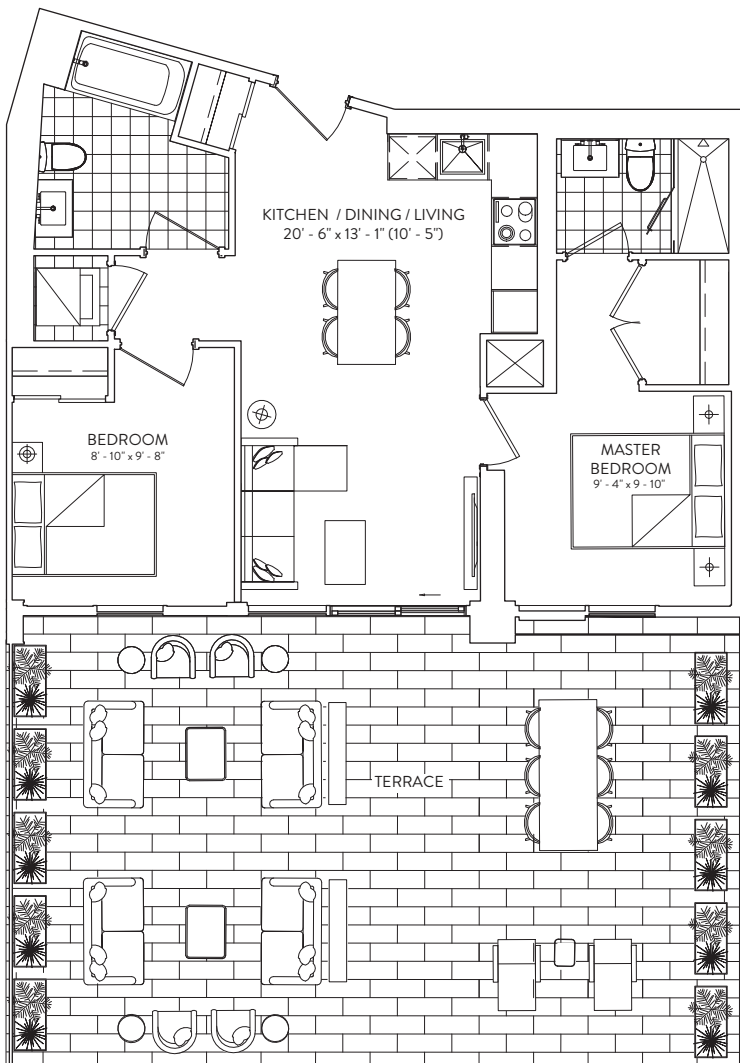


This plan is not to scale and is subject to architectural review and revision. The number of units per Floor and the number of floors may be reduced or increased at the vendor's sole discretion without notice. The purchaser acknowledges that the actual unit purchased may be a reverse layout to the plan shown. All materials, specifications, details and dimensions, if any, are approximate and subject to change without notice in order to comply with building site conditions and municipal, structural, vendor and/or architectural requirements. Actual living areas may vary from floor area stated. Floor areas have been measured and may vary in accordance with Bulletin #22 published by the Taroni Warranty Corporation. Bulkheads are not shown on this plan and may be located in areas of the Unit as required to provide venting and mechanical systems. Balconies, Terraces and Patios, if any, are exclusive use common elements shown for display purposes only and location and size are subject to change without notice. Window location, size and type may vary without notice. The length, width and directional position of the flooring are for illustration purposes only and may vary without notice. E.&O.E.

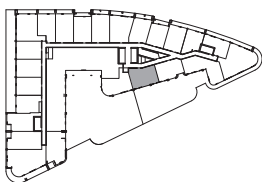
almadev

2B 746

INTERIOR: 746 SF | EXTERIOR: 495 SF | 2 BEDROOM | 2 BATHROOM



FLOOR 3

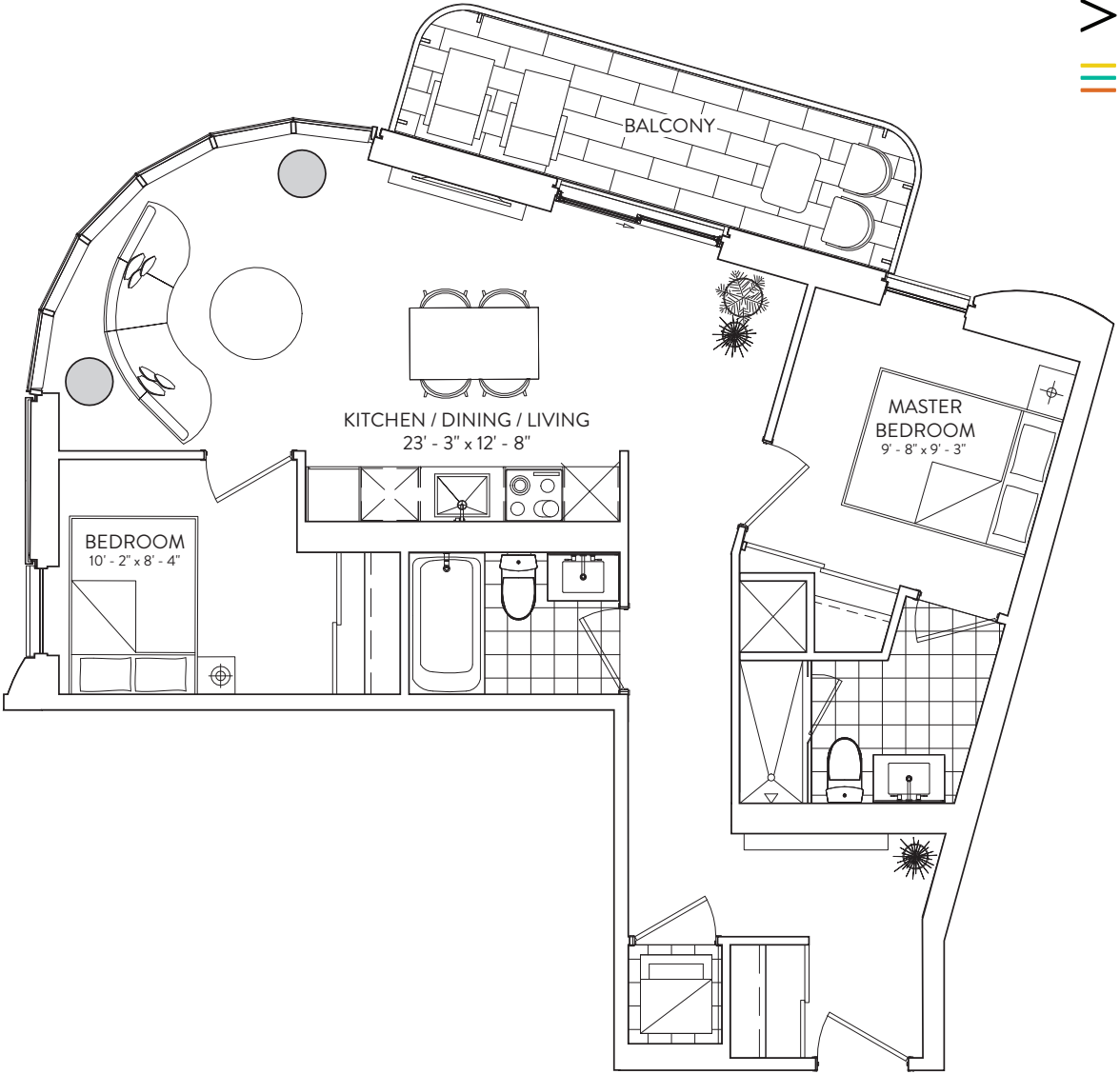


This plan is not to scale and is subject to architectural review and revision. The number of units per level and the number of floors may be reduced or increased at the vendor's sole discretion without notice. The purchaser acknowledges that the actual unit purchased may be a reverse layout to the plan shown. All materials, specifications, details and dimensions, if any, are approximate and subject to change without notice in order to comply with building site conditions and municipal, structural, vendor and/or architectural requirements. Actual living areas may vary from floor area stated. Floor areas have been measured and may vary in accordance with Bulletin #22 published by the Tarion Warranty Corporation. Bulkheads are not shown on this plan and may be located in areas of the Unit as required to provide venting and mechanical systems. Balconies, Terraces and Patios, if any, are exclusive use common elements shown for display purposes only and location and size are subject to change without notice. Window location, size and type may vary without notice. The length, width and directional position of the flooring are for illustration purposes only and may vary without notice. E.&O.E.

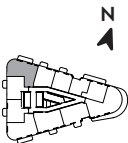
2B 786

2 BEDROOM | 2 BATHROOM

INTERIOR: 786 SF | EXTERIOR: 85 SF



FLOORS 12-31

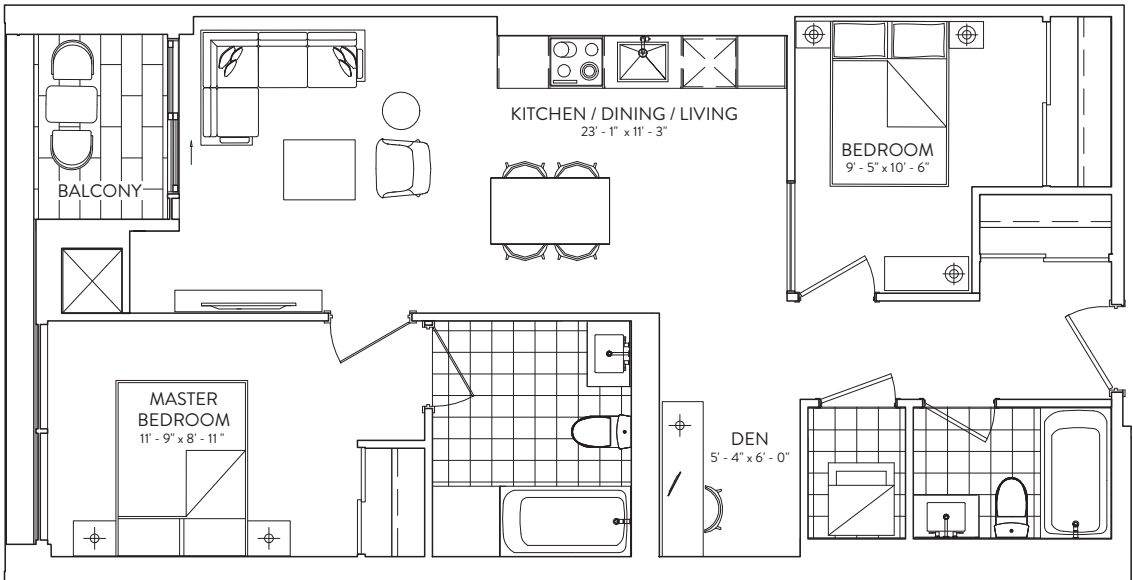


This plan is not to scale and is subject to architectural review and revision. The number of units per Floor and the number of floors may be reduced or increased at the vendor's sole discretion without notice. The purchaser acknowledges that the actual unit purchased may be a reverse layout to the plan shown. All materials, specifications, details and dimensions, if any, are approximate and subject to change without notice in order to comply with building site conditions and municipal, structural, vendor and/or architectural requirements. Actual living areas may vary from floor area stated. Floor areas have been measured and may vary in accordance with Bulletin #22 published by the Taroni Warranty Corporation. Bulkheads are not shown on this plan and may be located in areas of the Unit as required to provide venting and mechanical systems. Balconies, Terraces and Patios, if any, are exclusive use common elements shown for display purposes only and location and size are subject to change without notice. Window location, size and type may vary without notice. The length, width and directional position of the flooring are for illustration purposes only and may vary without notice. E.&O.E.

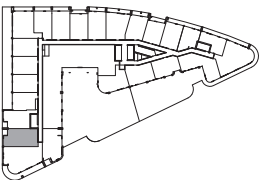
2B+D 854

2 BEDROOM + DEN | 2 BATHROOM
INTERIOR: 854 SF | EXTERIOR: 32 SF

GALLERIA 



FLOORS 3-4

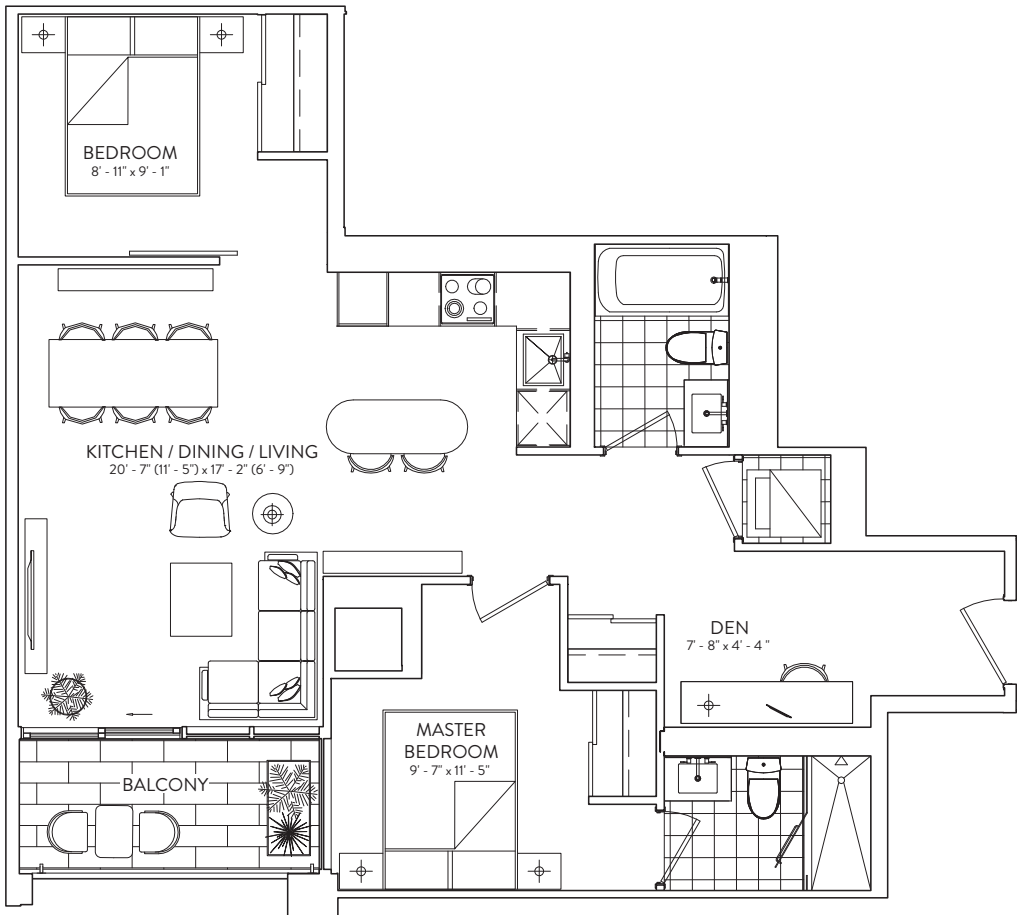


This plan is not to scale and is subject to architectural review and revision. The number of units per Floor and the number of floors may be reduced or increased at the vendor's sole discretion without notice. The purchaser acknowledges that the actual unit purchased may be a reverse layout to the plan shown. All materials, specifications, details and dimensions, if any, are approximate and subject to change without notice in order to comply with building site conditions and municipal, structural, vendor and/or architectural requirements. Actual living areas may vary from floor area stated. Floor areas have been measured and may vary in accordance with Bulletin #22 published by the Tarion Warranty Corporation. Bulkheads are not shown on this plan and may be located in areas of the Unit as required to provide venting and mechanical systems. Balconies, Terraces and Patios, if any, are exclusive use common elements shown for display purposes only and location and size are subject to change without notice. Window location, size and type may vary without notice. The length, width and directional position of the flooring are for illustration purposes only and may vary without notice. E.&O.E.

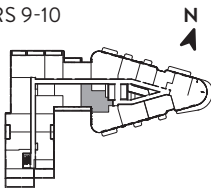
almadev

2B+D 859

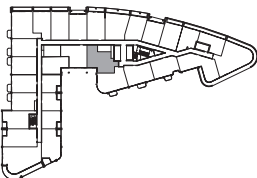
2 BEDROOM + DEN | 2 BATHROOM
INTERIOR: 859 SF | EXTERIOR: 54 SF



FLOORS 9-10



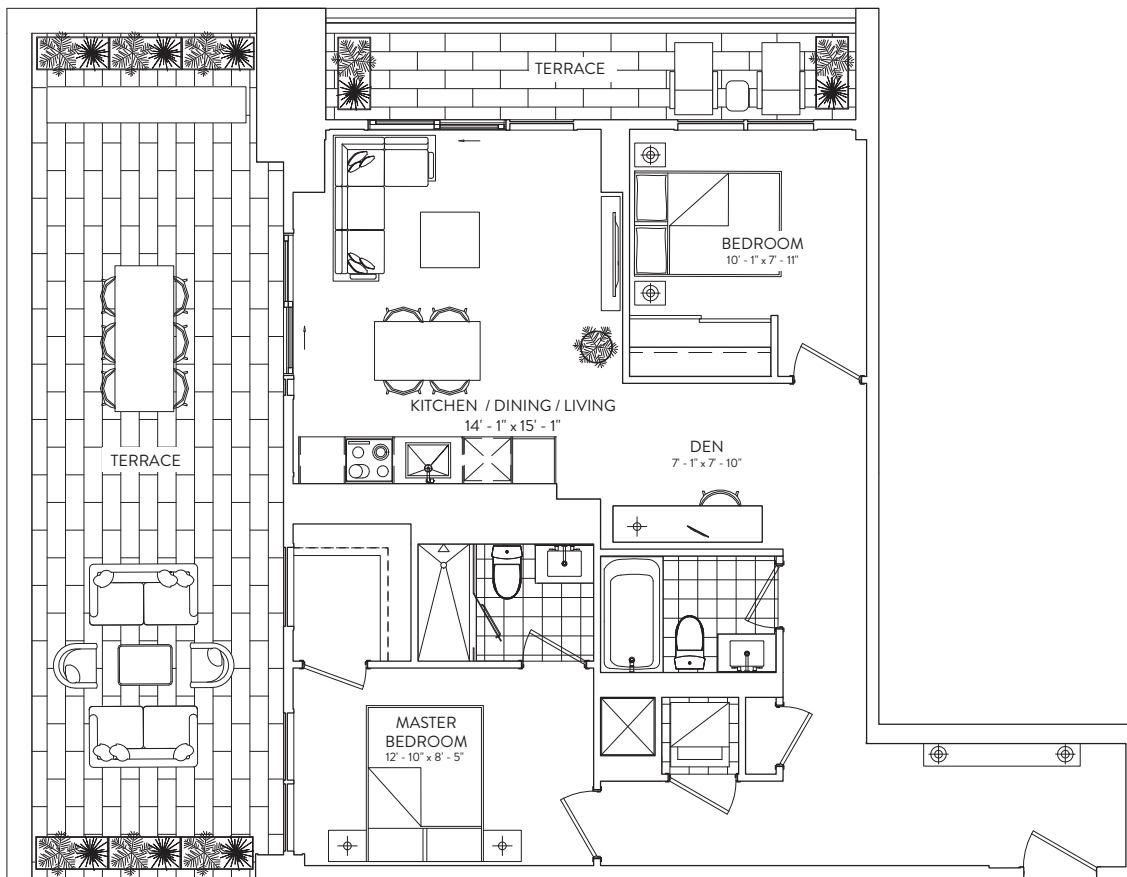
FLOORS 4-7



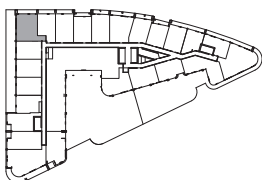
This plan is not to scale and is subject to architectural review and revision. The number of units per Floor and the number of floors may be reduced or increased at the vendor's sole discretion without notice. The purchaser acknowledges that the actual unit purchased may be a reverse layout to the plan shown. All materials, specifications, details and dimensions, if any, are approximate and subject to change without notice in order to comply with building site conditions and municipal, structural, vendor and/or architectural requirements. Actual living areas may vary from floor area stated. Floor areas have been measured and may vary in accordance with Bulletin #22 published by the Tarion Warranty Corporation. Bulkheads are not shown on this plan and may be located in areas of the Unit as required to provide venting and mechanical systems. Balconies, Terraces and Patios, if any, are exclusive use common elements shown for display purposes only and location and size are subject to change without notice. Window location, size and type may vary without notice. The length, width and directional position of the flooring are for illustration purposes only and may vary without notice. E.&O.E.

2B+D 917

INTERIOR: 917 SF | EXTERIOR: 477 SF | 2 BEDROOM + DEN | 2 BATHROOM



FLOOR 3



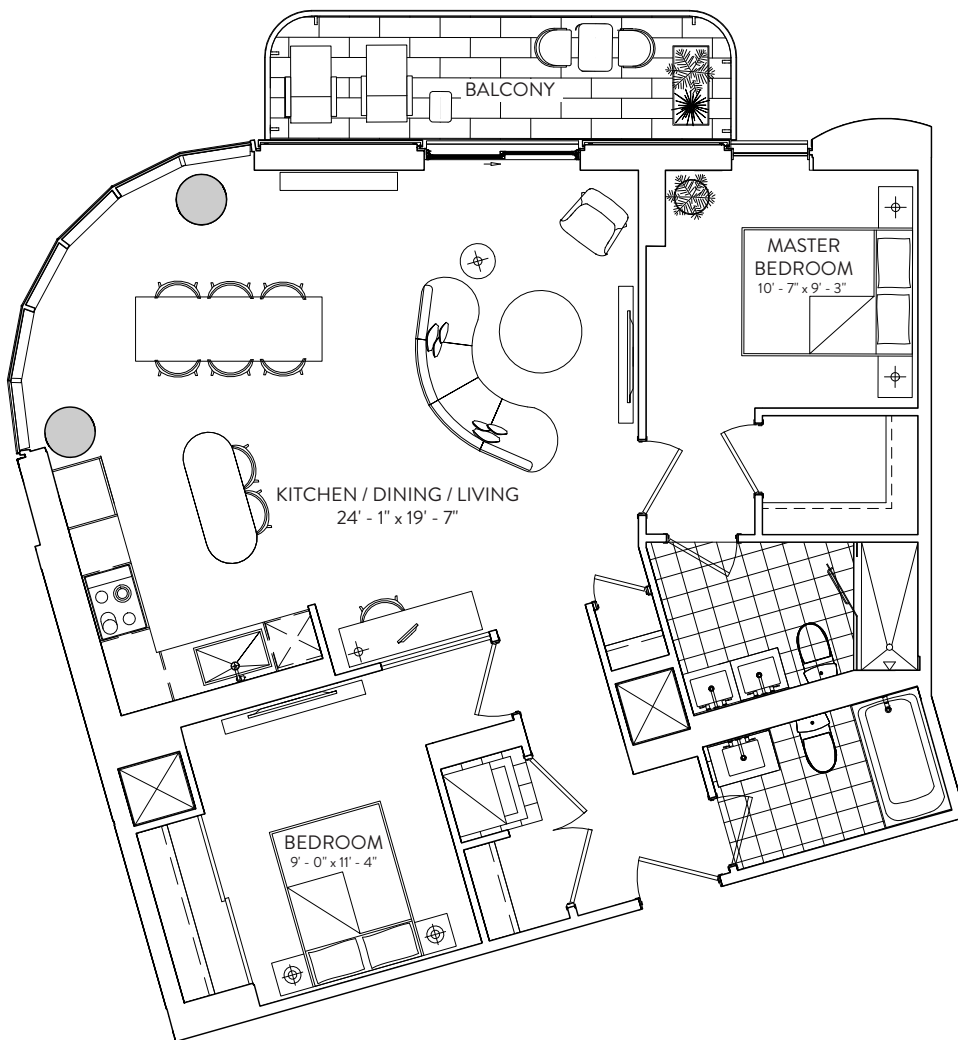
This plan is not to scale and is subject to architectural review and revision. The number of units per level and the number of floors may be reduced or increased at the vendor's sole discretion without notice. The purchaser acknowledges that the actual unit purchased may be a reverse layout to the plan shown. All materials, specifications, details and dimensions, if any, are approximate and subject to change without notice in order to comply with building site conditions and municipal, structural, vendor and/or architectural requirements. Actual living areas may vary from floor area stated. Floor areas have been measured and may vary in accordance with Bulletin #22 published by the Tarion Warranty Corporation. Bulkheads are not shown on this plan and may be located in areas of the Unit as required to provide venting and mechanical systems. Balconies, Terraces and Patios, if any, are exclusive use common elements shown for display purposes only and location and size are subject to change without notice. Window location, size and type may vary without notice. The length, width and directional position of the flooring are for illustration purposes only and may vary without notice. E.&O.E.

2B 1046

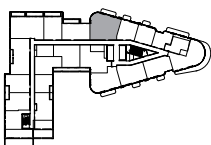
2 BEDROOM | 2 BATHROOM

INTERIOR: 1046 SF | EXTERIOR: 85 SF

GALLERIA 



FLOORS 9-10

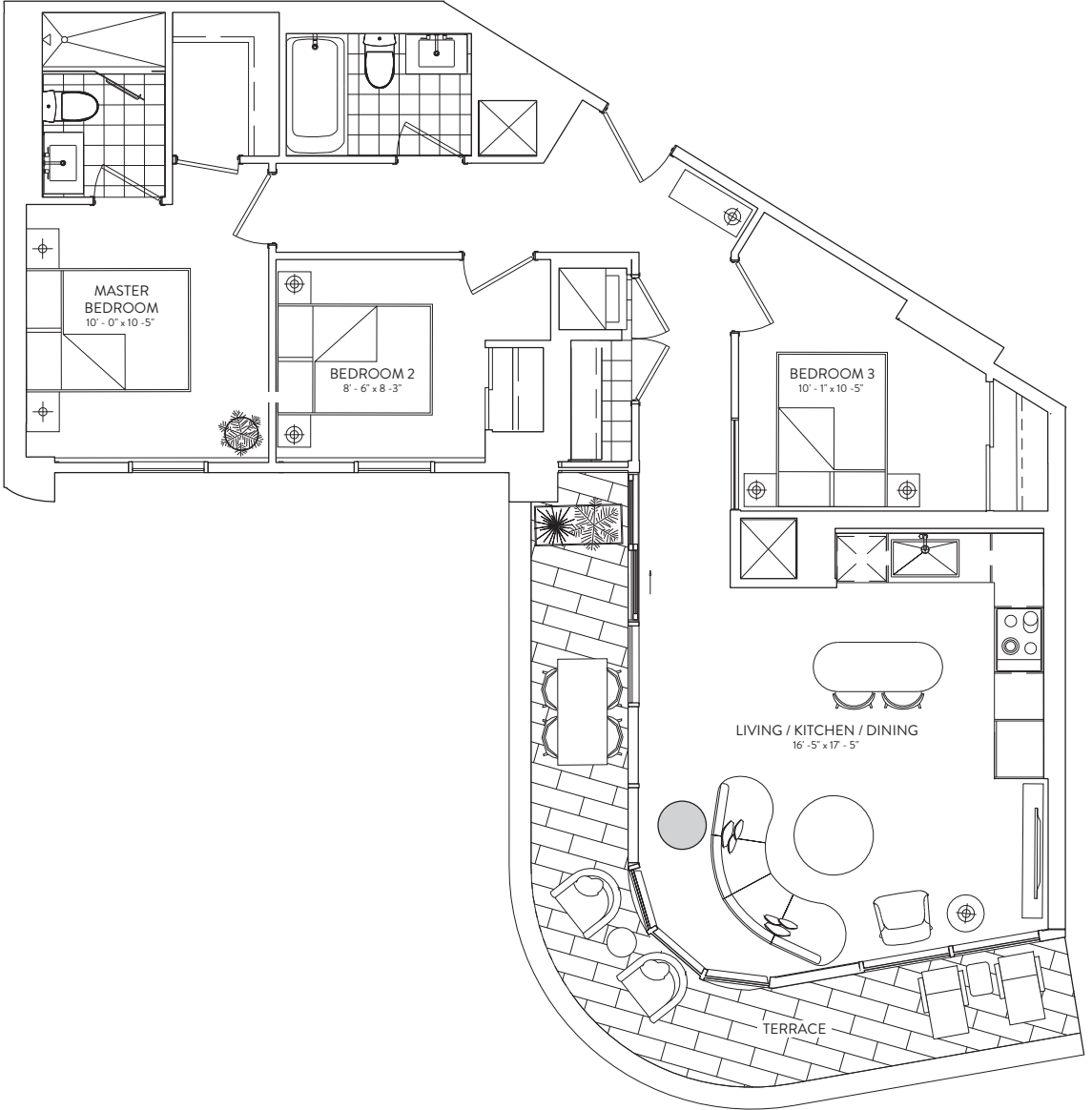


This plan is not to scale and is subject to architectural review and revision. The number of units per Floor and the number of floors may be reduced or increased at the vendor's sole discretion without notice. The purchaser acknowledges that the actual unit purchased may be a reverse layout to the plan shown. All materials, specifications, details and dimensions, if any, are approximate and subject to change without notice in order to comply with building site conditions and municipal, structural, vendor and/or architectural requirements. Actual living areas may vary from floor area stated. Floor areas have been measured and may vary in accordance with Bulletin #22 published by the Tarion Warranty Corporation. Bulkheads are not shown on this plan and may be located in areas of the Unit as required to provide venting and mechanical systems. Balconies, Terraces and Patios, if any, are exclusive use common elements shown for display purposes only and location and size are subject to change without notice. Window location, size and type may vary without notice. The length, width and directional position of the flooring are for illustration purposes only and may vary without notice. E.&O.E.

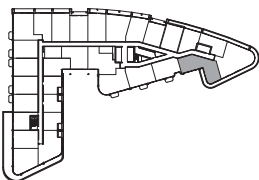
almadev

3B 973

INTERIOR: 973 SF | EXTERIOR: 156 SF 3 BEDROOM | 2 BATHROOM



FLOORS 3-7



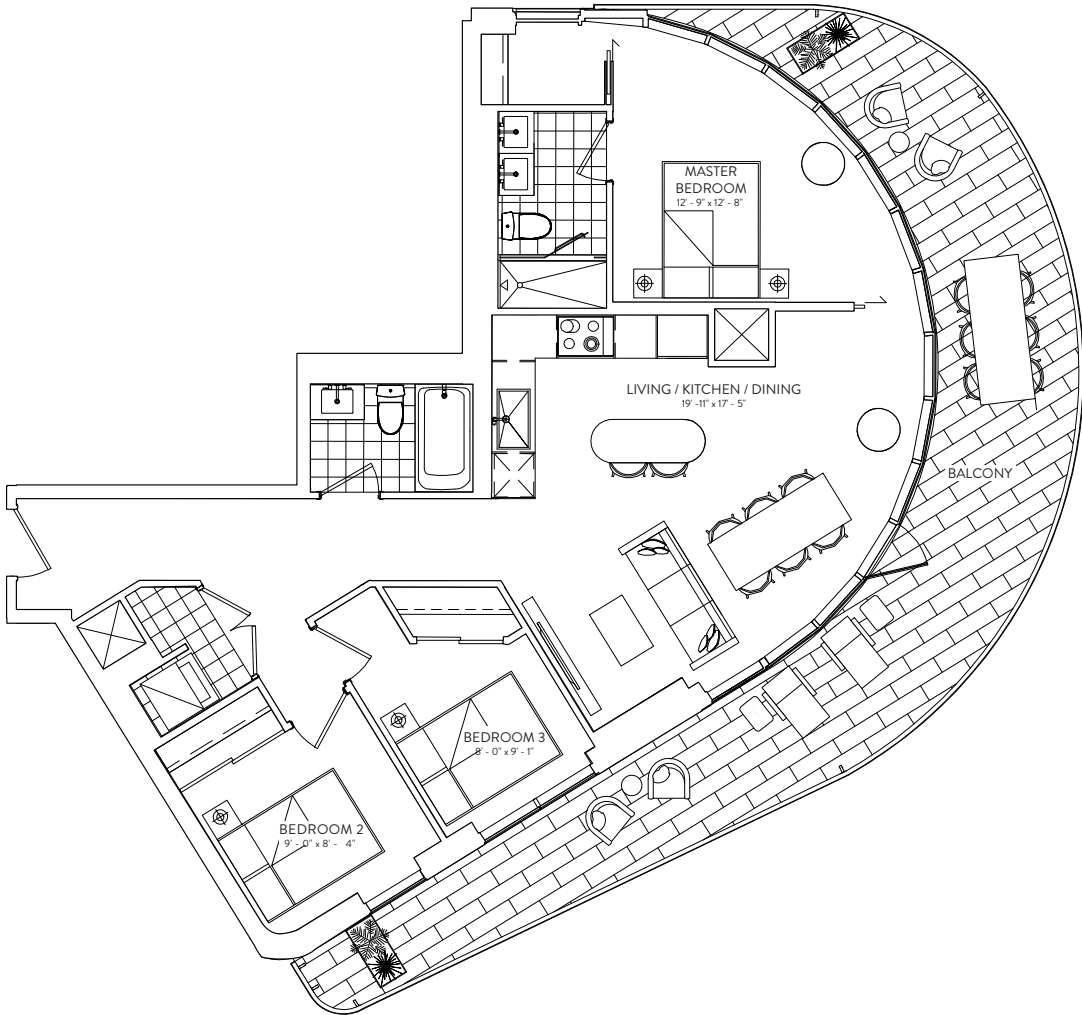
This plan is not to scale and is subject to architectural review and revision. The number of units per level and the number of floors may be reduced or increased at the vendor's sole discretion without notice. The purchaser acknowledges that the actual unit purchased may be a reverse layout to the plan shown. All materials, specifications, details and dimensions, if any, are approximate and subject to change without notice in order to comply with building site conditions and municipal, structural, vendor and/or architectural requirements. Actual living areas may vary from floor area stated. Floor areas have been measured and may vary in accordance with Bulletin #22 published by the Tarion Warranty Corporation. Bulkheads are not shown on this plan and may be located in areas of the Unit as required to provide venting and mechanical systems. Balconies, Terraces and Patios, if any, are exclusive use common elements shown for display purposes only and location and size are subject to change without notice. Window location, size and type may vary without notice. The length, width and directional position of the flooring are for illustration purposes only and may vary without notice. E.&O.E.

3B 994

3 BEDROOM | 2 BATHROOM

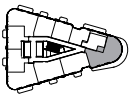
INTERIOR: 994 SF | EXTERIOR: 360 SF

GALLERIA 

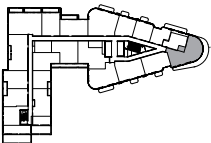


FLOORS 9, 10, 12-27 | EXTERIOR: 360 SF
FLOOR 11 | EXTERIOR: 385 SF

FLOORS 11-27



FLOORS 9-10

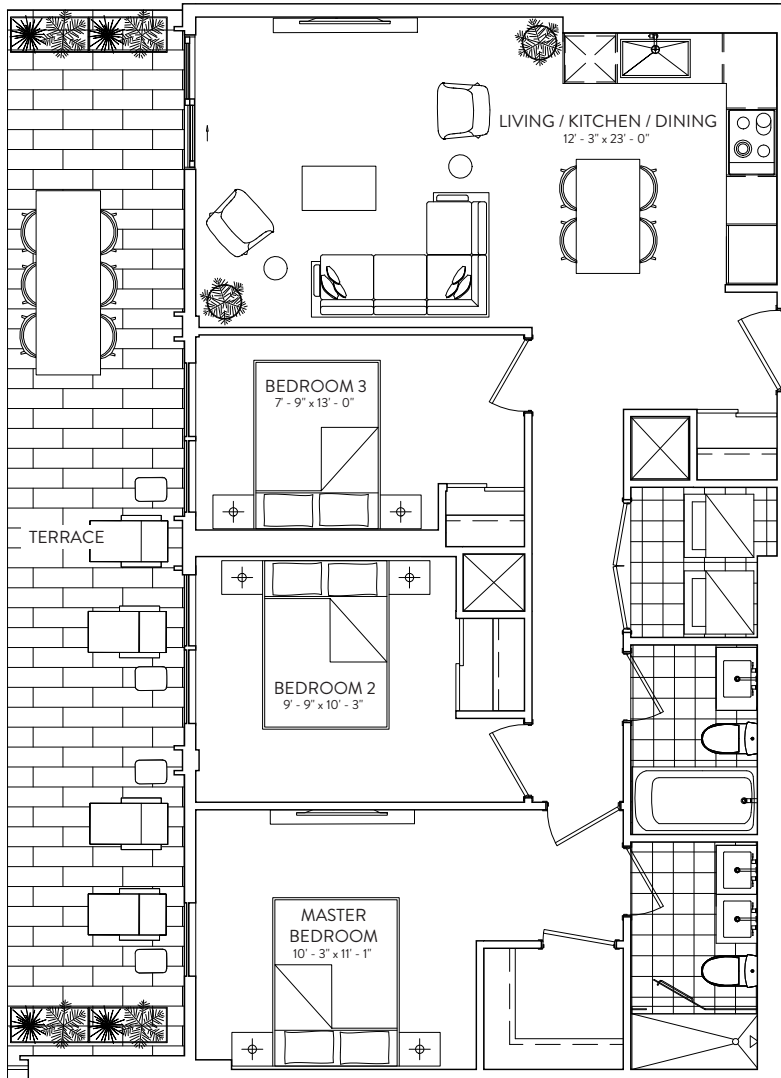


This plan is not to scale and is subject to architectural review and revision. The number of units per Floor and the number of floors may be reduced or increased at the vendor's sole discretion without notice. The purchaser acknowledges that the actual unit purchased may be a reverse layout to the plan shown. All materials, specifications, details and dimensions, if any, are approximate and subject to change without notice in order to comply with building site conditions and municipal, structural, vendor and/or architectural requirements. Actual living areas may vary from floor area stated. Floor areas have been measured and may vary in accordance with Bulletin #22 published by the Tarion Warranty Corporation. Bulkheads are not shown on this plan and may be located in areas of the Unit as required to provide venting and mechanical systems. Balconies, Terraces and Patios, if any, are exclusive use common elements shown for display purposes only and location and size are subject to change without notice. Window location, size and type may vary without notice. The length, width and directional position of the flooring are for illustration purposes only and may vary without notice. E.&O.E.

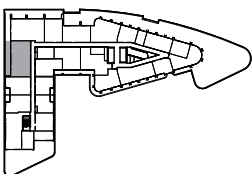
almadev

3B 1018 W

INTERIOR: 1018 SF | EXTERIOR: 269 SF | 3 BEDROOM | 2 BATHROOM



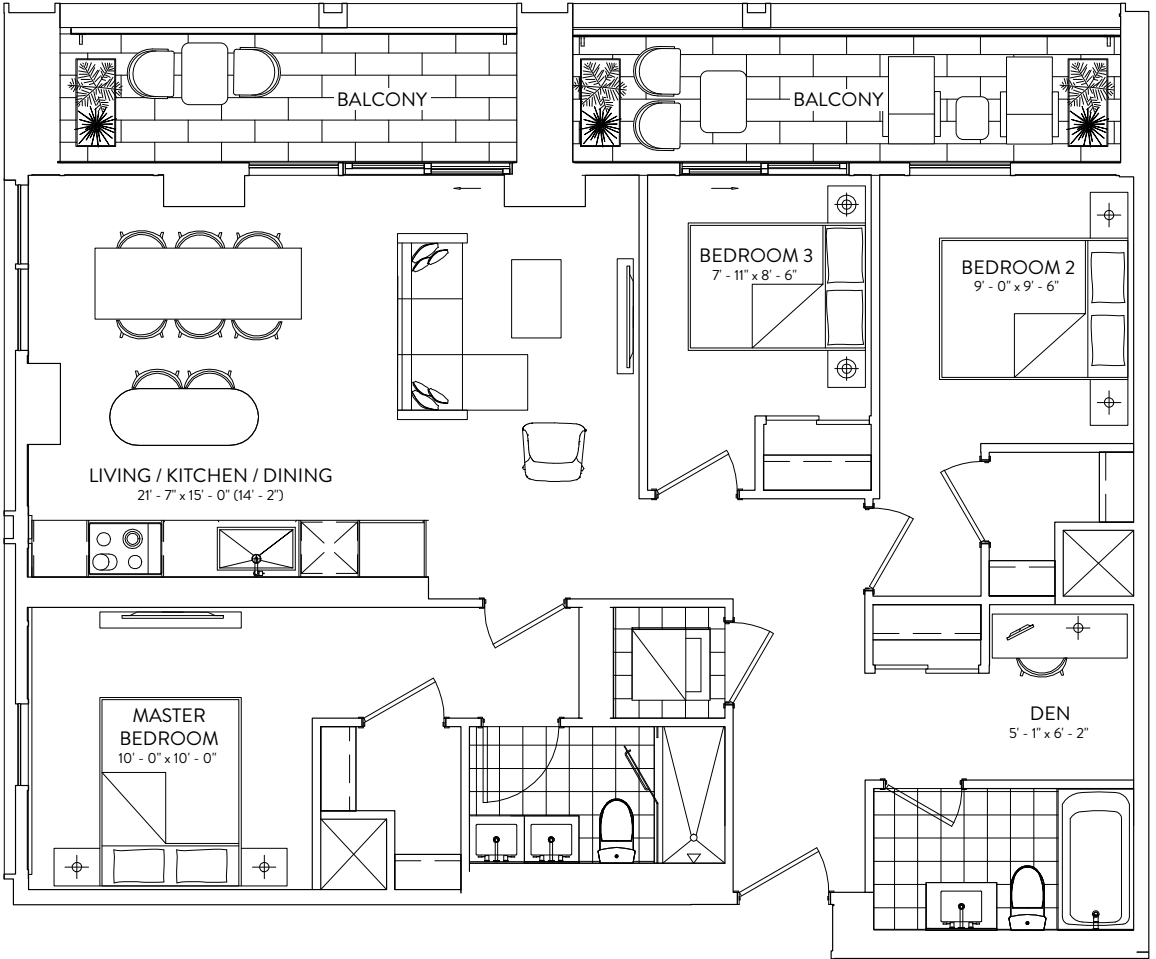
FLOOR 8



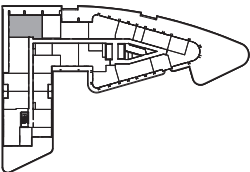
3B+D 1110

3 BEDROOM + DEN | 2 BATHROOM
INTERIOR: 1110 SF | EXTERIOR: 158 SF

GALLERIA 



FLOORS 9-10



This plan is not to scale and is subject to architectural review and revision. The number of units per Floor and the number of floors may be reduced or increased at the vendor's sole discretion without notice. The purchaser acknowledges that the actual unit purchased may be a reverse layout to the plan shown. All materials, specifications, details and dimensions, if any, are approximate and subject to change without notice in order to comply with building site conditions and municipal, structural, vendor and/or architectural requirements. Actual living areas may vary from floor area stated. Floor areas have been measured and may vary in accordance with Bulletin #22 published by the Taroni Warranty Corporation. Bulkheads are not shown on this plan and may be located in areas of the Unit as required to provide venting and mechanical systems. Balconies, Terraces and Patios, if any, are exclusive use common elements shown for display purposes only and location and size are subject to change without notice. Window location, size and type may vary without notice. The length, width and directional position of the flooring are for illustration purposes only and may vary without notice. E.&O.E.

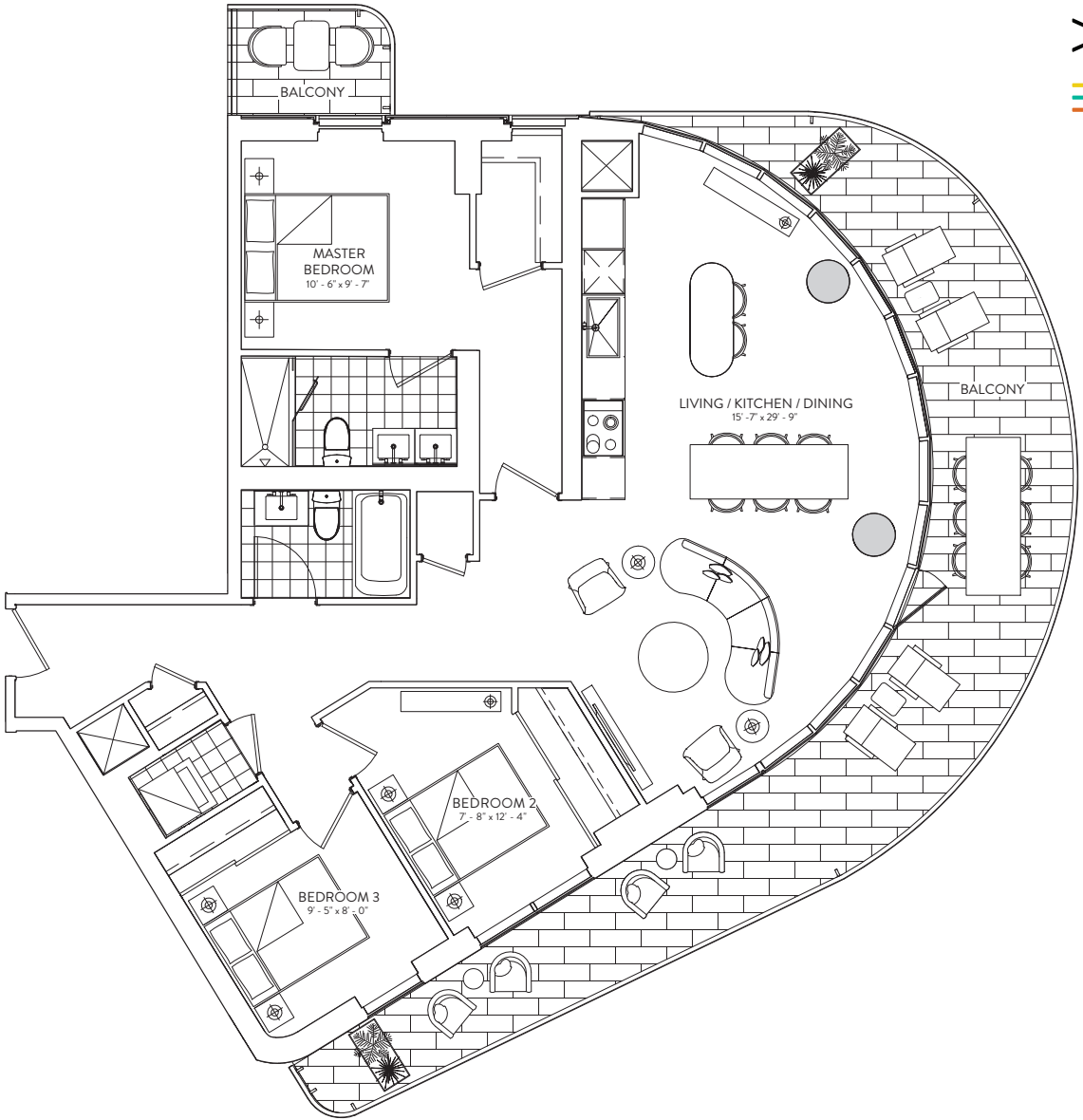
almadev

3B 1184

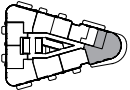
3 BEDROOM | 2 BATHROOM

INTERIOR: 1184 SF | EXTERIOR: 387 SF

GALLERIA 



FLOORS 28-31

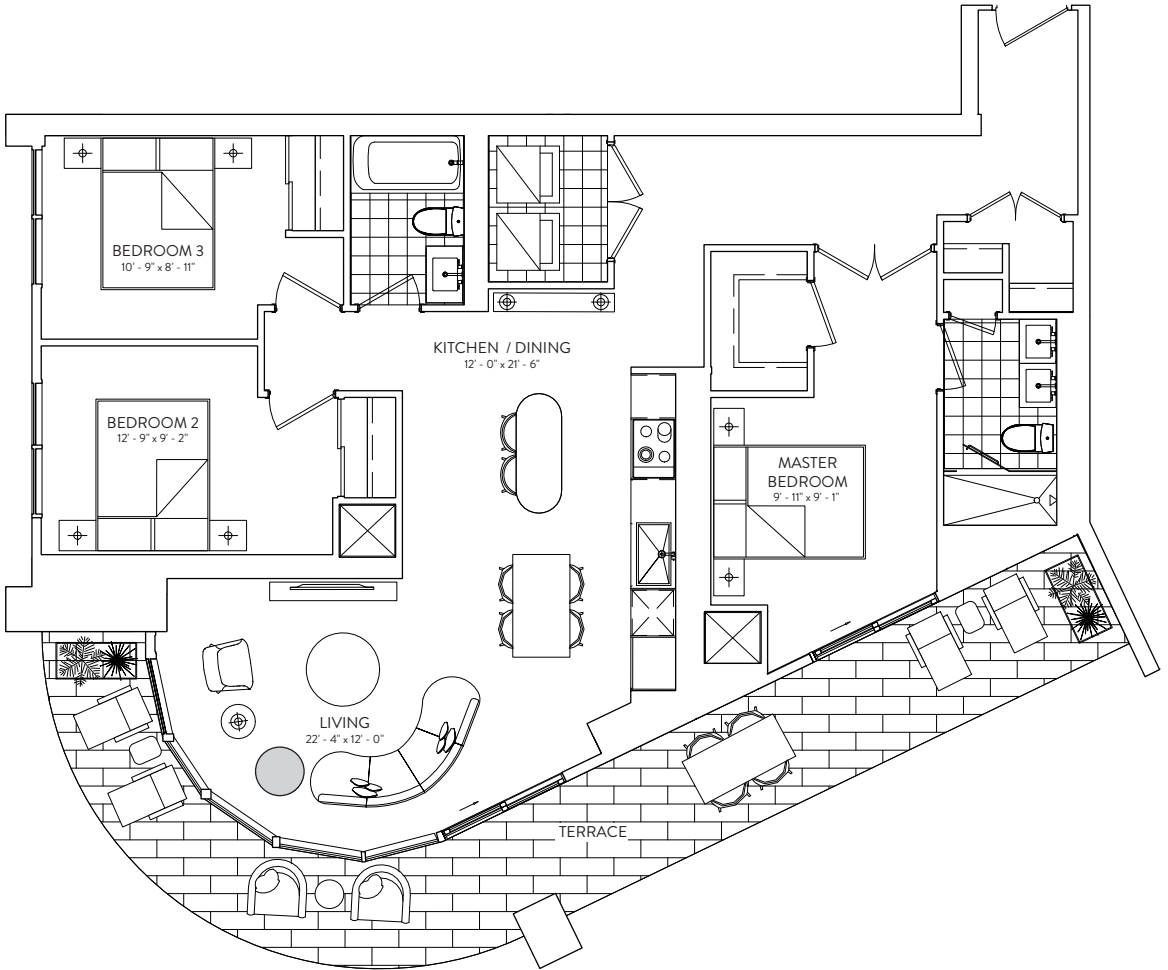


This plan is not to scale and is subject to architectural review and revision. The number of units per Floor and the number of floors may be reduced or increased at the vendor's sole discretion without notice. The purchaser acknowledges that the actual unit purchased may be a reverse layout to the plan shown. All materials, specifications, details and dimensions, if any, are approximate and subject to change without notice in order to comply with building site conditions and municipal, structural, vendor and/or architectural requirements. Actual living areas may vary from floor area stated. Floor areas have been measured and may vary in accordance with Bulletin #22 published by the Taroni Warranty Corporation. Bulkheads are not shown on this plan and may be located in areas of the Unit as required to provide venting and mechanical systems. Balconies, Terraces and Patios, if any, are exclusive use common elements shown for display purposes only and location and size are subject to change without notice. Window location, size and type may vary without notice. The length, width and directional position of the flooring are for illustration purposes only and may vary without notice. E.&O.E.

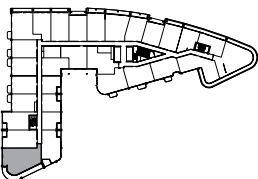
almadev

3B 1250 S

INTERIOR: 1250 SF | EXTERIOR: 270 SF | 3 BEDROOM | 2 BATHROOM



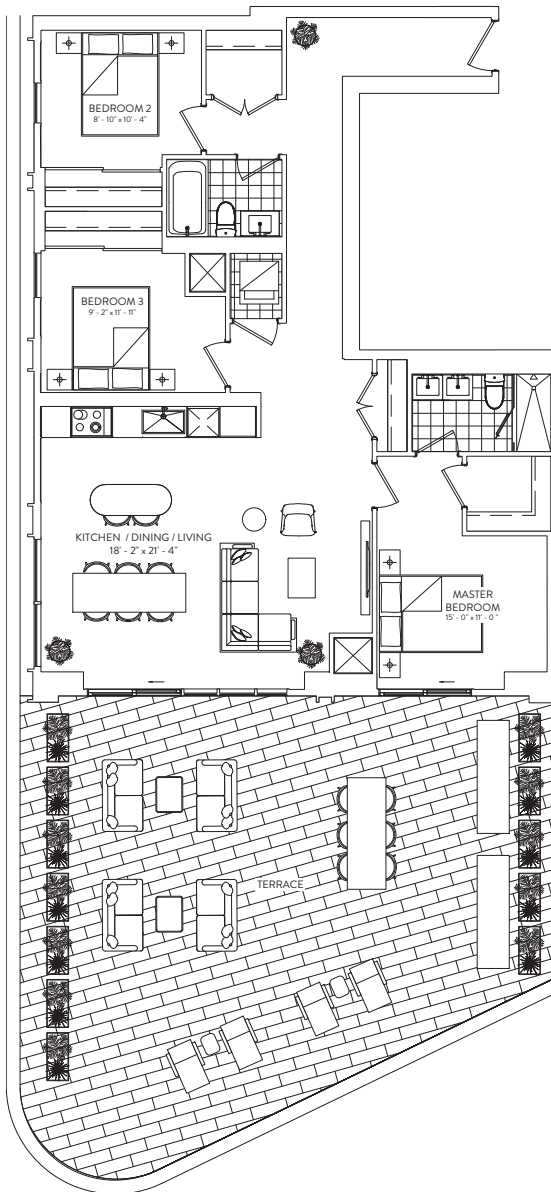
FLOORS 3-4



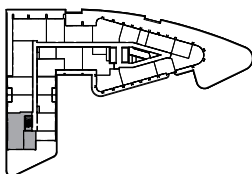
This plan is not to scale and is subject to architectural review and revision. The number of units per level and the number of floors may be reduced or increased at the vendor's sole discretion without notice. The purchaser acknowledges that the actual unit purchased may be a reverse layout to the plan shown. All materials, specifications, details and dimensions, if any, are approximate and subject to change without notice in order to comply with building site conditions and municipal, structural, vendor and/or architectural requirements. Actual living areas may vary from floor area stated. Floor areas have been measured and may vary in accordance with Bulletin #22 published by the Tarion Warranty Corporation. Bulkheads are not shown on this plan and may be located in areas of the Unit as required to provide venting and mechanical systems. Balconies, Terraces and Patios, if any, are exclusive use common elements shown for display purposes only and location and size are subject to change without notice. Window location, size and type may vary without notice. The length, width and directional position of the flooring are for illustration purposes only and may vary without notice. E.&O.E.

3B 1250 W

INTERIOR: 1250 SF | EXTERIOR: 872 SF | 3 BEDROOM | 2 BATHROOM



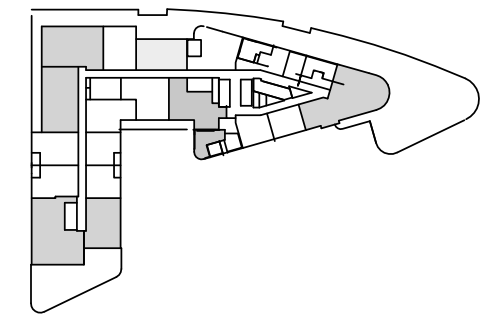
FLOORS 8



This plan is not to scale and is subject to architectural review and revision. The number of units per level and the number of floors may be reduced or increased at the vendor's sole discretion without notice. The purchaser acknowledges that the actual unit purchased may be a reverse layout to the plan shown. All materials, specifications, details and dimensions, if any, are approximate and subject to change without notice in order to comply with building site conditions and municipal, structural, vendor and/or architectural requirements. Actual living areas may vary from floor area stated. Floor areas have been measured and may vary in accordance with Bulletin #22 published by the Tarion Warranty Corporation. Bulkheads are not shown on this plan and may be located in areas of the Unit as required to provide venting and mechanical systems. Balconies, Terraces and Patios, if any, are exclusive use common elements shown for display purposes only and location and size are subject to change without notice. Window location, size and type may vary without notice. The length, width and directional position of the flooring are for illustration purposes only and may vary without notice. E.&O.E.

THE GALLERIA - BLOCK 2

1245 DUPONT STREET, TORONTO,
ONTARIO



LEVEL 8
KEYPLAN

3B-1426-E

UNIT 816

3 BEDROOM

TOTAL INTERIOR SPACE

1426 SF

HARIRI PONTARINI ARCHITECTS

235 Carlaw Avenue
Suite 301
Toronto, Canada M4M 2S1
tel 416 929 4901
fax 416 929 8924
info@hp-arch.com
hariripontarini.com

