

A COMING  
TOGETHER UNLIKE  
ANY OTHER



---

Mile &  
Creek  
PHASE 3





HERE & HOME

HERE

HOME

HERE &

PART CONNECTION & PART CALM.

A place steeped in history & spurring innovation.

Milton is the land of ands, not “if onlys”.

A community comprised of everything you need & even more than you imagined. Close to amenities & tucked away from congestion. Room to grow & a space to call your own. Set against protected greenspace & set eight storeys high above expectation.

With Sixteen Mile Creek rolling through the landscape, Mile & Creek Phase 3 is surrounded by verdant protected greenspace. In the final phase of this master planned condo community, what matters most runs course with what makes a place worth calling your own.

**& THAT'S JUST THE BEGINNING.**



ARTIST'S RENDERING CONCEPT. E&OE.

# MILTON & BEYOND

MILTON  
MILTON



MILTON IS A PLACE UNEQUALED & UNCOMPROMISING.

An area both burgeoning and bespoke, where you can find what you're looking for & find new adventures that elevate your outlook on the everyday. Fifty minutes from Toronto and under a half an hour from Mississauga, Milton places you at the centre of connected living. And, as one of Canada's fastest growing municipalities, Milton is also HQ to one of the nation's fastest growing tech centres\*. Coming soon and just 10 minutes away from Mile & Creek is the Milton Education Village, an innovative hub that integrates people, business, education, healthcare, and recreation through a comprehensive transportation system supporting public transit, vehicles, walking, and cycling\*\*.

Mile & Creek Phase 3 is innovative & within proximity of all you need.

SOURCES:

\*Economic Development, Town of Milton, 2023

\*\*Town of Milton, 2023

# MILTON & BEYOND

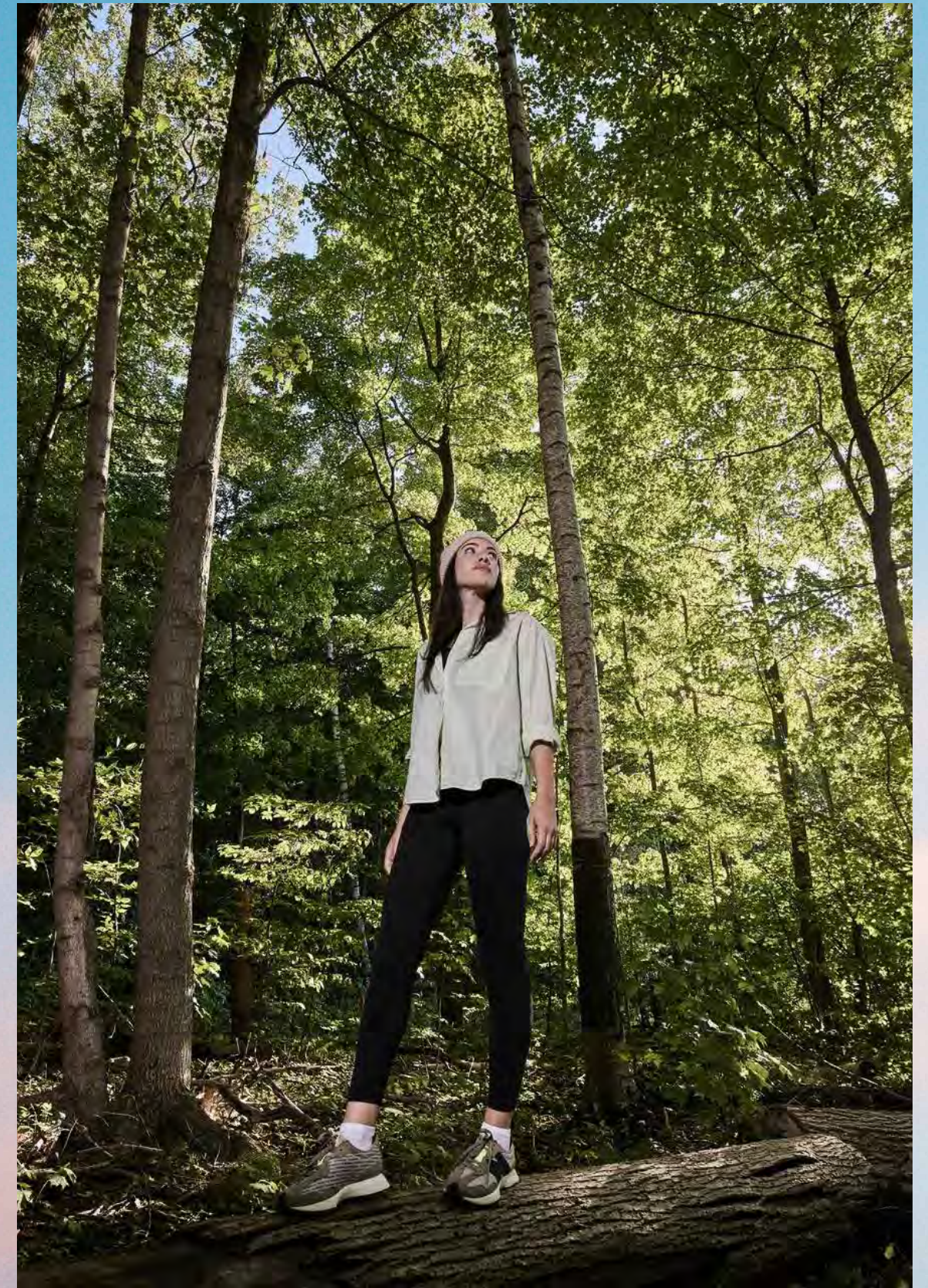
# EXPERIENCE & EXPLORE

Urban conveniences & cultural eateries line Milton's Main Street, with shopping, dining, and entertainment ready for your weekend plans. Just a short drive away are the Toronto Premium Outlets which boast 800,000 sq. ft. of exceptional shopping.

Milton is the ideal terrain for outdoor enthusiasts, connected to a verdant and vibrant mix of some of Ontario's most scenic outdoor spaces.

Right outside, you can explore the many trails that weave itself naturally in the Milton landscape, including Bruce Trail, Canada's oldest and longest marked path system. Or take in the breathtaking vantage points that peak throughout Rattlesnake Point.

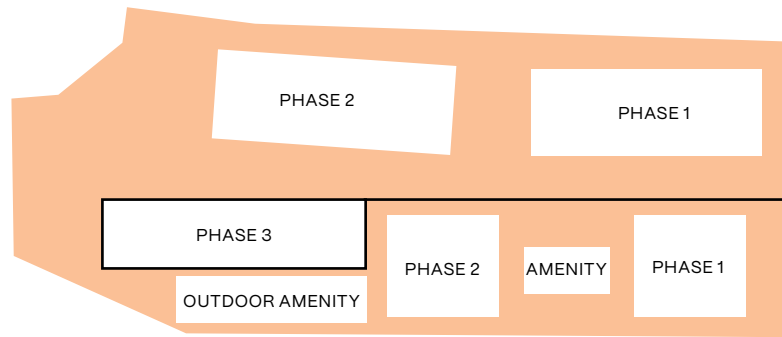
# EXPLORE & EXPERIENCE



Mile & Creek Phase 3 is the final opportunity to live in this coveted mid-rise master planned community. Backing onto protected greenspace & weaved naturally into the broader Milton landscape, see why this community is worth calling home, & then some.

# MILTON

ONE OF THE FASTEST GROWING MUNICIPALITIES IN CANADA\*.



MILE & CREEK CONDO-COMMUNITY IS CONNECTED BY A SERIES OF VERDANT PATHWAYS & BACKING ONTO PROTECTED GREENSPACE.

# 250+

PARKS, FACILITIES, POOLS & FIELDS IN THE MILTON AREA.

# #6

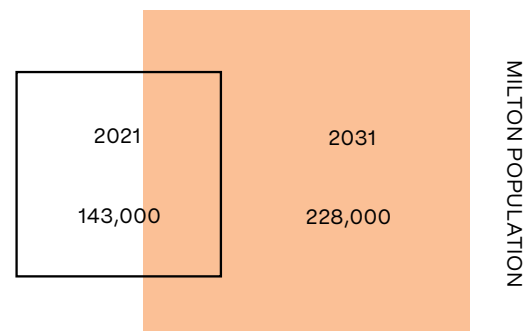
RANKING ON CANADA'S BEST PLACES TO LIVE\*\*.

# 10

MINUTES

- 401 & 407
- MILTON 
- MEV

## GROWTH & POPULATION



# 60%

INCREASE IN POPULATION OVER THE NEXT 10 YEARS.\*\*\*

SOURCES:

\*<https://www.procore.com/jobsite/fastest-growing-cities-in-canada-with-the-most-construction-projects-underway/>

\*\*<https://www.moneysense.ca/canadas-best-places-to-live-2018-full-ranking/> \*\*\*City of Milton. (n.d.). Milton Fast Facts. Milton, Ontario explained. Retrieved from [https://web.archive.org/web/20160427200813/http://www.miltonthiswayup.ca/pdfs/Milton\\_Fast\\_Facts.pdf](https://web.archive.org/web/20160427200813/http://www.miltonthiswayup.ca/pdfs/Milton_Fast_Facts.pdf) Tracking development. Economic Development - Town of Milton. (n.d.). Retrieved from <https://www.milton.ca/en/business-and-development/tracking-development.aspx>



ARTIST'S RENDERING CONCEPT. E&OE.



THE BARN DOOR CAFÉ & STUDIO



CHUDLEIGH'S ENTERTAINMENT FARM



ORANGE SNAIL BREWERS

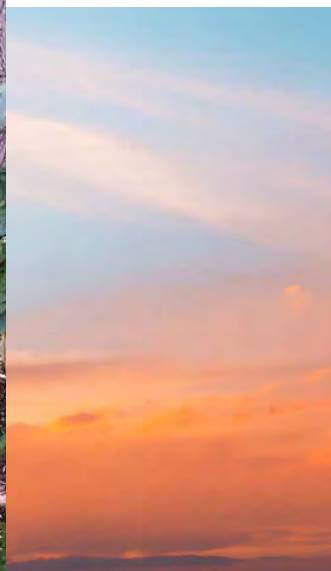


# OUT & ABOUT

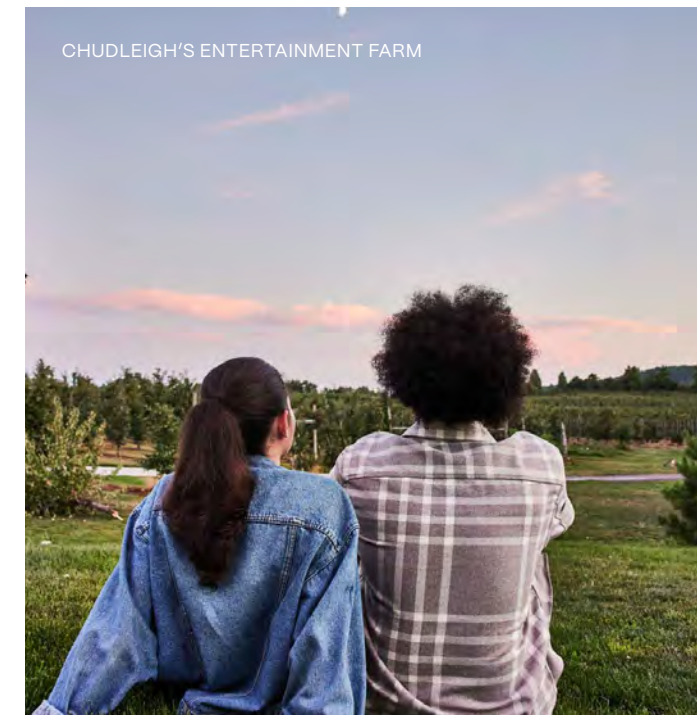
From mornings spent along the Rattlesnake Point trails and afternoons sipping pints at the local brew pub, to evenings making smores and new friends at Chudleigh's Entertainment Farm, Mile & Creek Phase 3 puts you in peak proximity to adventure, amenity & discovery.



LIVINGSTON PARK



CHUDLEIGH'S ENTERTAINMENT FARM



CHUDLEIGH'S ENTERTAINMENT FARM

# HOME & ABOUND

## PARKS & GREENSPACE

1. Kelso Conservation Area
2. Milton Community Sports Park
3. Sunny Mount Park
4. Rattlesnake Point Conservation Area
5. Lowville Park
6. Livingston Park

## DINING & RETAIL

7. Pasqualino Fine Food & Wine
8. Milton Mall Shopping Centre
9. LCBO
10. La Rose Fine Italian Bakery
11. Sobeys
12. Derry Heights Plaza
13. No Frills
14. Locanda
15. Walmart
16. Starbucks
17. Longo's
18. Goodfellas Wood Oven Pizza
19. EddieO's PourHouse & Kitchen
20. Milton Common Shopping Mall
21. The Home Depot
22. RONA+
23. Derry Centre
24. The Bistro on Main
25. The Eighth Note Local Eatery
26. Bryden's Pub & Restaurant
27. Blossom Café
28. The Barn Door Café & Studio
29. Orange Snail Brewers

## EDUCATION

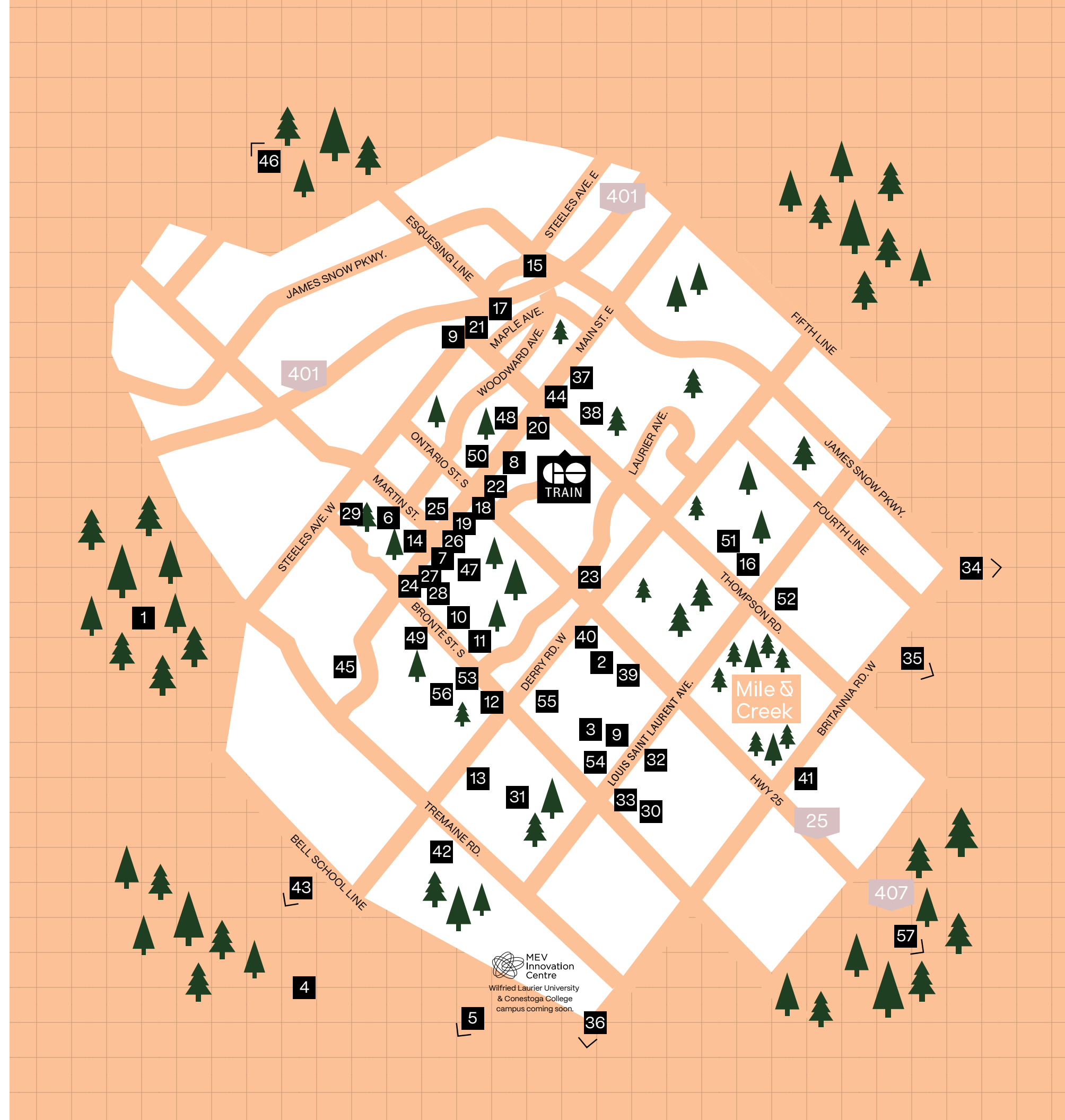
30. St. Scholastica Catholic Elementary School
31. P.L. Roberston Public School
32. Boyne Public School
33. St. Francis Xavier Catholic Secondary School
34. University of Toronto Mississauga
35. Sheridan College Trafalgar Road Campus
36. Mohawk College

## RECREATION

37. Milton Leisure Centre
38. Milton Memorial Arena
39. Milton Tennis Club
40. Milton Sports Centre
41. Rattlesnake Point Golf Club
42. Mattamy National Cycling Centre
43. Springridge Farm
44. FirstOntario Arts Centre Milton
45. Sherwood Community Centre & Library
46. Chudleigh's Entertainment Farm
47. Milton Farmer's Market
48. Modo Yoga Milton
49. F45 Training Milton
50. ONYX FIT

## SERVICES

51. TD Bank
52. Scotiabank
53. CIBC
54. RBC
55. Milton District Hospital
56. Primecare Family Health
57. Oakville Trafalgar Memorial Hospital



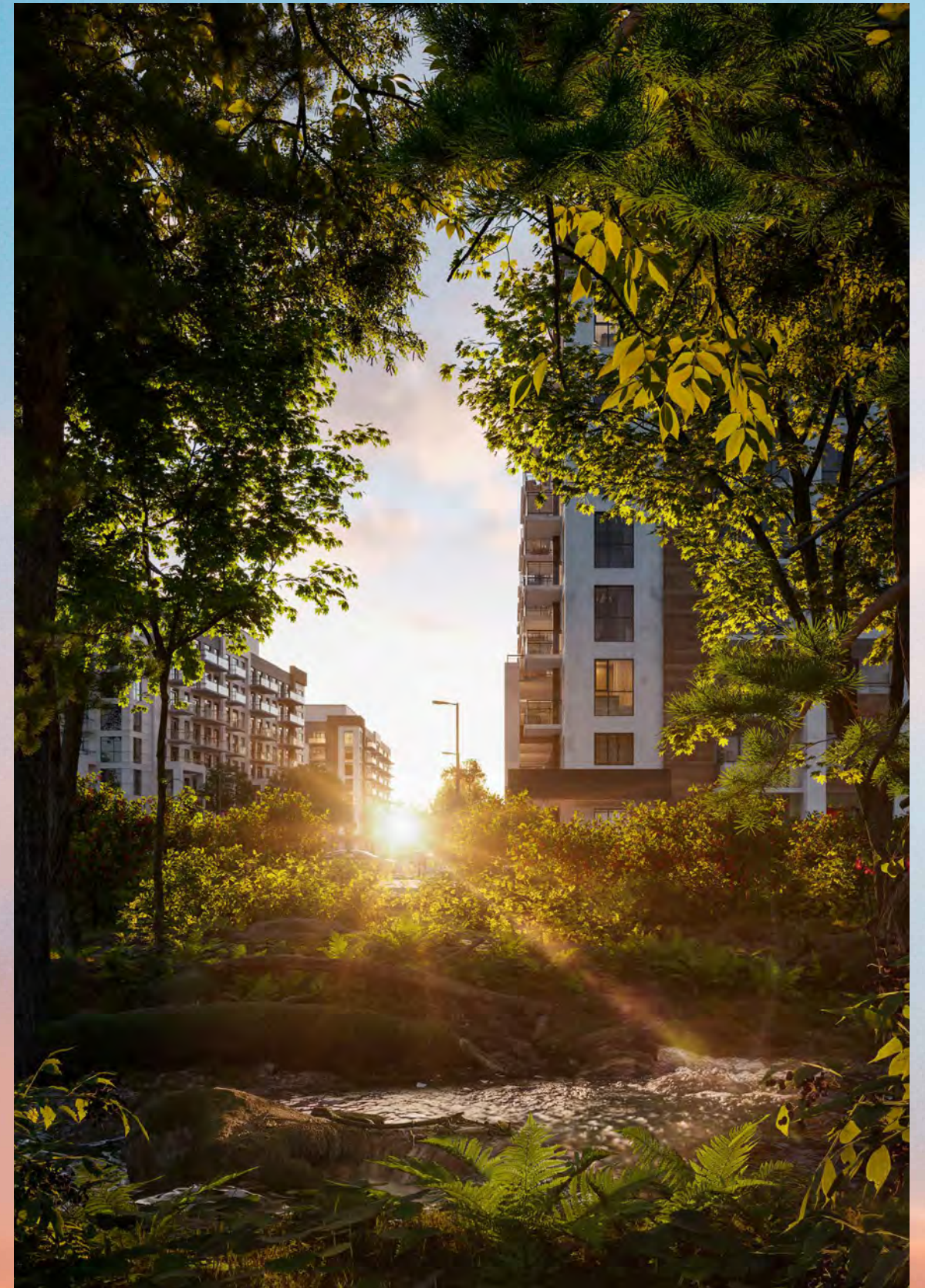


# ESCAPE & EXPLORE

DISCOVER THE NATURAL SURROUNDINGS  
RIGHT OUTSIDE YOUR DOOR.

Nestled against Milton's heritage trail system, Mile & Creek Phase 3 emerges as an idyllic community for outdoor enthusiasts. Embraced by the beauty of Sixteen Mile Creek, residents can enjoy various year-round activities along a 6km trail, including hikes and snowshoe excursions. Amidst the natural splendour, residents can marvel at the Hilton Falls reservoir and find tranquility within a silent cedar grove.

# EXPLORE & ESCAPE



NATURE & AMENITY.

Proximity & peace of mind. Surrounded by all you need & set against a conserved backdrop you could only envision.



ARTIST'S RENDERING CONCEPT. E&OE.



ARTIST'S RENDERING CONCEPT. E&OE.



ARTIST'S RENDERING CONCEPT. E&OE.

# CLUBHOUSE



ARTIST'S RENDERING CONCEPT. E&OE.

NO MEMBERSHIP NEEDED.

Part community centre, part immersive experience, The Clubhouse amenity pavilion is where residents, family & friends can relax & unwind, connect & disconnect, & take in all Mile & Creek Phase 3 has to offer.

Discover 3 floors of amenity-rich spaces, including a media room, co-working space, fitness centre, 24-hour concierge, social lounge, entertainment area, and an expansive rooftop terrace with BBQ's, dining area and fireside lounge overlooking protected greenspace.

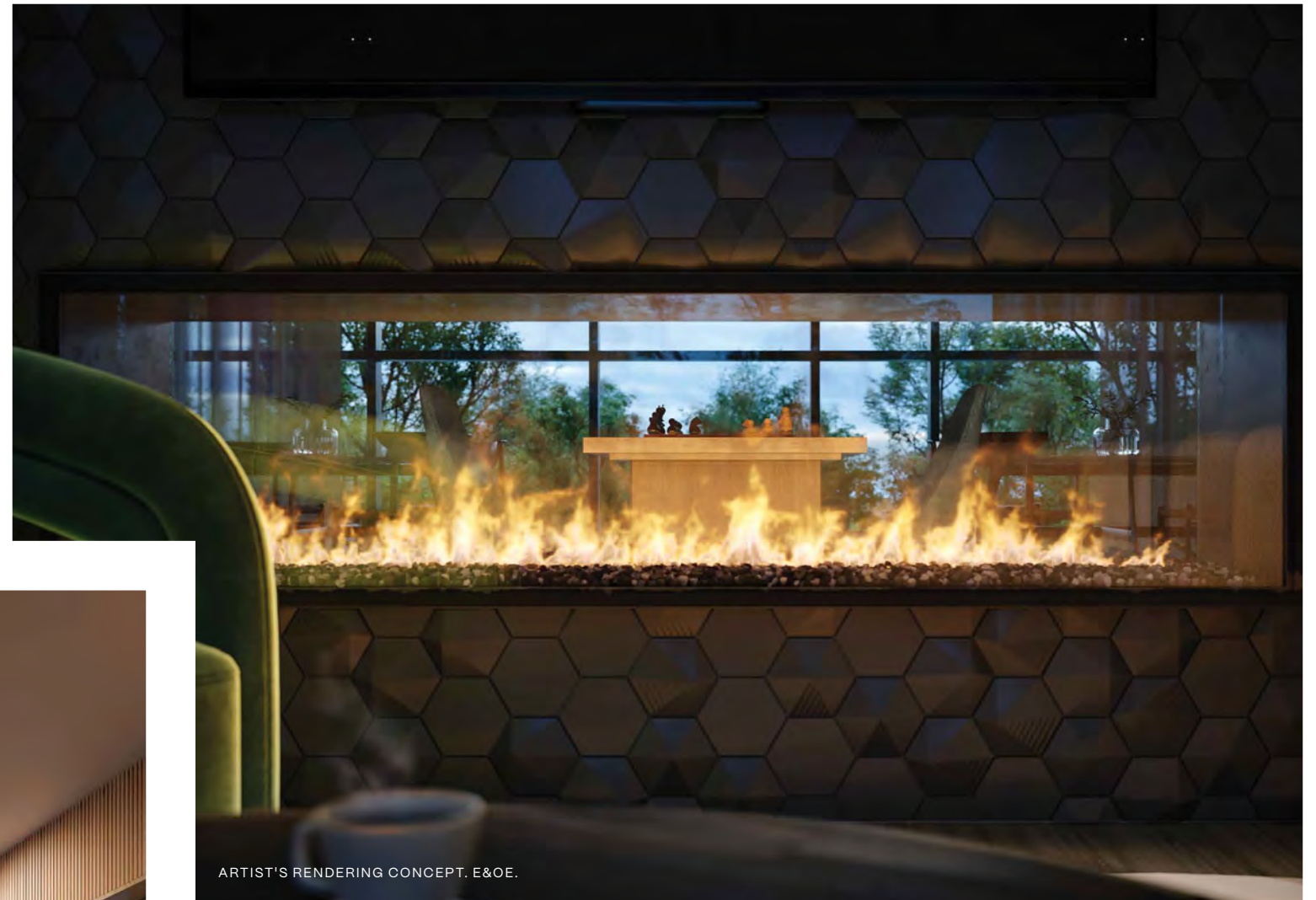
# CLUBHOUSE



ARTIST'S RENDERING CONCEPT, E&OE.

A BALANCE OF FORM & FUNCTION.

Mile & Creek Phase 3 showcases finishes that highlight a sense of harmony, with the layering of wood, metal, glass, and stone along with luxe textiles for a cohesive feel throughout.



Organic shapes and colours are introduced in the wall coverings, artwork, furniture, and decorative lighting fixtures, to add depth, dimension, and interest to every space.



ARTIST'S RENDERING CONCEPT. E&OE.



FROM ABOVE

BEYOND EXPECTATION



SOCIAL LOUNGE



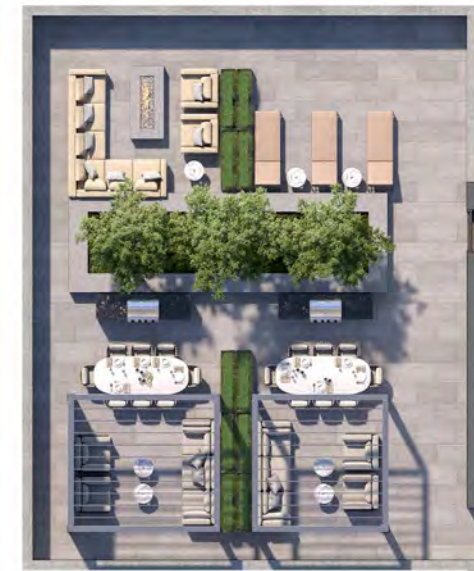
CO-WORKING SPACE



2ND FLOOR

FIRESIDE LOUNGE

SUNDECK



ROOF TOP



ARTIST'S RENDERING CONCEPT. E&OE.

# A PLACE & A FEELING

ALL THAT'S POSSIBLE.

Rising eight-storeys into Milton's verdant and vibrant landscape is the third & final phase of Mile & Creek, a five-building condo-community backing onto protected greenspace and at the forefront of modern living.

Spacious suites have been designed for today's urban dweller, with bright, open spaces, upgraded standard features & finishes, and amenities that add, enhance & elevate every day.

# A PLACE & A FEELING



ARTIST'S RENDERING CONCEPT. E&OE.

WHERE HARMONY & MATERIALITY MERGE.

Discover interiors designed for better living, with floor to ceiling windows, sleek appliances, and contemporary finishes that welcome you in & embrace modernity.



ARTIST'S RENDERING CONCEPT. E&OE.



ARTIST'S RENDERING CONCEPT. E&OE.



ARTIST'S RENDERING CONCEPT. E&OE.



SOLEIL, MILTON

MATTAMY HOMES - MILE & CREEK PHASE 3

### MATTAMY HOMES & WHAT MATTERS MOST.

At Mattamy Homes, we've spent over four decades honing our skills and refining our craft by building in places like Milton. Since our inception, we've had the privilege of building homes for over 125,000 families, while quietly growing our world-class condominium portfolio.

What started as a simple idea to design homes for how you live have made us the largest privately-owned homebuilder in North America, and we truly believe that the best is yet to come.

