

A COMING
TOGETHER UNLIKE
ANY OTHER.



Mile & Creek



A COMING
TOGETHER UNLIKE
ANY OTHER.





SET ROOTS



SET FREE



HERE & HOME

HERE

& HOME

HERE

PART CONNECTION & PART CALM.

A place steeped in history & spurring innovation.
Milton is the land of ands, not “if onlys”.
A community comprised of everything you need & even more than you imagined. Close to amenity & tucked away from congestion. Room to grow & a space to call your own. Set against protected greenspace & set six storeys high above expectation.

With Sixteen Mile Creek rolling through the landscape, with trails and peaks surrounding a dynamic downtown stretch, Mile & Creek is a master planned condo community where what matters most runs course with what makes a place worth calling your own.

& THAT’S JUST THE BEGINNING.



MILTON & BEYOND

MILTON & BEYOND



MILTON IS A PLACE UNEQUALED & UNCOMPROMISING.

An area both burgeoning and bespoke, where you can find what you're looking for & find new adventures that elevate your outlook on the everyday. Fifty minutes from Toronto and under a half an hour from Mississauga, Milton places you at the centre of connected living. And, as one of Canada's fastest growing municipalities, Milton is also HQ to one of the nation's fastest growing tech centres. Innovative & within proximity of all you need.

EXPERIENCE & EXPLORE

Urban conveniences & cultural eateries line the main street, with shopping, dining, & entertainment ready for your weekend plans.

Milton is also the ideal terrain for outdoor enthusiasts, connected to a verdant and vibrant mix of some of Canada's most scenic outdoor spaces.

Explore the many trails that weave itself naturally in the Milton landscape, including Bruce Trail, Canada's oldest and longest marked path system. Or take in the breathtaking vantage points that peak throughout Rattlesnake Point.

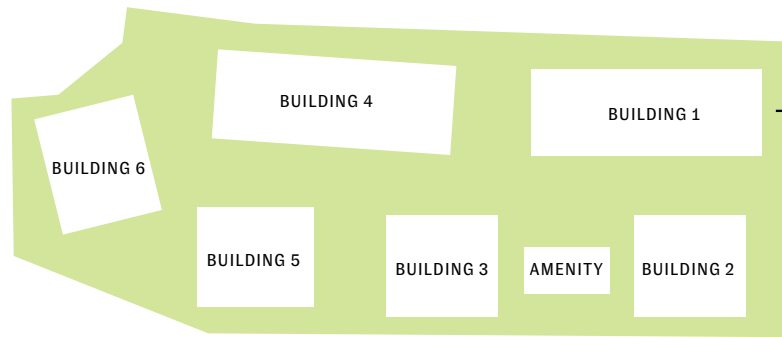
EXPLORE & EXPERIENCE



A six-building master planned condo community, this is your first chance at being part of Mile & Creek. Backing onto protected greenspace & weaved naturally into the broader Milton landscape, see why this community is worth calling home, & then some.

MILTON

ONE OF THE FASTEST GROWING MUNICIPALITIES IN CANADA*.



MILE & CREEK CONDO-COMMUNITY IS CONNECTED BY A SERIES OF VERDANT PATHWAYS & BACKING ONTO PROTECTED GREENSPACE.

250+

PARKS, FACILITIES, POOLS & FIELDS IN THE MILTON AREA.

#6

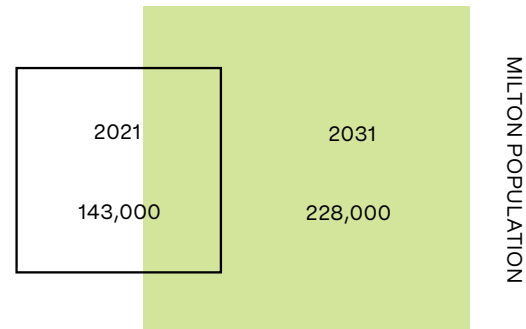
RANKING ON CANADA'S BEST PLACES TO LIVE**.

10

MINUTES



GROWTH & POPULATION



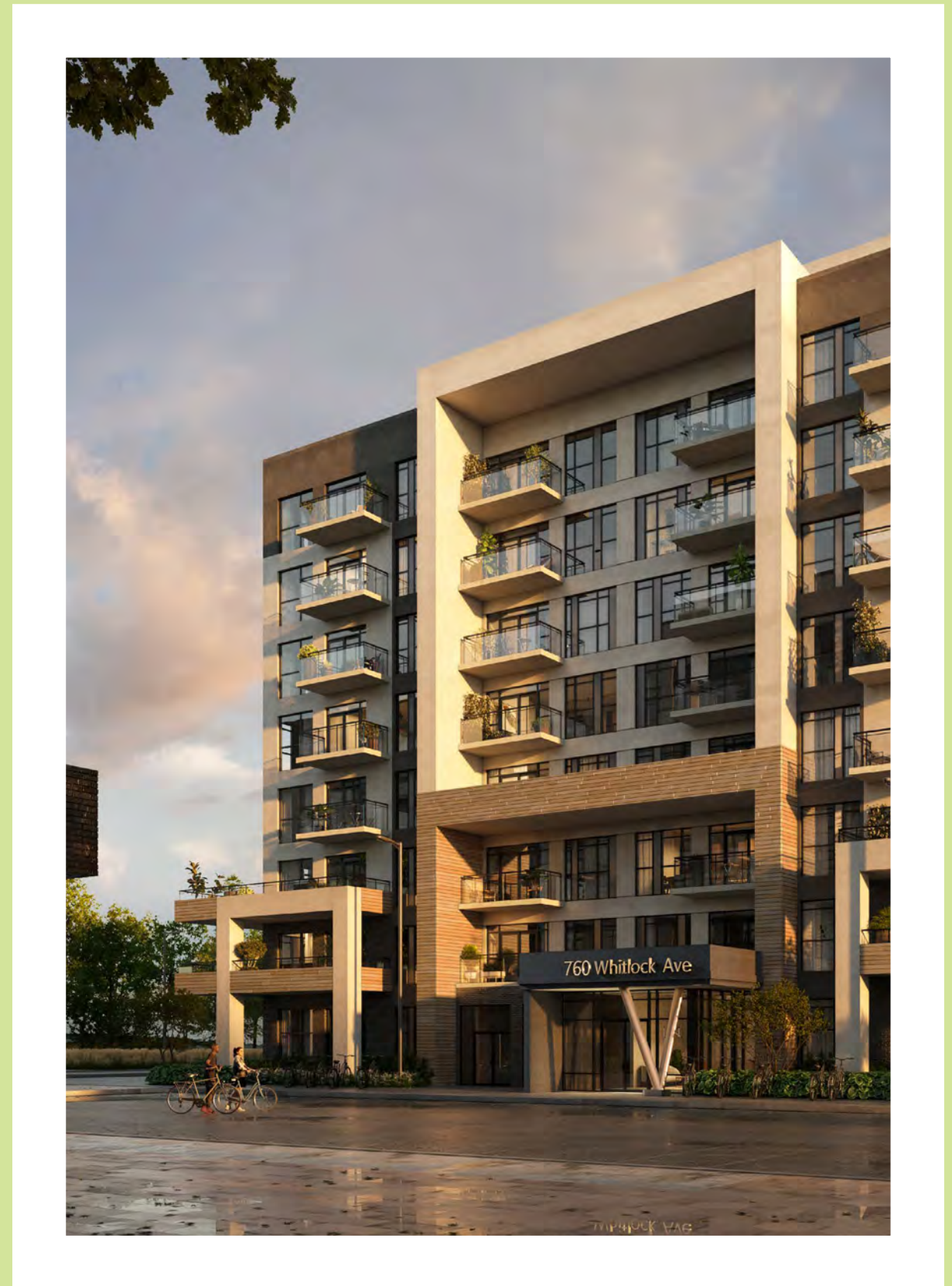
60%

INCREASE IN POPULATION OVER THE NEXT 10 YEARS.***

SOURCES:

*<https://www.procore.com/jobsite/fastest-growing-cities-in-canada-with-the-most-construction-projects-underway/>

<https://www.moneysense.ca/canadas-best-places-to-live-2018-full-ranking/> *City of Milton. (n.d.). Milton Fast Facts. Milton, Ontario explained. Retrieved from https://web.archive.org/web/20160427200813/http://www.miltonthiswayup.ca/pdfs/Milton_Fast_Facts.pdf Tracking development. Economic Development - Town of Milton. (n.d.). Retrieved from <https://www.milton.ca/en/business-and-development/tracking-development.aspx>





CHUDLEIGH'S ENTERTAINMENT FARM



LIVINGSTON PARK



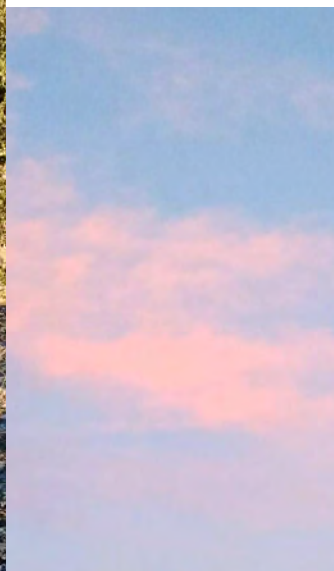
ORANGE SNAIL BREWERS

OUT & ABOUT

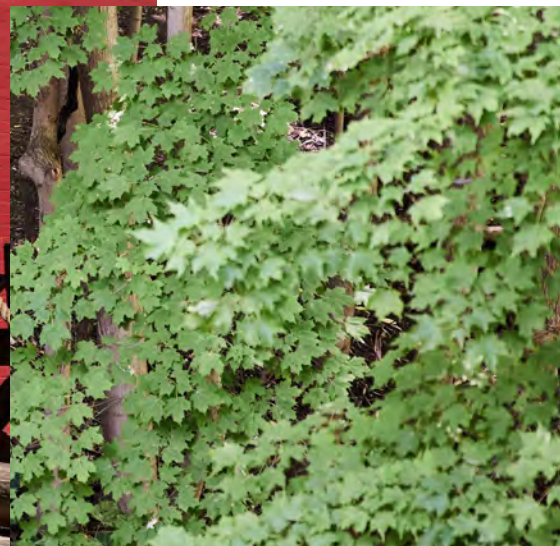
From mornings spent along the Rattlesnake Point trails and afternoons sipping pints at the local brew pub, to evenings making smores and new friends at Chudleigh's Entertainment Farm, Mile & Creek puts you in peak proximity to adventure, amenity & discovery.



KELSO/GLEN EDEN



DOWNTOWN MILTON



THE BARN DOOR CAFÉ & STUDIO

the barn door cafe

HOME & ABOUND

PARKS & GREENSPACE

1. Kelso Conservation Area
2. Milton Community Sports Park
3. Sunny Mount Park
4. Rattlesnake Point Conservation Area
5. Lowville Park
6. Livingston Park

DINING & RETAIL

7. Pasqualino Fine Food & Wine
8. Milton Mall Shopping Centre
9. LCBO
10. La Rose Fine Italian Bakery
11. Sobeys
12. Derry Heights Plaza
13. No Frills
14. Locanda
15. Walmart
16. Starbucks
17. Longo's
18. Goodfellas Wood Oven Pizza
19. EddieO's PourHouse & Kitchen
20. Milton Common Shopping Mall
21. The Home Depot
22. Lowe's
23. Derry Centre
24. The Bistro on Main
25. Pretty Rad
26. Bryden's Pub & Restaurant
27. Blossom Café
28. The Barn Door Café & Studio
29. Orange Snail Brewers

EDUCATION

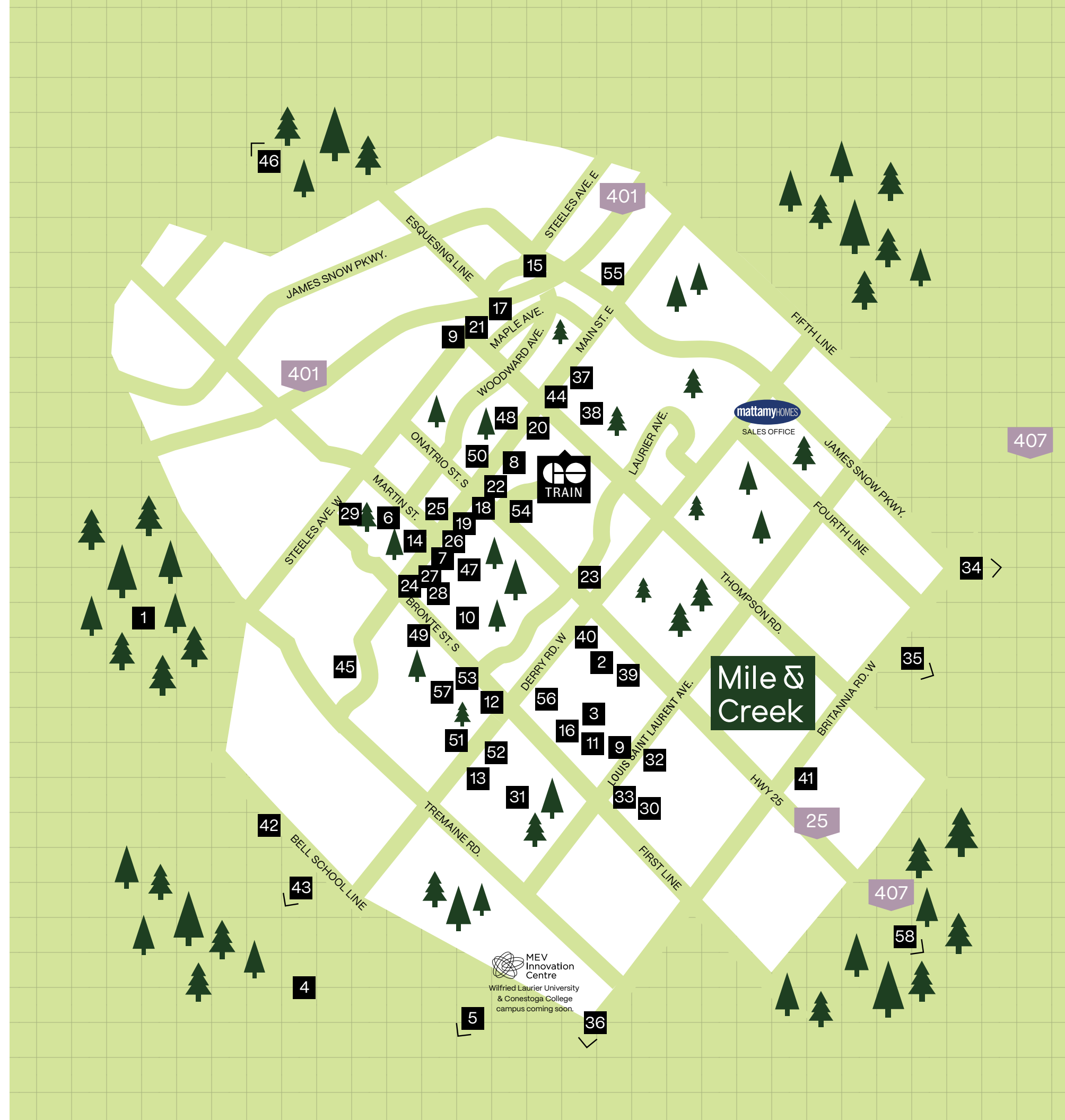
30. St. Scholastica Catholic Elementary School
31. P.L. Roberston Public School
32. Boyne Public School
33. St. Francis Xavier Catholic Secondary School
34. University of Toronto Mississauga
35. Sheridan College Trafalgar Road Campus
36. Mohawk College

RECREATION

37. Milton Leisure Centre
38. Milton Memorial Arena
39. Milton Tennis Club
40. Milton Sports Centre
41. Rattlesnake Point Golf Club
42. Mattamy National Cycling Centre
43. Springridge Farm
44. FirstOntario Arts Centre Milton
45. Sherwood Community Centre & Library
46. Chudleigh's Entertainment Farm
47. Milton Farmer's Market
48. Modo Yoga Milton
49. F45 Training Milton
50. ONYX FIT

SERVICES

51. TD Bank
52. Scotiabank
53. CIBC
54. RBC
55. HSBC
56. Milton District Hospital
57. Primecare Family Health
58. Oakville Trafalgar Memorial Hospital



NATURE & AMENITY.

Proximity & peace of mind. Surrounded by all you need & set against a backdrop you could only envision.

The community's design approach was to create a neutral environment that is layered with character and accentuated with rich hues that connect with the natural backdrop and command attention.

HOUSE

CLUB

HOUSE



NO MEMBERSHIP NEEDED.

Part community centre, part immersive experience, The Clubhouse amenity pavilion is where residents, family & friends can relax & unwind, connect & disconnect, & take in all Mile & Creek has to offer.

Discover 3 floors of amenity-rich spaces, including a media room, co-working space, fitness centre, concierge, social lounge, entertainment area, and an expansive rooftop terrace with BBQ's, dining area and fireside lounge overlooking protected greenspace.



A BALANCE OF FORM & FUNCTION.

Mile & Creek showcases finishes that highlight a sense of harmony, with the layering of wood, metal, glass, and stone along with luxe textiles for a cohesive feel throughout.



Organic shapes and colours are introduced in the wall coverings, artwork, furniture, and decorative lighting fixtures, to add depth, dimension, and interest to every space.



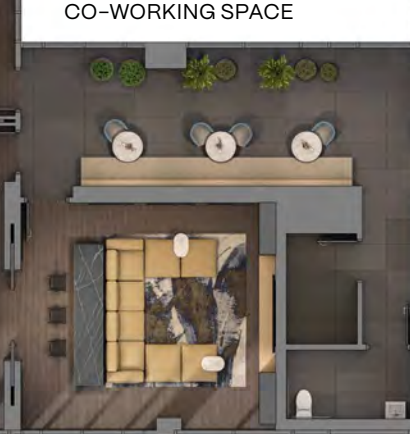
FROM ABOVE & BEYOND EXPECTATION



SOCIAL LOUNGE



CO-WORKING SPACE



DINING/
ENTERTAINMENT
LOUNGE

MEDIA ROOM



2ND FLOOR

FIRESIDE LOUNGE

SUNDECK



OUTDOOR DINING WITH BBQS



KITCHENETTE

ROOF TOP



A PLACE & A FEELING

ALL THAT'S POSSIBLE.

Rising eight-storeys into Milton's verdant and vibrant landscape is the first phase of Mile & Creek, a 6 building condo community backing onto protected greenspace and at the forefront of modern living.

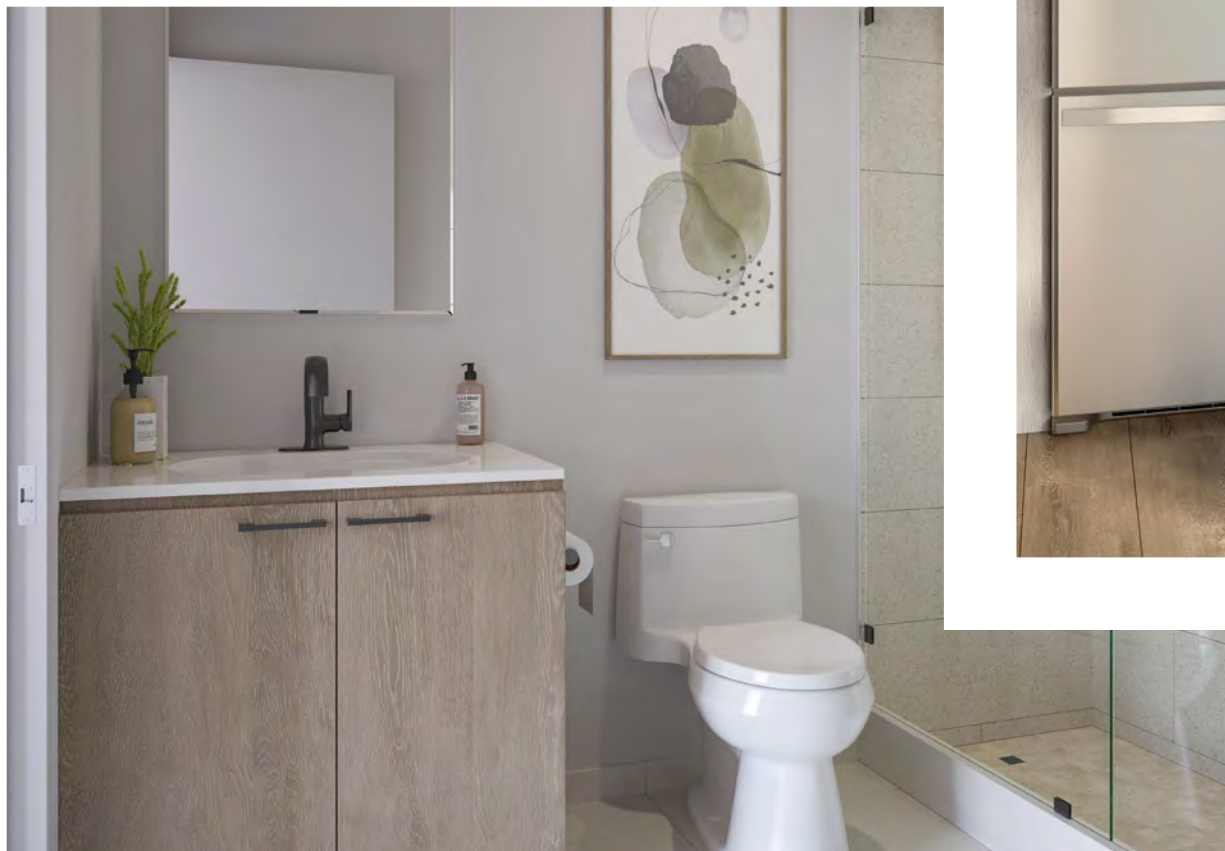
Spacious suites have been designed for today's urban dweller, with bright, open spaces, upgraded standard features & finishes, and amenities that add, enhance & elevate every day.

A PLACE & A FEELING



WHERE HARMONY & MATERIALITY MERGE.

Discover interiors designed for better living, with floor to ceiling windows, sleek appliances, and contemporary finishes that welcome you in & embrace modernity.





*Rendering includes upgrade spec package. Speak to your sales rep for more details.



SOLEIL, MILTON

MATTAMY HOMES - MILE & CREEK



WESTBEND RESIDENCES, TORONTO

MARTHA JAMES CONDOMINIUMS, BURLINGTON

MATTAMY HOMES & WHAT MATTERS MOST.

The company has had the privilege of building homes for over 100,000 families, while quietly growing its world-class condominium portfolio. Now, Mattamy is expanding its focus and increasing its urban presence. It continues to evolve and grow the high-rise multi-family business while continually improving and applying the same customer-first thinking, passion, and attention to detail our homeowners expect from the Mattamy name.

Mattamy Homes builds responsibly, thoughtfully, and innovatively, changing the landscape of condo buildings as you know it. What started as a simple idea to design homes for how you live have made us the largest privately-owned homebuilder in North America, and we truly believe that the best is yet to come.

MATTAMY HOMES - MILE & CREEK

ENVISIONED

ALL YOU



THEN SOME







