

MISSISSAUGA

Village Homes, Dual Front Townhomes & 3-Storey Townhomes



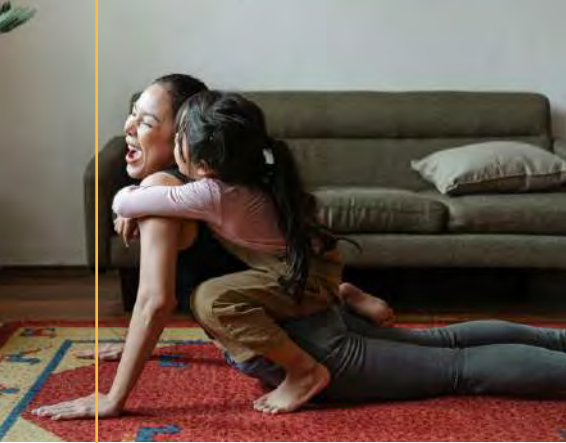
Have it  
*all*



THE NINE



Live *fully*



## We build the world, you make it your own

For 45 years and counting, we've been building for how people truly live, hitting a milestone of over 135,000 homes as the largest family-owned homebuilder in North America.

Unlock the life you want in a home to make your own, a community that inspires you every day and a future that shines bright.

Have it all at The Nine, where you can feel the rhythm of the city, the spirit of community, the comforts of home and everything in perfect flow.

Comforts of *home*





Spirited  
*community*

## Communities that inspire the life you want to live

Our communities are complete living environments, with every detail designed to set the life you want in motion.

Whether you're starting a new chapter or expanding your horizons, The Nine is the ideal community in the right location for you.

- With nearby Erin Mills Town Centre, Meadowvale Town Centre and SmartCentres Mississauga, all your shopping and dining needs are within reach
- A 5-min. drive to Hwy 403 and 401 and only 8 min. to Lisgar GO Station, with free parking for a seamless commute
- Be in walking distance of Osprey Public School, with over a dozen more nearby schools
- Enjoy the outdoors across the street at Cordingley Park and Osprey Marsh, with trails, a pond, park and playground
- Find recreation at nearby Churchill Meadows Community Centre and Mattamy Sports Park, offering everything from pools to sports fields
- Experience the local culture with festivals like the Streetsville Founders' Bread and Honey Festival and Ribfest Mississauga
- Live in a city consistently ranked one of Canada's top locations for business and investment

# We have the perfect home for you

From your first home to your forever home to your anywhere-in-between, we build for a world that's all yours.

At The Nine, your home options include:

- Village Homes
- Dual Front Townhomes
- 3-Storey Townhomes

Find the Townhome that fits you with your choice of floorplans and Design Studio finishes.



In your  
*vision*

# Better *living*

---



## Building homes that make your life better

Our homes are crafted to inspire healthier lifestyles by balancing comfort with energy-efficient design. Each choice you make in your home can lead to a bigger impact – for your well-being and the world. Embrace sustainable living with us, where every day is an opportunity to thrive and make a difference.

Enrich daily life with our ENERGY STAR® certified\* Townhomes at The Nine, crafted for efficiency and to provide optimal comfort for you and your family.† Choosing an ENERGY STAR® home means embracing top-tier energy performance, high-quality construction and a reduced environmental impact, all while enjoying lower utility costs and a more tranquil home life.‡

\*According to the ENERGY STAR® efficiency standard developed by Natural Resources Canada.

†As compared to a minimum Ontario/National Building Code Home.

THE NINE

VILLAGE HOMES

*The Aldgate End*

1,343 sq. ft.

Traditional (TA)

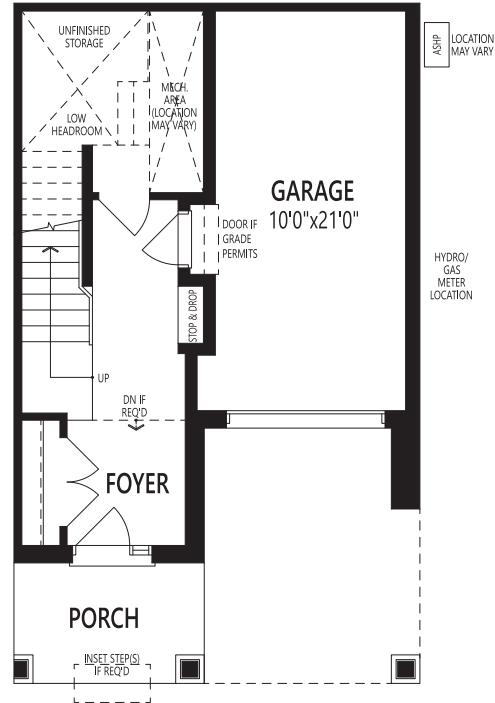


French Manor (FM)

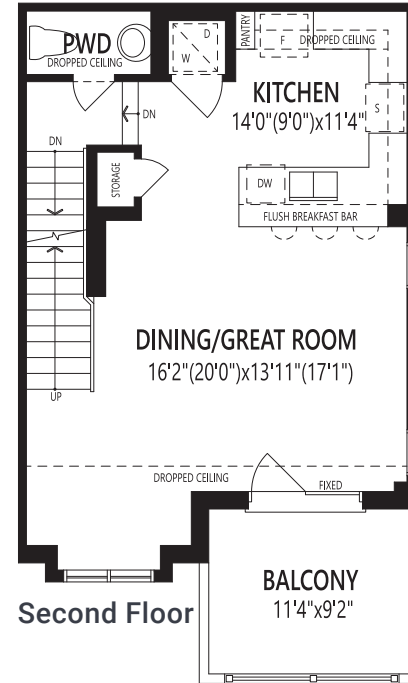


*The Aldgate End*

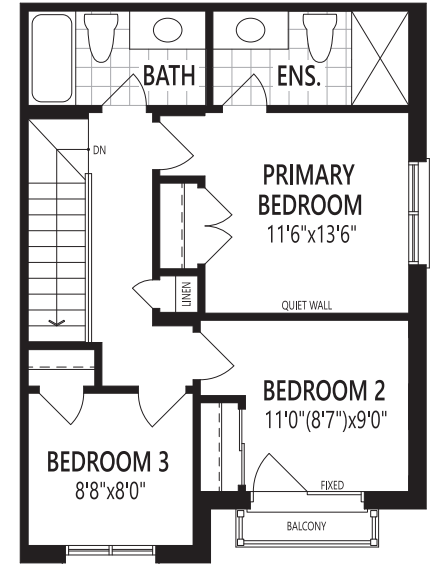
1,343 sq. ft.



Ground Floor



Second Floor



Third Floor

HVHB All illustrations are artist's concept. Specifications, terms and conditions are subject to change without notice. These floor plans and room dimensions apply to elevation 'Traditional' of this model type. Note: Actual usable floor space may vary from the stated floor area. Plans and room dimensions may vary according to elevation. Plan may be built as the mirror image. "Quiet wall" (where shown) means a wall in which additional insulation has been installed. This will assist in reducing, but not eliminating, ambient sound from adjoining rooms and mechanical systems. The extent of the reduction will vary depending upon various factors including, without limitation, the presence and extent of mechanical systems located in the wall. Please consult your sales representative. E.&O.E. July 2025 - Copyright 2025 - Mattamy Homes Limited.

THE NINE

VILLAGE HOMES

*The Brixton*

1,442 sq. ft.

Traditional (TA)



French Manor (FM)

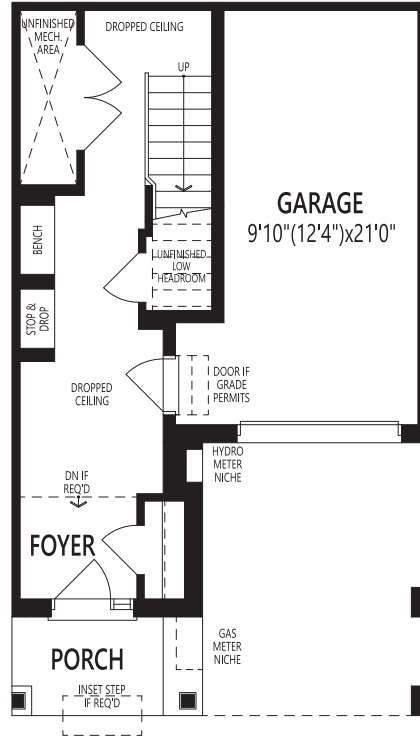


Modern (MO)

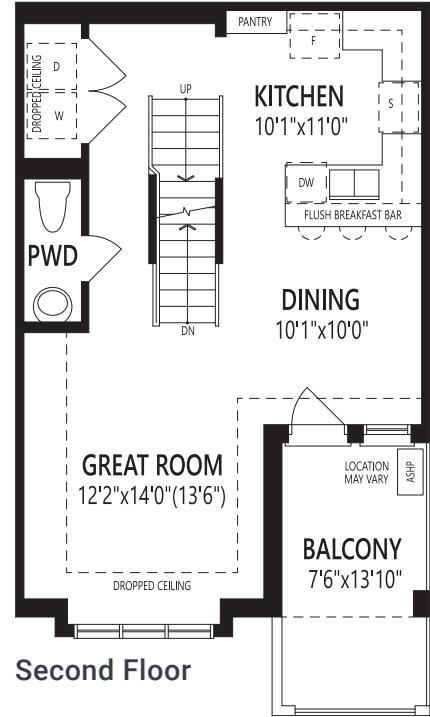


*The Brixton*

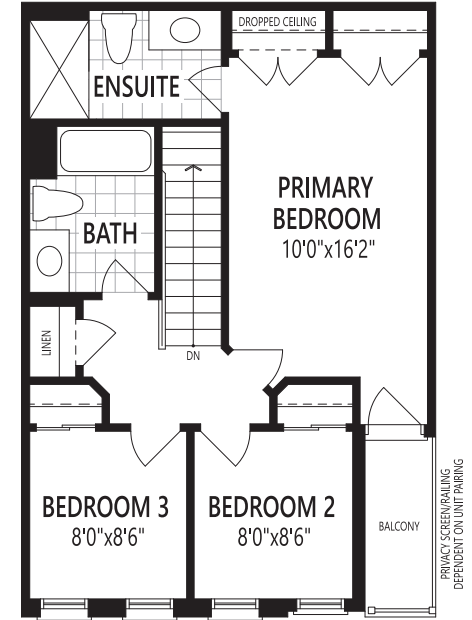
1,442 sq. ft.



Ground Floor



Second Floor



Third Floor

HVHC All illustrations are artist's concept. Specifications, terms and conditions are subject to change without notice. These floor plans and room dimensions apply to elevation 'Traditional' of this model type. Note: Actual usable floor space may vary from the stated floor area. Plans and room dimensions may vary according to elevation. Plan may be built as the mirror image. "Quiet wall" (where shown) means a wall in which additional insulation has been installed. This will assist in reducing, but not eliminating, ambient sound from adjoining rooms and mechanical systems. The extent of the reduction will vary depending upon various factors including, without limitation, the presence and extent of mechanical systems located in the wall. Please consult your sales representative. E.&O.E. July 2025 - Copyright 2025 - Mattamy Homes Limited.

THE NINE

VILLAGE HOMES

*The Brondesbury  
Corner*

1,607 sq. ft.

Modern (MO)

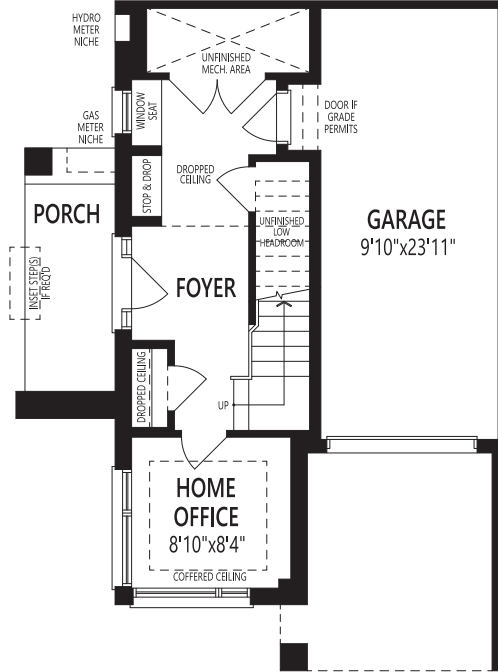


Traditional (TA)

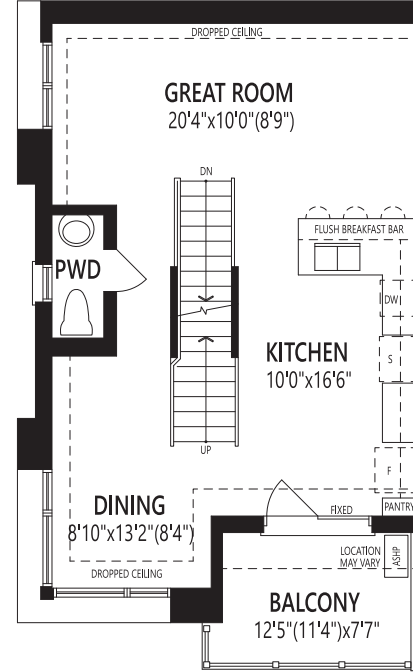


*The Brondesbury Corner*

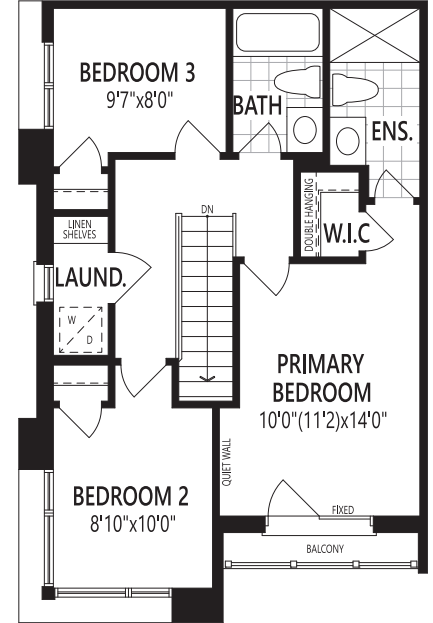
1,607 sq. ft.



Ground Floor



Second Floor



Third Floor

HVHD All illustrations are artist's concept. Specifications, terms and conditions are subject to change without notice. These floor plans and room dimensions apply to elevation 'Modern' of this model type. Note: Actual usable floor space may vary from the stated floor area. Plans and room dimensions may vary according to elevation. Plan may be built as the mirror image. "Quiet wall" (where shown) means a wall in which additional insulation has been installed. This will assist in reducing, but not eliminating, ambient sound from adjoining rooms and mechanical systems. The extent of the reduction will vary depending upon various factors including, without limitation, the presence and extent of mechanical systems located in the wall. Please consult your sales representative. E.&O.E. July 2025 - Copyright 2025 - Mattamy Homes Limited.

THE NINE

French Manor (FM)

VILLAGE HOMES

*The Richmond End*

1,634 sq. ft.



Modern (MO)

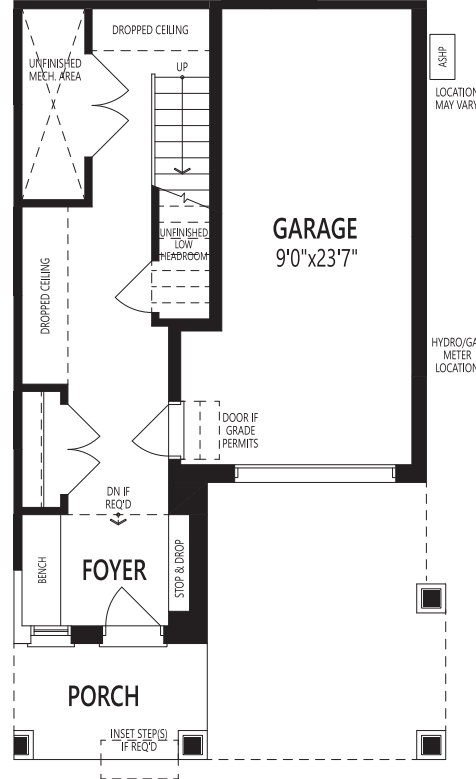


Traditional (TA)

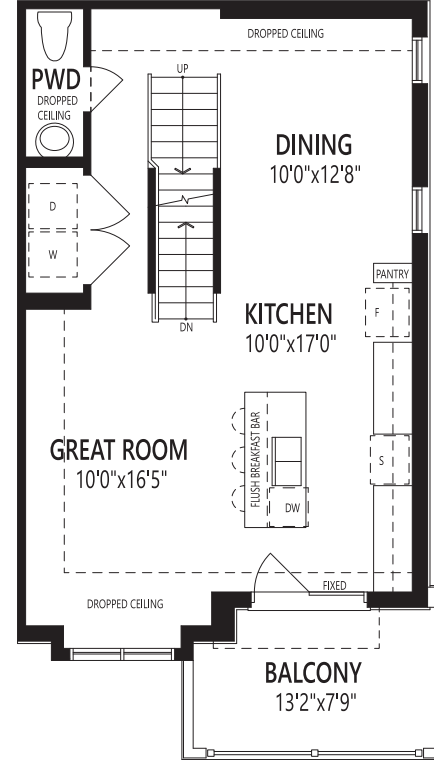


*The Richmond End*

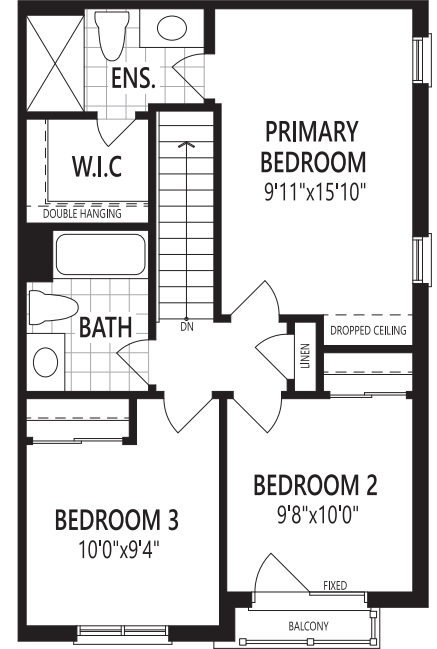
1,634 sq. ft.



Ground Floor



Second Floor



Third Floor

HVHF All illustrations are artist's concept. Specifications, terms and conditions are subject to change without notice. These floor plans and room dimensions apply to elevation 'French Manor' of this model type. Note: Actual usable floor space may vary from the stated floor area. Plans and room dimensions may vary according to elevation. Plan may be built as the mirror image. "Quiet wall" (where shown) means a wall in which additional insulation has been installed. This will assist in reducing, but not eliminating, ambient sound from adjoining rooms and mechanical systems. The extent of the reduction will vary depending upon various factors including, without limitation, the presence and extent of mechanical systems located in the wall. Please consult your sales representative. E.&O.E. July 2025 - Copyright 2025 - Mattamy Homes Limited.

THE NINE

French Manor (FM)

DUAL FRONT TOWNHOME

*The Highgate*

2,016 sq. ft.



Modern (MO)

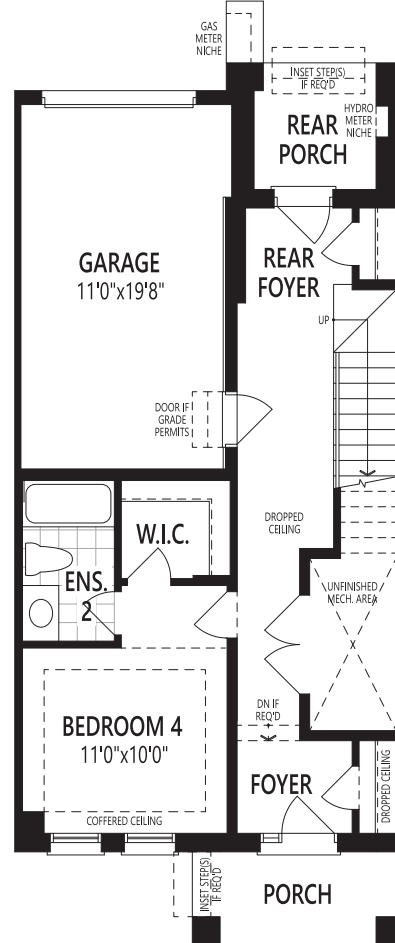


Traditional (TA)

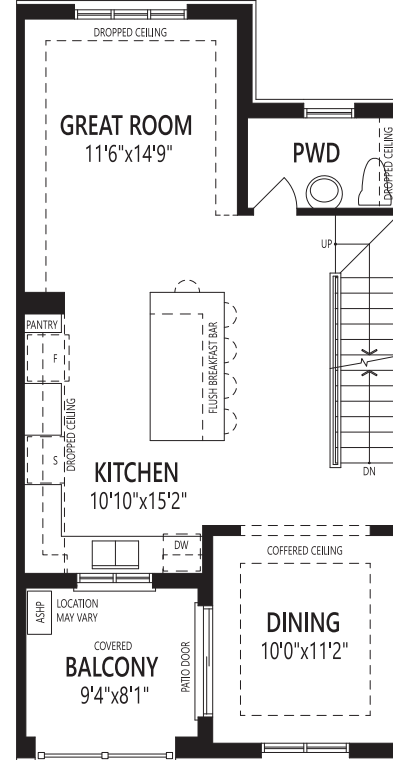


DUAL FRONT TOWNHOME

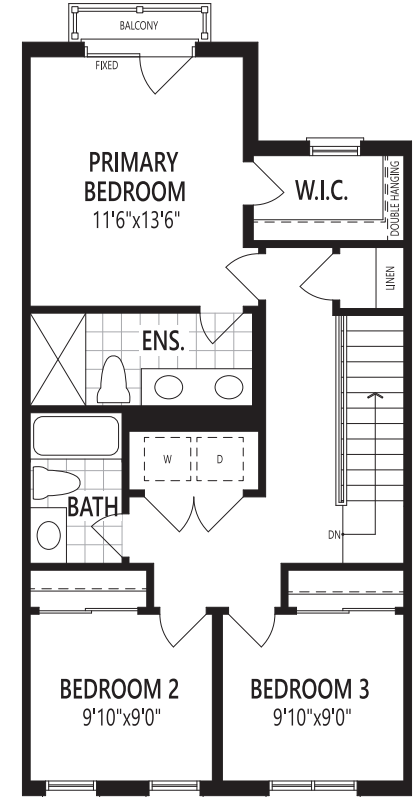
*The Highgate*  
**2,016** sq. ft.



Ground Floor



Second Floor



Third Floor

CDFA All illustrations are artist's concept. Specifications, terms and conditions are subject to change without notice. These floor plans and room dimensions apply to elevation 'French Manor' of this model type. Note: Actual usable floor space may vary from the stated floor area. Plans and room dimensions may vary according to elevation. Plan may be built as the mirror image. "Quiet wall" (where shown) means a wall in which additional insulation has been installed. This will assist in reducing, but not eliminating, ambient sound from adjoining rooms and mechanical systems. The extent of the reduction will vary depending upon various factors including, without limitation, the presence and extent of mechanical systems located in the wall. Please consult your sales representative. E.&O.E. August 2025 - Copyright 2025 - Mattamy Homes Limited.

THE NINE

Modern (MO)

DUAL FRONT TOWNHOME

*The Holloway End*

2,051 sq. ft.



French Manor (FM)



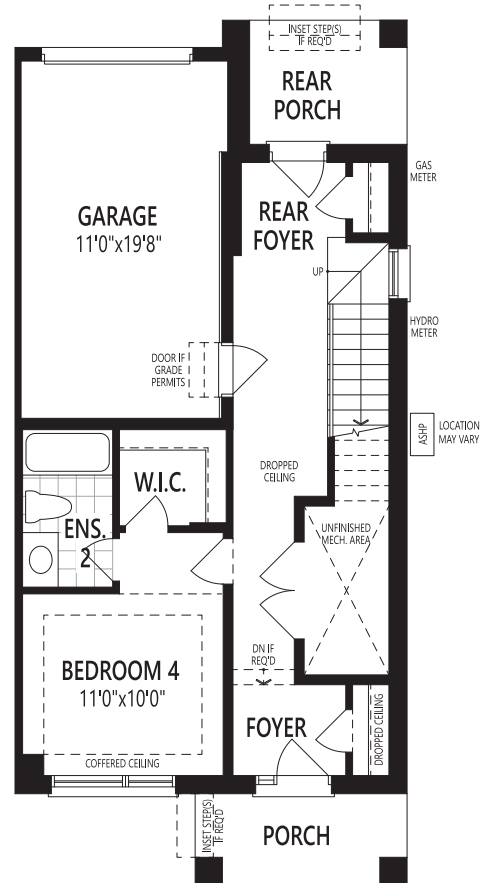
Traditional (TA)



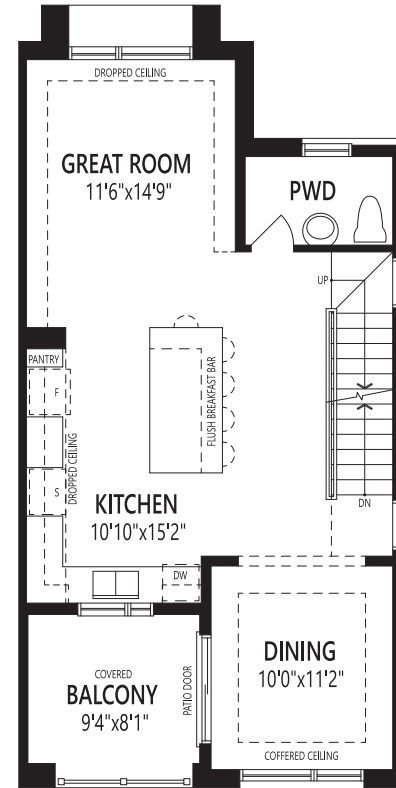
DUAL FRONT TOWNHOME

*The Holloway End*

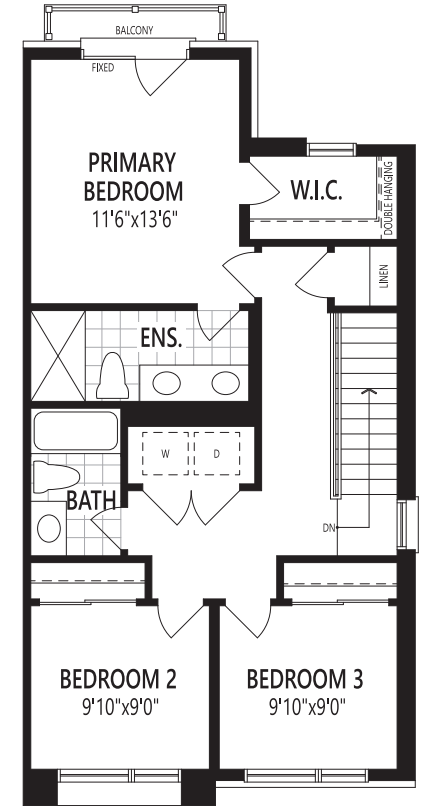
2,051 sq. ft.



Ground Floor



Second Floor



Third Floor

CDFB All illustrations are artist's concept. Specifications, terms and conditions are subject to change without notice. These floor plans and room dimensions apply to elevation 'Modern' of this model type. Note: Actual usable floor space may vary from the stated floor area. Plans and room dimensions may vary according to elevation. Plan may be built as the mirror image. "Quiet wall" (where shown) means a wall in which additional insulation has been installed. This will assist in reducing, but not eliminating, ambient sound from adjoining rooms and mechanical systems. The extent of the reduction will vary depending upon various factors including, without limitation, the presence and extent of mechanical systems located in the wall. Please consult your sales representative. E.&O.E. August 2025 - Copyright 2025 - Mattamy Homes Limited.

THE NINE

French Manor (FM)

DUAL FRONT TOWNHOME

*The  
Clarence*

**2,132** sq. ft.

(Incl. 25 sq. ft. Open to Below)



Modern (MO)



Traditional (TA)

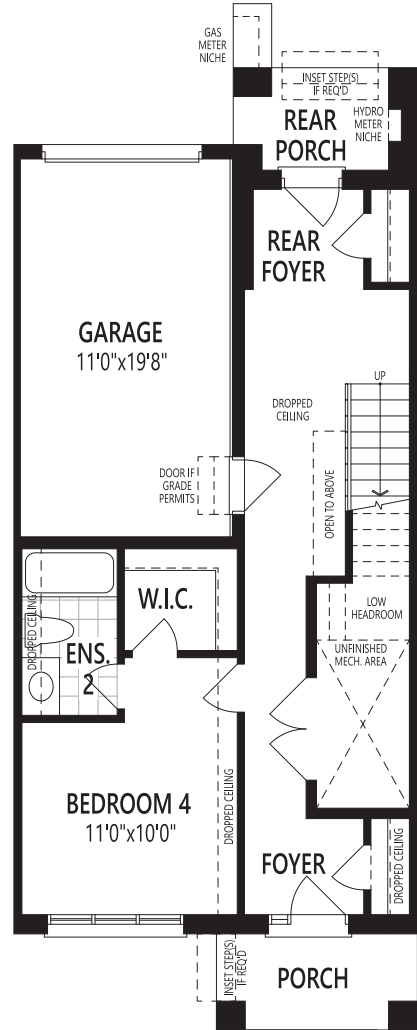


DUAL FRONT TOWNHOME

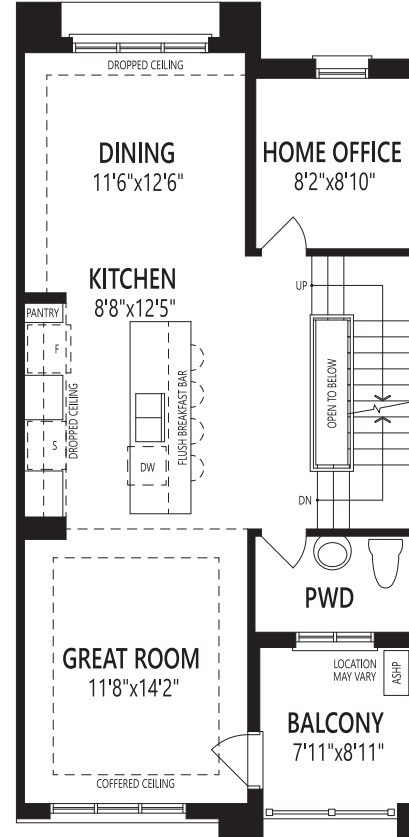
*The Clarence*

2,132 sq. ft.

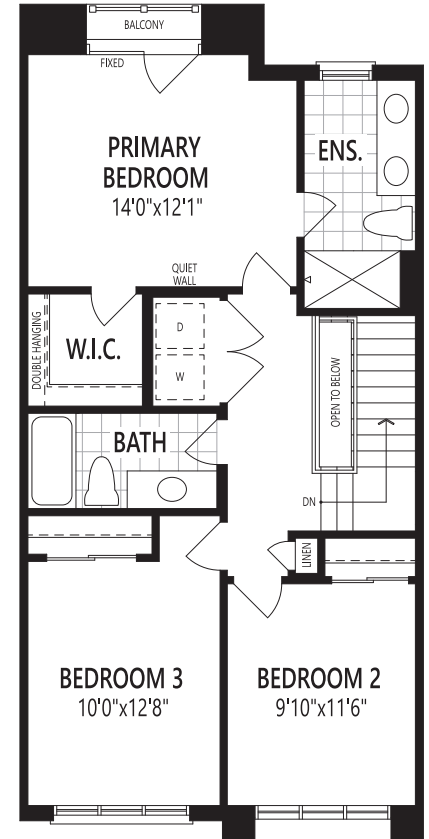
(Incl. 25 sq. ft. Open to Below)



Ground Floor



Second Floor



Third Floor

**BDFD** All illustrations are artist's concept. Specifications, terms and conditions are subject to change without notice. These floor plans and room dimensions apply to elevation 'French Manor' of this model type. Note: Actual usable floor space may vary from the stated floor area. Plans and room dimensions may vary according to elevation. Plan may be built as the mirror image. "Quiet wall" (where shown) means a wall in which additional insulation has been installed. This will assist in reducing, but not eliminating, ambient sound from adjoining rooms and mechanical systems. The extent of the reduction will vary depending upon various factors including, without limitation, the presence and extent of mechanical systems located in the wall. Please consult your sales representative. E.&O.E. August 2025 - Copyright 2025 - Mattamy Homes Limited.

THE NINE

DUAL FRONT TOWNHOME

*The Kennington*

2,160 sq. ft.

Traditional (TA)



French Manor (FM)



Modern (MO)





THE NINE

Modern (MO)

DUAL FRONT TOWNHOME

*The  
Clarence  
End*

2,164 sq. ft.



French Manor (FM)



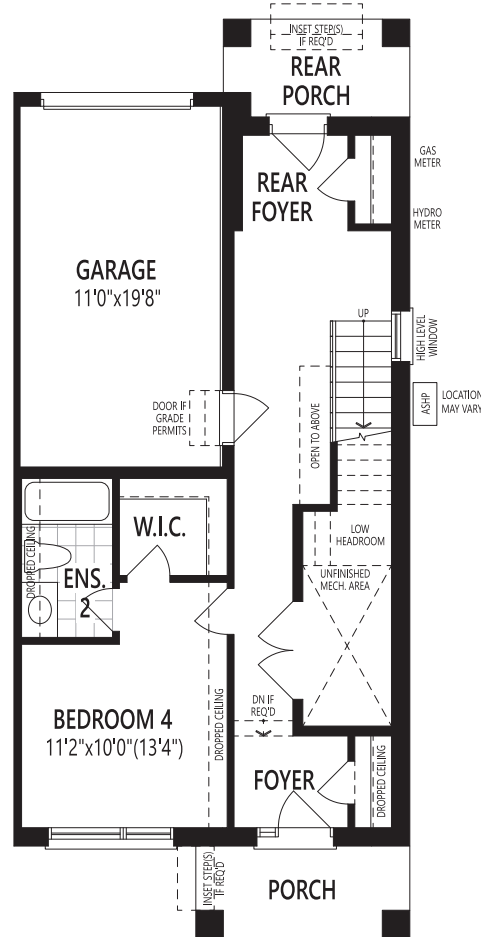
Traditional (TA)



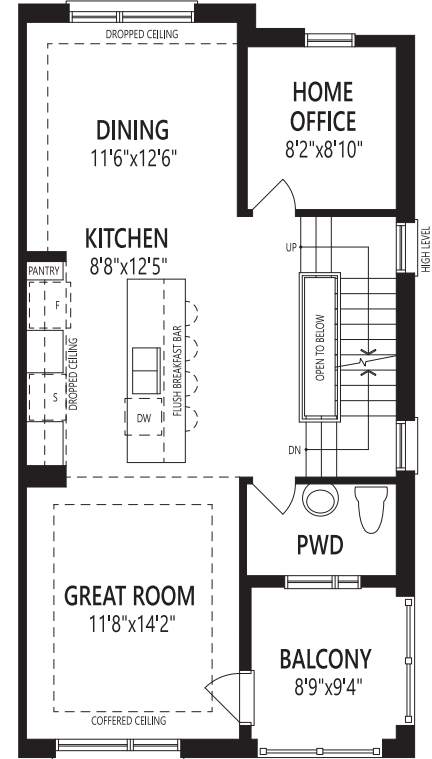
DUAL FRONT TOWNHOME

*The Clarence End*

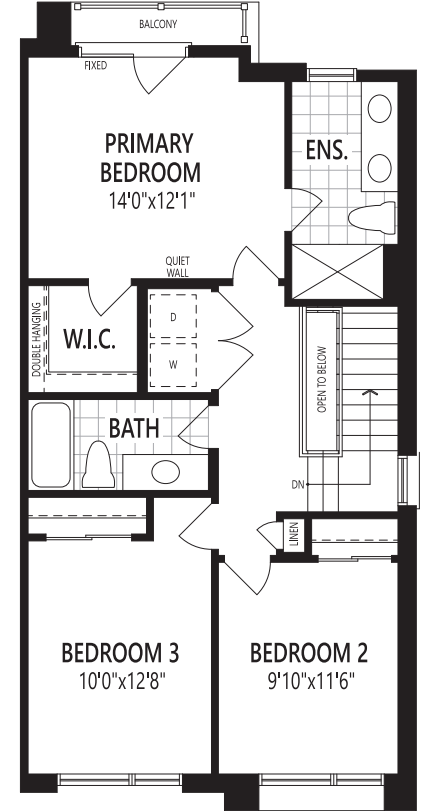
2,164 sq. ft.



Ground Floor



Second Floor



Third Floor

BDFE All illustrations are artist's concept. Specifications, terms and conditions are subject to change without notice. These floor plans and room dimensions apply to elevation 'Modern' of this model type. Note: Actual usable floor space may vary from the stated floor area. Plans and room dimensions may vary according to elevation. Plan may be built as the mirror image. "Quiet wall" (where shown) means a wall in which additional insulation has been installed. This will assist in reducing, but not eliminating, ambient sound from adjoining rooms and mechanical systems. The extent of the reduction will vary depending upon various factors including, without limitation, the presence and extent of mechanical systems located in the wall. Please consult your sales representative. E.&O.E. August 2025 - Copyright 2025 - Mattamy Homes Limited.

THE NINE

Traditional (TA)

DUAL FRONT TOWNHOME

*The  
Leyton  
Corner*

**2,216** sq. ft.



French Manor (FM)



Modern (MO)



DUAL FRONT TOWNHOME

*The Leyton Corner*

2,216 sq. ft.



Ground Floor

Second Floor

Third Floor

CDFD All illustrations are artist's concept. Specifications, terms and conditions are subject to change without notice. These floor plans and room dimensions apply to elevation "Traditional" of this model type. Note: Actual usable floor space may vary from the stated floor area. Plans and room dimensions may vary according to elevation. Plan may be built as the mirror image. "Quiet wall" (where shown) means a wall in which additional insulation has been installed. This will assist in reducing, but not eliminating, ambient sound from adjoining rooms and mechanical systems. The extent of the reduction will vary depending upon various factors including, without limitation, the presence and extent of mechanical systems located in the wall. Please consult your sales representative. E.&O.E. August 2025 - Copyright 2025 - Mattamy Homes Limited.

THE NINE

3-STOREY TOWNHOME

*The Northwick*

1,793 sq. ft.

Modern (MO)



French Manor (FM)



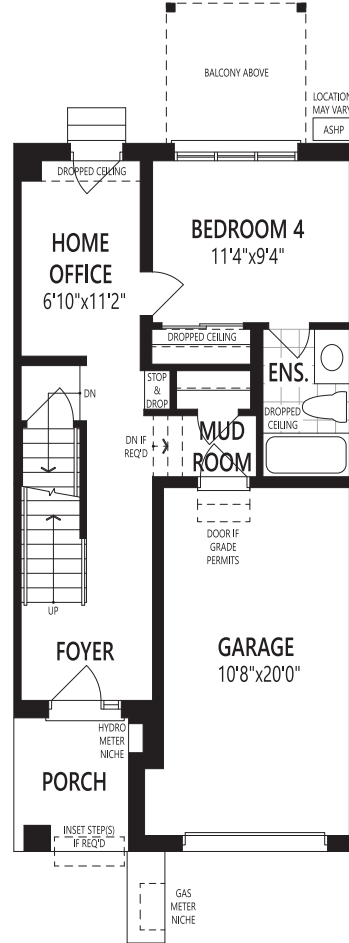
Traditional (TA)



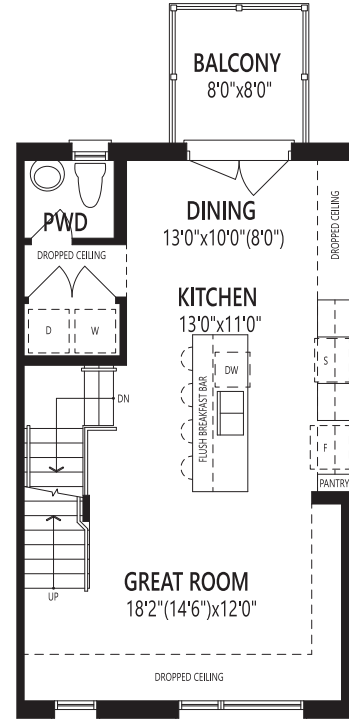
3-STOREY TOWNHOME

*The Northwick*

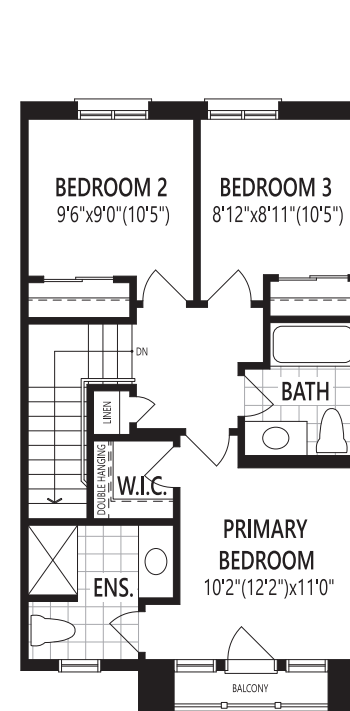
1,793 sq. ft.



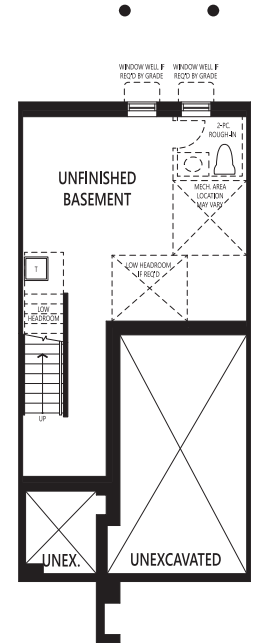
Ground Floor



Second Floor



Third Floor



Basement

JTHA All illustrations are artist's concept. Specifications, terms and conditions are subject to change without notice. These floor plans and room dimensions apply to elevation 'Modern' of this model type. Note: Actual usable floor space may vary from the stated floor area. Plans and room dimensions may vary according to elevation. Plan may be built as the mirror image. "Quiet wall" (where shown) means a wall in which additional insulation has been installed. This will assist in reducing, but not eliminating, ambient sound from adjoining rooms and mechanical systems. The extent of the reduction will vary depending upon various factors including, without limitation, the presence and extent of mechanical systems located in the wall. Please consult your sales representative. E.&O.E. July 2025 - Copyright 2025 - Mattamy Homes Limited.

THE NINE

French Manor (FM)

3-STOREY TOWNHOME

*The Paddington*

1,940 sq. ft.



Modern (MO)



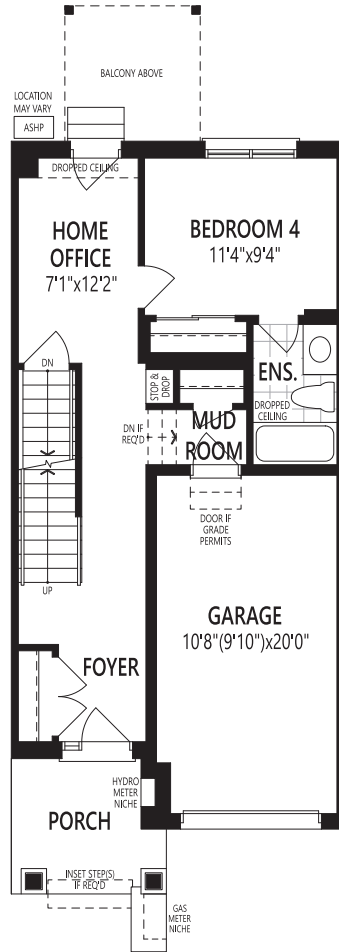
Traditional (TA)



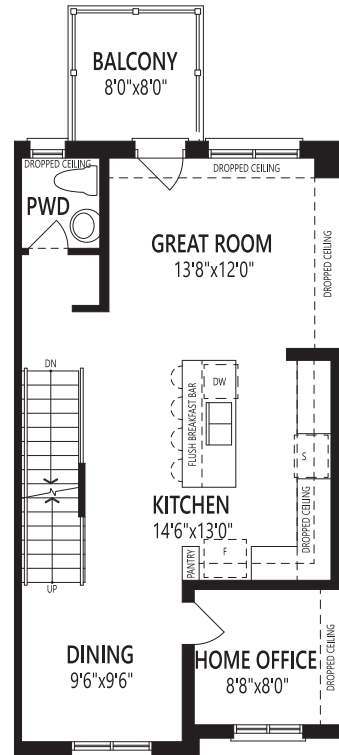
3-STOREY TOWNHOME

*The Paddington*

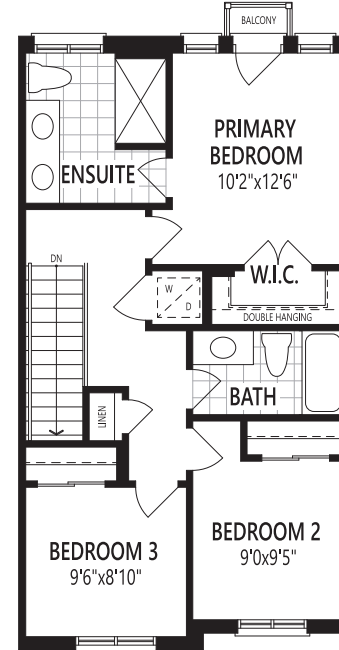
1,940 sq. ft.



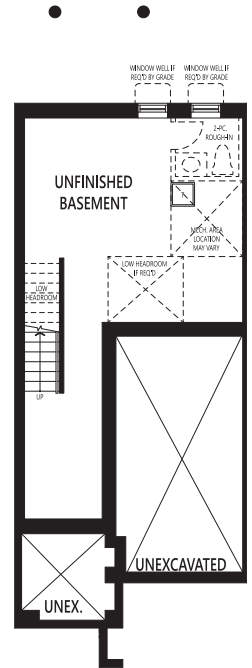
Ground Floor



Second Floor



Third Floor



Basement

JTHB All illustrations are artist's concept. Specifications, terms and conditions are subject to change without notice. These floor plans and room dimensions apply to elevation 'French Manor' of this model type. Note: Actual usable floor space may vary from the stated floor area. Plans and room dimensions may vary according to elevation. Plan may be built as the mirror image. "Quiet wall" (where shown) means a wall in which additional insulation has been installed. This will assist in reducing, but not eliminating, ambient sound from adjoining rooms and mechanical systems. The extent of the reduction will vary depending upon various factors including, without limitation, the presence and extent of mechanical systems located in the wall. Please consult your sales representative. E.&O.E. July 2025 - Copyright 2025 - Mattamy Homes Limited.

THE NINE

French Manor (FM)

3-STOREY TOWNHOME

*The Paddington*

1,940 sq. ft.



Modern (MO)



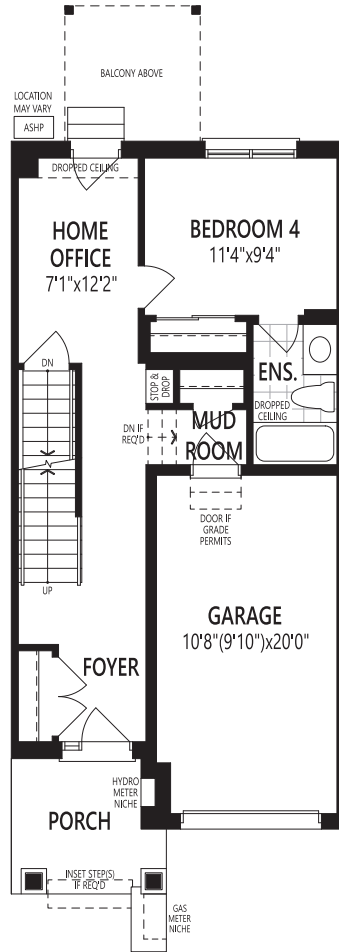
Traditional (TA)



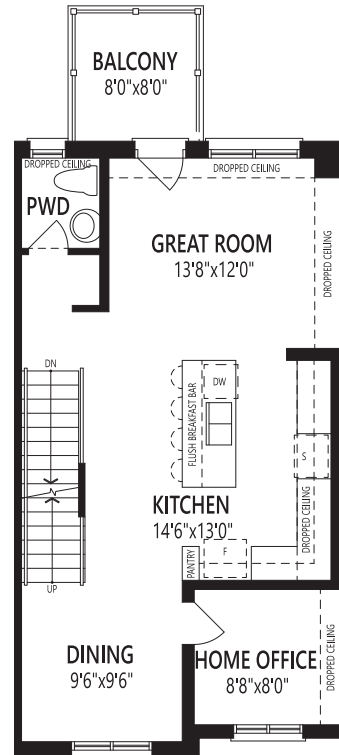
3-STOREY TOWNHOME

*The Paddington*

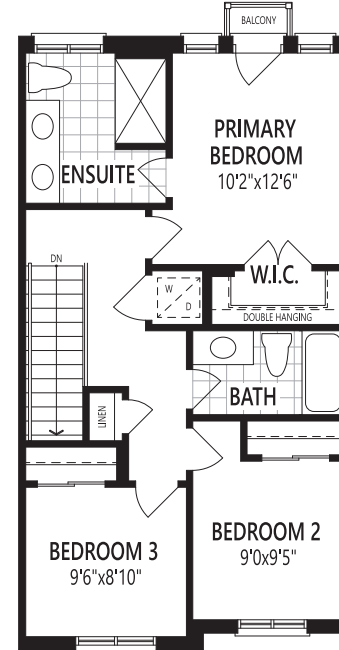
1,940 sq. ft.



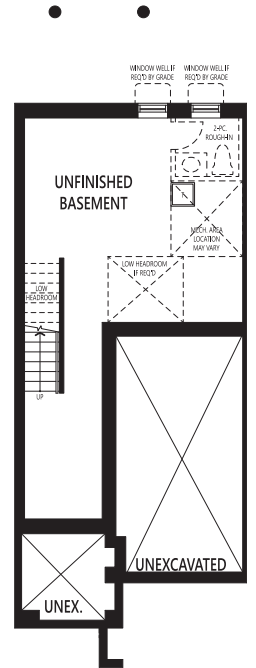
Ground Floor



Second Floor



Third Floor



Basement

JTHB All illustrations are artist's concept. Specifications, terms and conditions are subject to change without notice. These floor plans and room dimensions apply to elevation 'French Manor' of this model type. Note: Actual usable floor space may vary from the stated floor area. Plans and room dimensions may vary according to elevation. Plan may be built as the mirror image. "Quiet wall" (where shown) means a wall in which additional insulation has been installed. This will assist in reducing, but not eliminating, ambient sound from adjoining rooms and mechanical systems. The extent of the reduction will vary depending upon various factors including, without limitation, the presence and extent of mechanical systems located in the wall. Please consult your sales representative. E.&O.E. July 2025 - Copyright 2025 - Mattamy Homes Limited.

THE NINE

3-STOREY TOWNHOME

*The Paddington End*

2,005 sq. ft.

Traditional (TA)



French Manor (FM)



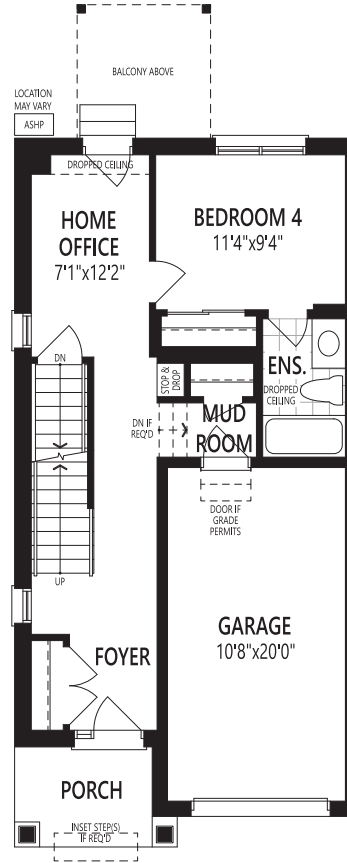
Modern (MO)



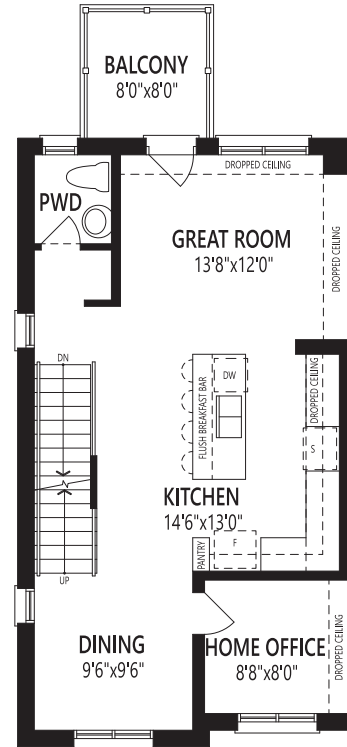
3-STOREY TOWNHOME

*The Paddington End*

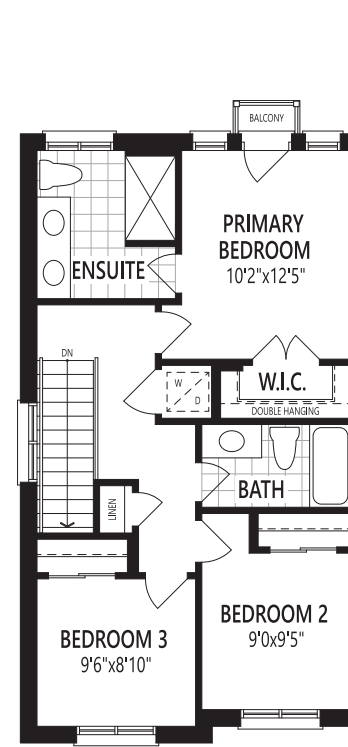
2,005 sq. ft.



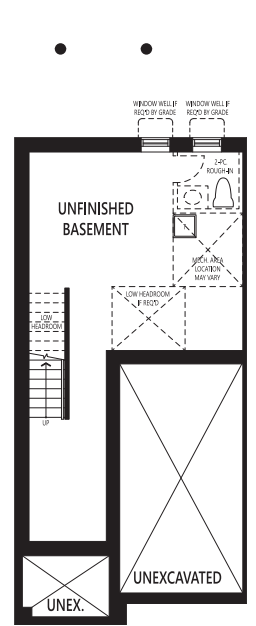
Ground Floor



Second Floor



Third Floor



Basement

JTHC All illustrations are artist's concept. Specifications, terms and conditions are subject to change without notice. These floor plans and room dimensions apply to elevation 'Traditional' of this model type. Note: Actual usable floor space may vary from the stated floor area. Plans and room dimensions may vary according to elevation. Plan may be built as the mirror image. "Quiet wall" (where shown) means a wall in which additional insulation has been installed. This will assist in reducing, but not eliminating, ambient sound from adjoining rooms and mechanical systems. The extent of the reduction will vary depending upon various factors including, without limitation, the presence and extent of mechanical systems located in the wall. Please consult your sales representative. E.&O.E. July 2025 - Copyright 2025 - Mattamy Homes Limited.

THE NINE

3-STOREY TOWNHOME

*The  
Preston*

2,153 sq. ft.

Traditional (TA)



French Manor (FM)



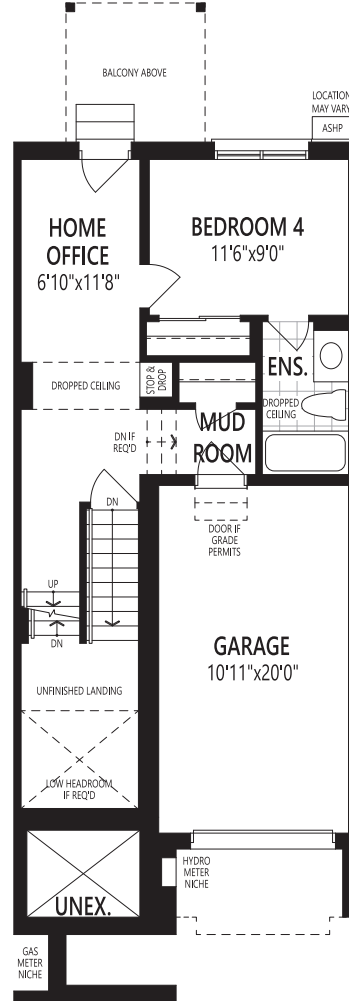
Modern (MO)



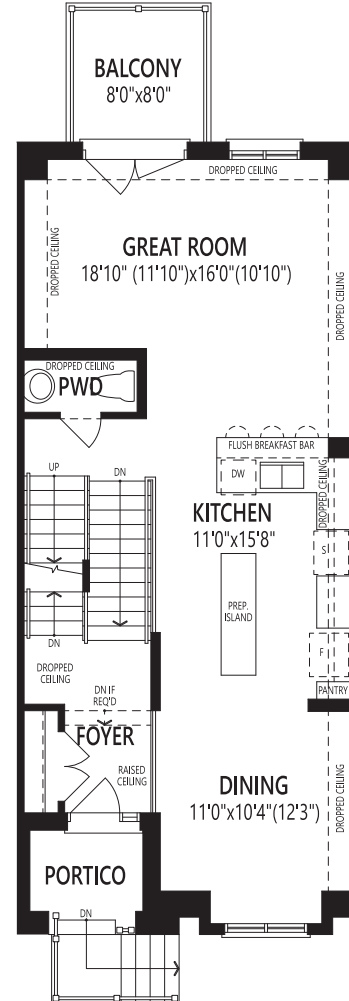
3-STOREY TOWNHOME

*The Preston*

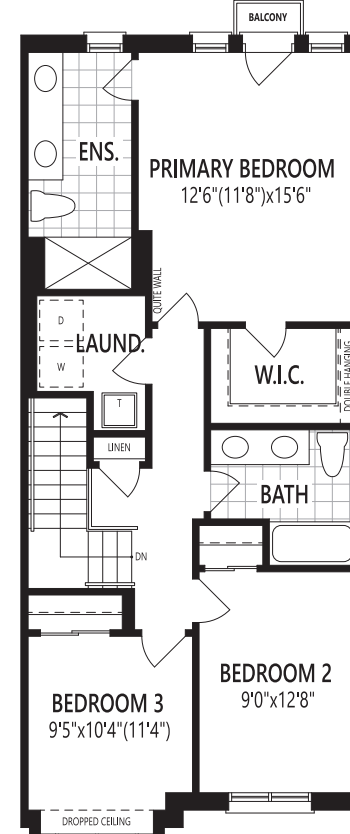
2,153 sq. ft.



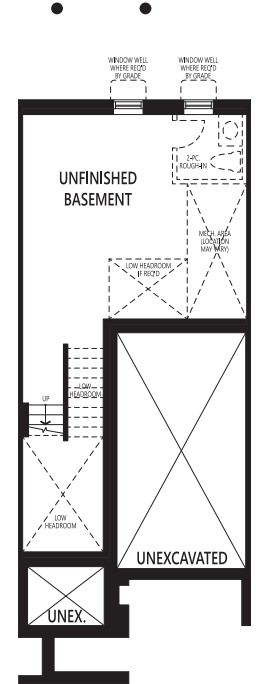
Ground Floor



Second Floor



Third Floor



Basement

JTHD All illustrations are artist's concept. Specifications, terms and conditions are subject to change without notice. These floor plans and room dimensions apply to elevation 'Traditional' of this model type. Note: Actual usable floor space may vary from the stated floor area. Plans and room dimensions may vary according to elevation. Plan may be built as the mirror image. "Quiet wall" (where shown) means a wall in which additional insulation has been installed. This will assist in reducing, but not eliminating, ambient sound from adjoining rooms and mechanical systems. The extent of the reduction will vary depending upon various factors including, without limitation, the presence and extent of mechanical systems located in the wall. Please consult your sales representative. E.&O.E. July 2025 - Copyright 2025 - Mattamy Homes Limited.

THE NINE

3-STOREY TOWNHOME

*The Stonebridge Corner*

2,198 sq. ft.

Traditional (TA)



French Manor (FM)



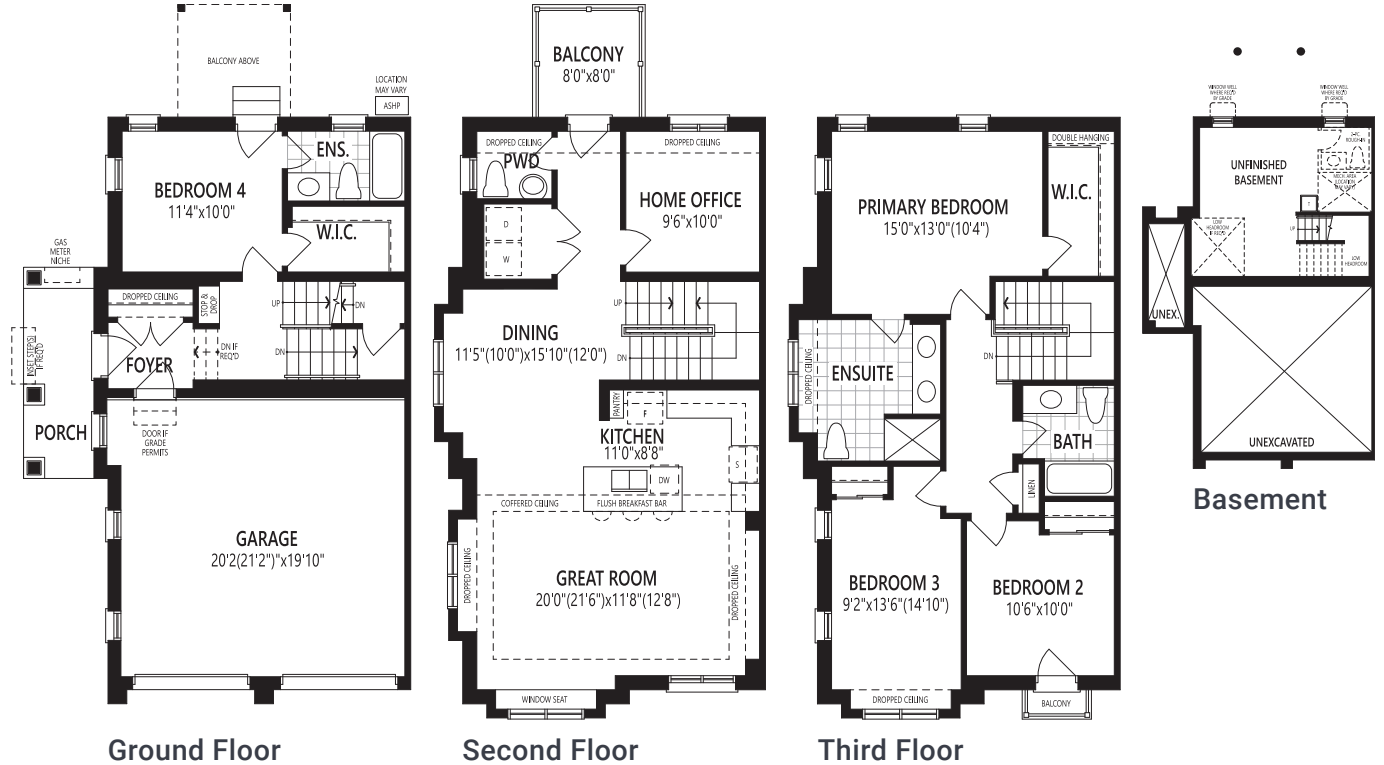
Modern (MO)



3-STOREY TOWNHOME

*The Stonebridge Corner*

2,198 sq. ft.



JTHF All illustrations are artist's concept. Specifications, terms and conditions are subject to change without notice. These floor plans and room dimensions apply to elevation 'Traditional' of this model type. Note: Actual usable floor space may vary from the stated floor area. Plans and room dimensions may vary according to elevation. Plan may be built as the mirror image. "Quiet wall" (where shown) means a wall in which additional insulation has been installed. This will assist in reducing, but not eliminating, ambient sound from adjoining rooms and mechanical systems. The extent of the reduction will vary depending upon various factors including, without limitation, the presence and extent of mechanical systems located in the wall. Please consult your sales representative. E.&O.E. July 2025 - Copyright 2025 - Mattamy Homes Limited.

THE NINE

Modern (MO)

3-STOREY TOWNHOME

*The  
Preston  
End*

**2,213** sq. ft.



French Manor (FM)



Traditional (TA)





THE NINE

Modern (MO)

3-STOREY TOWNHOME

*The  
Oxbridge*

**2,342** sq. ft.

(Incl. 63 sq. ft. Open to Below)



French Manor (FM)



Traditional (TA)





THE NINE

French Manor (FM)

3-STOREY TOWNHOME

*The  
Oxbridge  
End*

**2,420** sq. ft.

(Incl. 63 sq. ft. Open to Below)



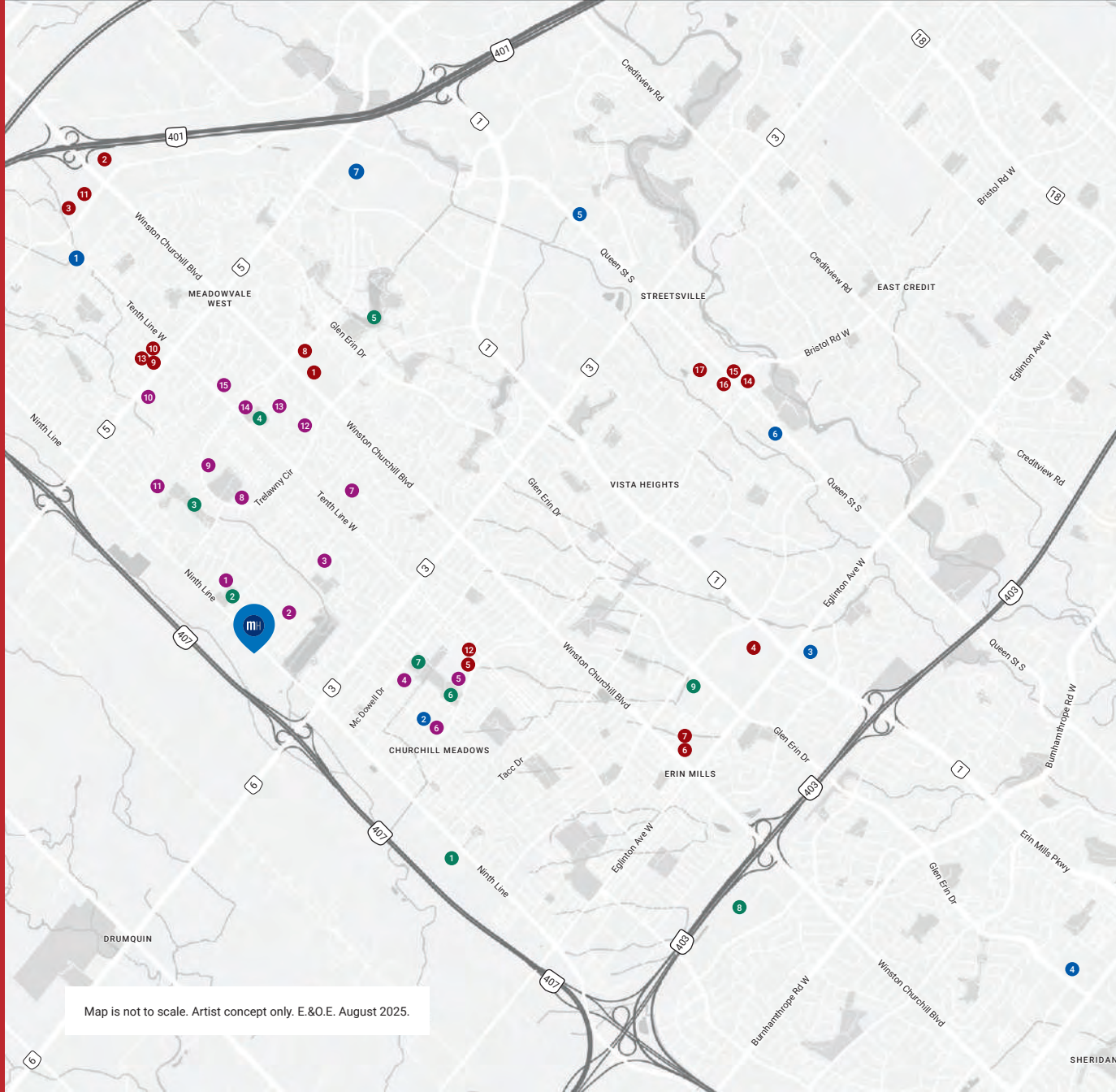
Modern (MO)



Traditional (TA)







Map is not to scale. Artist concept only. E.&O.E. August 2025.

**SCHOOLS**

1. St. Simon Stock Elementary School
2. Osprey Woods Public School
3. St. Edith Stein Elementary School
4. St. Faustina Catholic Elementary School
5. Stephen Lewis Secondary School
6. St. Joan of Arc Catholic Secondary School
7. Millers Grove Public School
8. Trelawny Public School
9. Our Lady of Mount Carmel Catholic Secondary School
10. St. Therese of the Child Jesus Catholic Elementary School
11. Lisgar Middle School
12. Meadowvale Secondary School
13. Edenwood Middle School
14. St. John of the Cross Catholic Elementary School
15. Plum Tree Park Public School

**CITY SERVICES**

1. Lisgar GO
2. Churchill Meadows Library
3. Credit Valley Hospital
4. Service Canada
5. ServiceOntario
6. Streetsville GO
7. Meadowvale GO

**PARKS & RECREATION**

1. Churchill Meadows Community Centre and Mattamy Sports Park
2. Cordingley Park
3. Lisgar Fields Community Park
4. Eden Woods Park
5. Lake Aquitaine Park
6. Churchill Meadows SkatePark
7. Friendship Community Park
8. Erin Mills Twin Arena
9. Erin Meadows Community Centre

**BANKS, RESTAURANTS, SHOPPING**

1. Meadowvale Town Centre  
• Metro • Shoppers Drug Mart • GoodLife • Canadian Tire • MacDonald's • Taps Public House • Tim Hortons • BMO • TD • CIBC
2. Winston Argenta Centre  
• Best Buy • Longo's • Starbucks • RBC • Jack Astor's • Moxies
3. SmartCentres Meadowvale  
• Walmart • Staples • Real Canadian Superstore • Shoppers Drug Mart • Dollarama • Winners & HomeSense • Michaels • PetSmart • Montana's • The Keg
4. Erin Mills Town Centre  
• Walmart Supercentre • Indigo • Cineplex JUNXION • Marshalls • Dollarama • Bouclair • HomeSense • Scotiabank • Bath & Body Works • Foot Locker & much more
5. Brittany Glen Centre
6. Nations Fresh Foods
7. Rona
8. Global Pet Foods
9. Scotiabank
10. Osmow's Shawarma
11. Church's Texas Chicken
12. Lazeez Shawarma
13. Burger Factory
14. Murphy's Ice Cream Parlour
15. Goodfellas Wood Oven Pizza
16. Kate's Town Talk Bakery
17. Cagney's Steakhouse & Winebar