

# Sienna

**TOWER 2**



**THOMPSON**  
TOWERS



THOMPSON  
TOWERS

Thompson Towers is  
an urban community  
coming to the heart  
of **MILTON**.

Located at Thompson Road South and  
Drew Centre, our second tower, Sienna, will  
offer seamless access to an unparalleled  
transit system and a host of exclusive  
amenities at the Thompson Club. With its  
eye-catching architecture and meticulously  
landscaped surroundings, Thompson Towers  
is ushering in a new era for urban life.  
Experience Milton like never before.

# Milton Reimagined



\*artist's impression

# Welcome Home

PORTE-COCHÈRE



\*artist's impression



The Thompson Towers experience begins at the porte-cochère. This architectural feature blends style and functionality, setting the stage for a memorable arrival for both residents and their guests. Residents at Sienna tower will also have their own private entrance.

\*artist's impression



SIENNA  
ENTRANCE

# Pedestrian Paradise

Sienna tower's street level has been designed to cater to an effortless lifestyle. From morning meetings with friends or family, to afternoon walks, to evening errands, you won't have to venture far from home. It's just one of the many ways we're upgrading urban life in Milton.

RETAIL PROMENADE



\*artist's impression



# A Lobby That Leaves an Impression

Enter the lobby and you'll find a space that makes an immediate impression: refined finishes, plenty of natural light, and a curated selection of materials. The lobby features modern seating areas, elegant marble accents, and rustic wood elements, along with convenient services like parcel storage, all complemented by the attentive service of a concierge.



\*artist's impression



\*artist's impression



Welcome to the Thompson Club, a unique, state-of-the-art indoor and outdoor amenity space.

The Thompson Club features an outdoor pool, walking track, gardens, sports courts, dog run, children's play area, as well as patios, gazebos, and picnic areas. Indoors, you'll find fireside lounges, areas to host a dinner party, modern fitness facilities, a yoga studio, and many more amenities to enjoy.

# THOMPSON CLUB

**THOMPSON CLUB**  
Sienna Tower

**INTERIOR AMENITIES**

- 1** Fitness Centre
- 2** Sienna Lounge
- 3** Private Dining
- 4** Party Room
- 5** Yoga Studio



**EXTERIOR AMENITIES**

- 6** Outdoor Pool
- 7** BBQ Lounge
- 8** Splash Pad
- 9** Walking Track
- 10** Dog Run
- 11** Outdoor Yoga Area
- 12** Multi-Purpose Sports Courts

\*Illustration is artist's impression. All dimensions are approximate. Specifications, terms and conditions are subject to change without notice. E. & O.E. May 2023

# KICK BACK BY THE POOL

The indoor pool lounge, adjacent to the outdoor amenities, features panoramic views, a wet bar, and multiple dining areas, making it the perfect space for social gatherings.

The Thompson Club's outdoor, rooftop pool is your personal ticket to a sun-soaked day of rest and relaxation. With ample seating, dining spaces, gazebos, and a splash pad to keep younger residents entertained for hours on end, the pool area is one of the Thompson Club's premier amenities.





MULTI-PURPOSE COURT

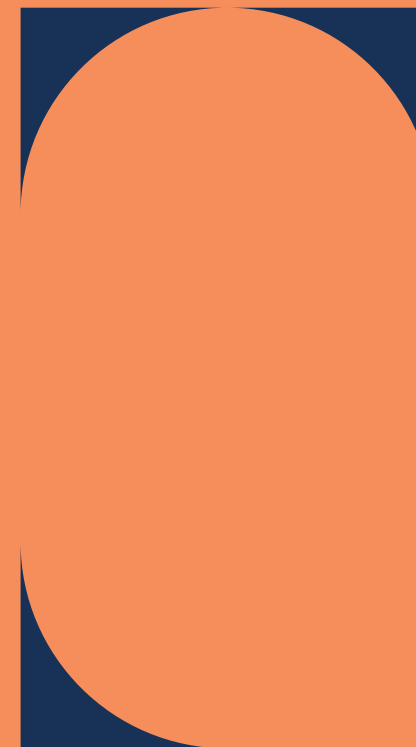


\*artist's impression

BBQ LOUNGE

Challenge your friends to a game of basketball or tennis at the Thompson Club's multi-use sports court. Or find your zen in our tranquil outdoor yoga area, where you can stretch, breathe, and centre yourself. Once you're finished, fire up the grill at one of our outdoor cooking areas, or lounge by the outdoor fire features. From morning until after dark, the Thompson Club offers a versatile setting for relaxing or socializing.

# PLAY OUTSIDE



OUTDOOR YOGA

# THE ULTIMATE INDOOR VENUE



PARTY ROOM

SIENNA LOUNGE



The Thompson Club is the perfect venue to celebrate a milestone. The Sienna Lounge is a spacious and stylish area furnished with comfortable seating, tables, and a cozy fireplace where you can host your guests. Then move over to our beautiful dining areas complete with a caterer's kitchen where you can make all the preparations. Bon appétit.

# YOUR WELLNESS HUB

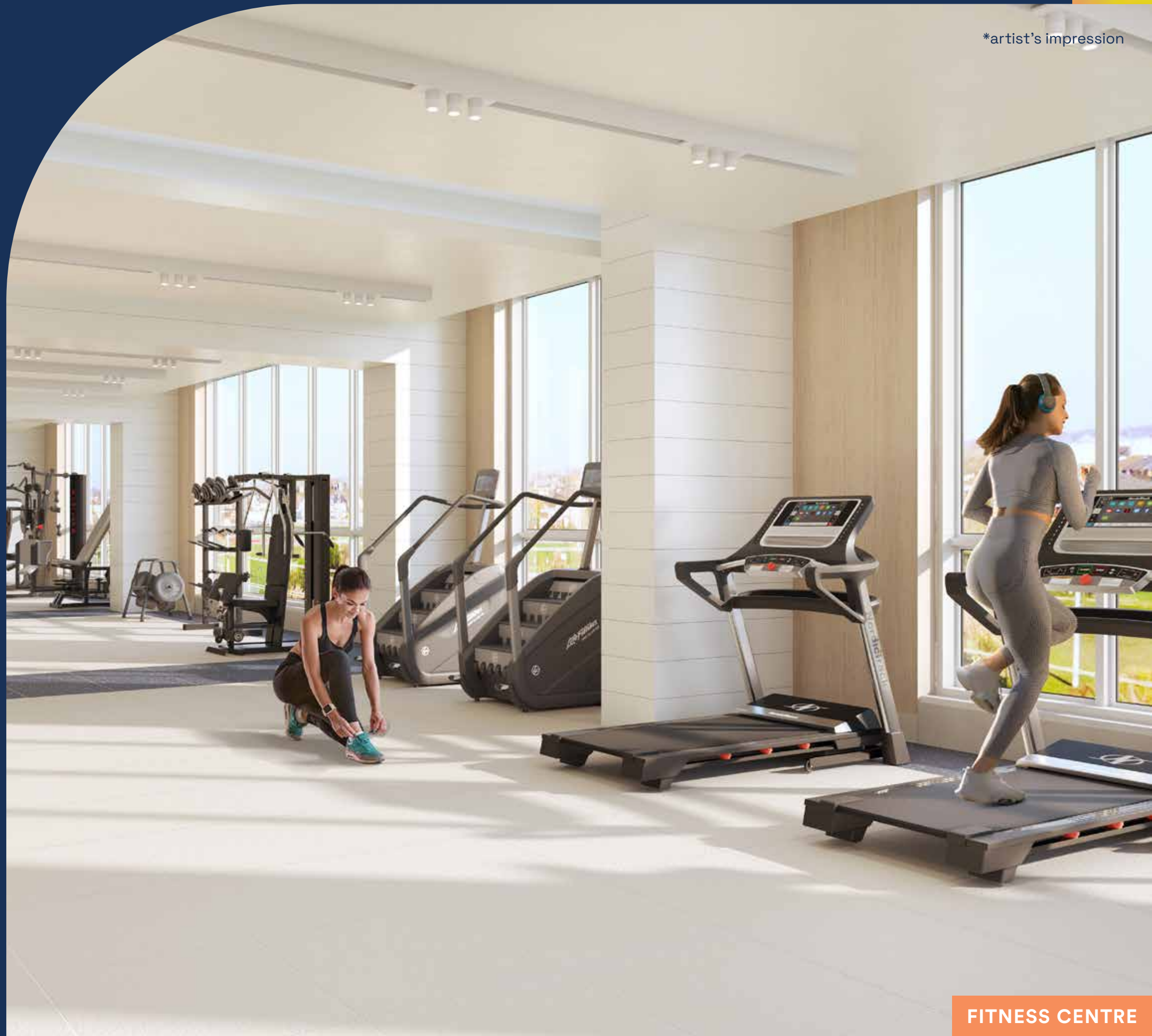
Maintaining an active lifestyle is easy at Thompson Towers. Our state-of-the-art fitness centre and yoga studio are equipped to support your wellness journey.

YOGA STUDIO

\*artist's impression



\*artist's impression



FITNESS CENTRE

# The Area



## shops & restaurants

- Walmart
- Canadian Tire
- Indigo
- Sport Chek
- Longo's
- Home Depot
- PetSmart
- The Beer Store
- Best Buy
- The Brick
- Turtle Jack's
- The Tarka House
- Quik Chik
- Tim Hortons
- McDonald's
- A&W
- Real Canadian Superstore
- Mucho Burrito
- Dollarama
- Baskin Robbins
- Starbucks
- LCBO
- TD Canada Trust
- Scotiabank
- Shoeless Joe's
- Milton Common Mall
- Hero Certified Burgers
- Shoppers Drug Mart
- Swiss Chalet
- KFC
- barBURRITO
- Metro

## parks & recreation

- Sprucedale Park
- Woodward Woodlot
- Kinsmen Park
- Wallbrook Park
- Menefy Park
- Beaty Trail Park
- Livingston Trail
- Bristol District Park
- Savoline Park
- Sherwood Park
- Trudeau Park
- Field Park
- Laurier Park
- Benjamin Chee Chee Park
- Walker Park
- Optimist Park
- Gastle Park
- McCready Park
- Cricket Park
- Maquire Park

## education

- Milton District High School
- E.W. Foster Public School
- St. Peter Catholic Elementary School
- W.I.D. Middle School
- Chris Hadfield Public School
- Tarbiyah Elementary School

OAKVILLE

Oakville Trafalgar Memorial Hospital

\*Map not to scale.

# COMMUTING MADE EASY

## Transit

At Thompson Towers you are just a few-moments' walk from the Milton GO station, offering frequent train service to downtown Toronto and local bus service. For those who prefer to drive, the highways and major traffic thoroughfares are easily accessible.





## Entertainment

At Thompson Towers, you'll have access to a wide array of shopping, dining, and entertainment options right at your doorstep; big box stores close by, boutiques in Milton's downtown. Indulge in a wide variety of world cuisines, from upscale restaurants to cozy local eateries. Shop at Toronto Premium Outlets just one exit east on the 401, and experience the live shows and cultural programming at the First Ontario Arts Centre just a few minutes' walk away.

**LIFESTYLE  
ELEVATED**





# ADVENTURE AWAITS



## Recreation

Thompson Towers is across the street from Lion's Sports Park. It offers some of the city's top recreational facilities including ball diamonds, sports fields, and a skate park. The community's location on the Niagara Escarpment also means you're never far from the scenic trails and stunning lookouts of conservation areas such as Rattlesnake Point or Crawford Lake, or premier public golf courses such as Piper's Heath.

# Tower Suites

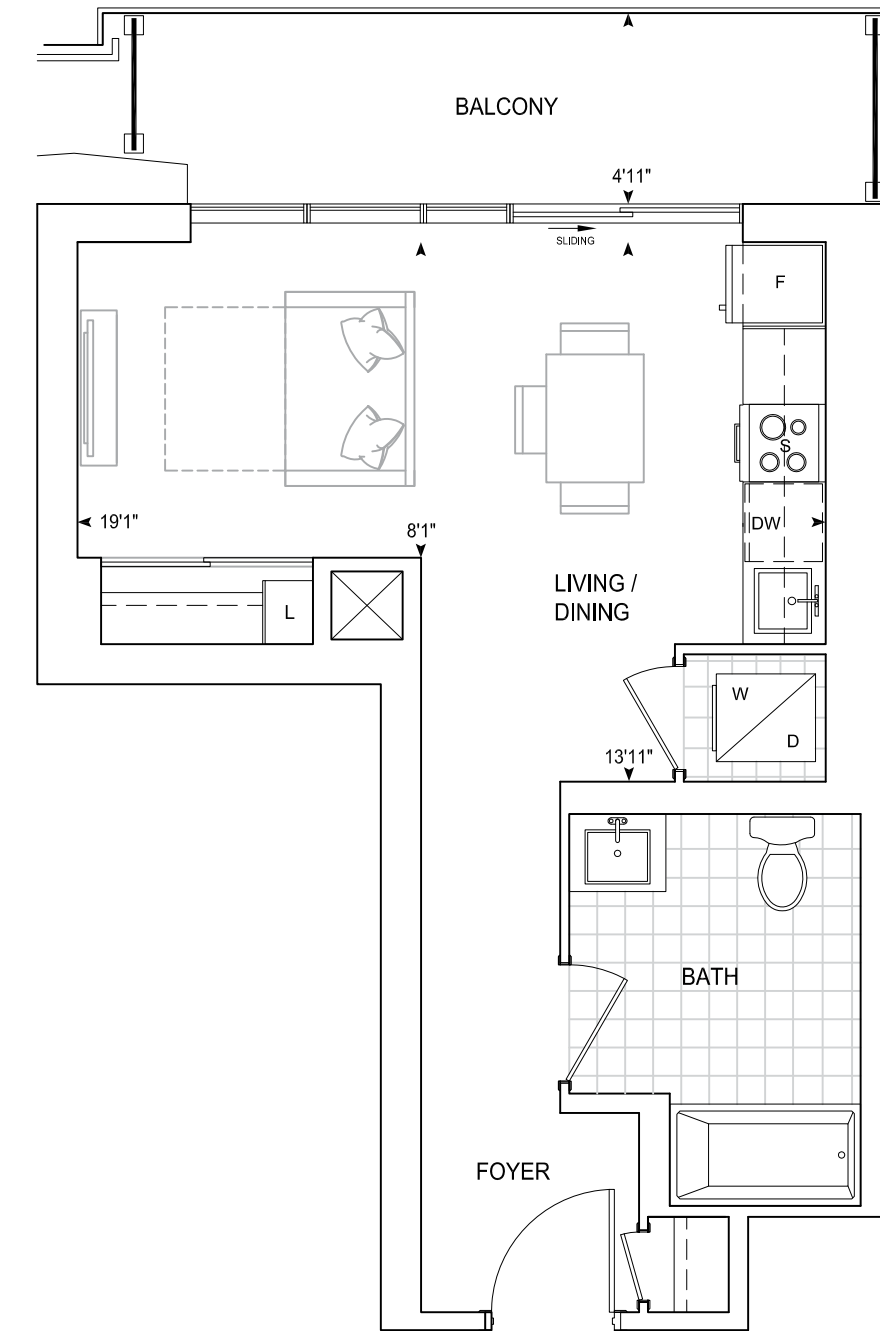


\*artist's impression

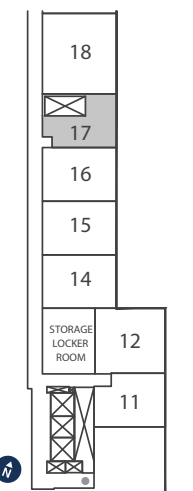
## S465 BF

**STUDIO** Barrier Free

Exterior 90 sq.ft. Interior 465 sq.ft. Total 555 sq.ft.



9' CEILINGS  
FLOOR 3



FLOOR 3

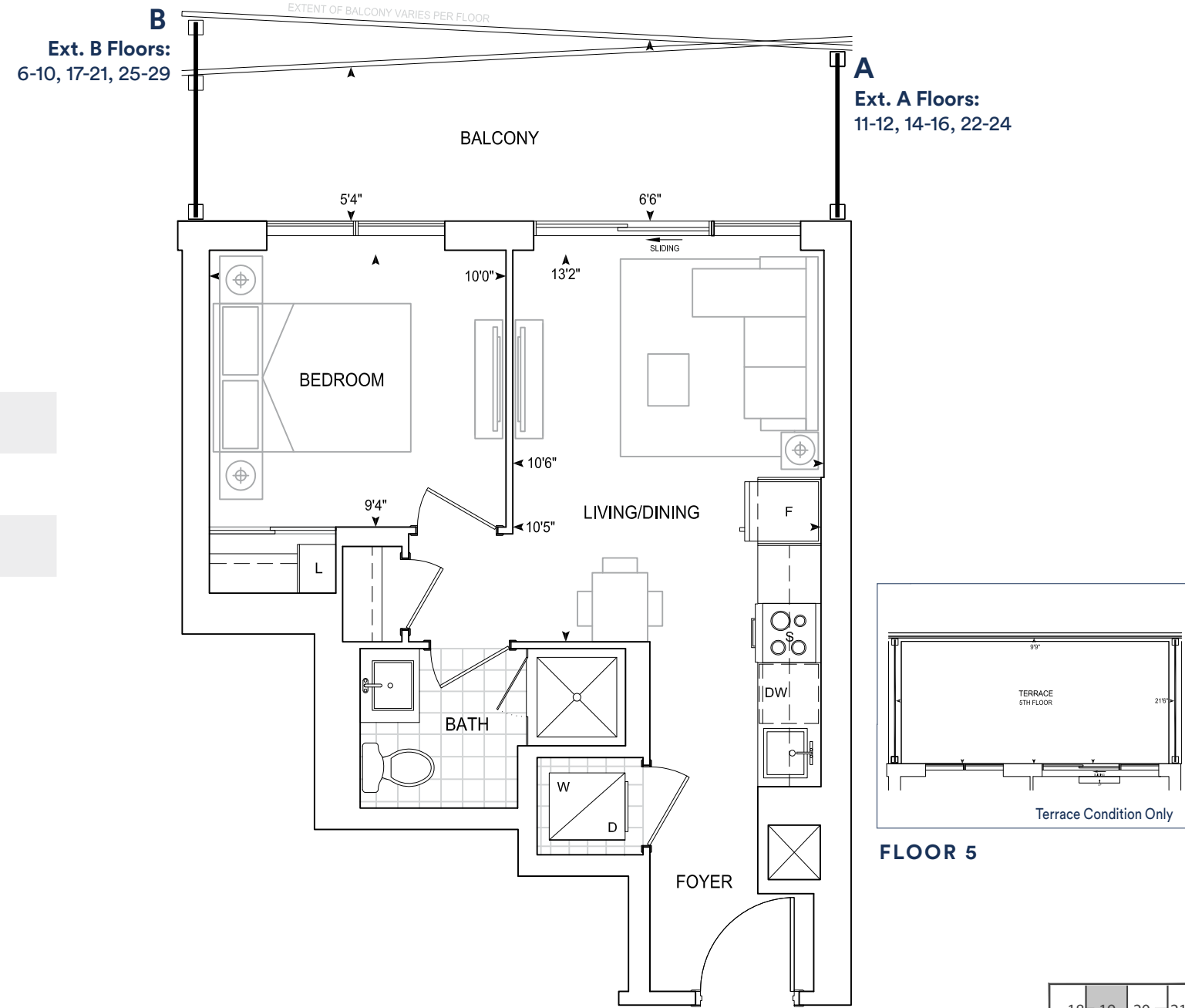


Dimensions, specifications, layouts, location of materials and fixtures, tile floor patterns and architectural detailing (including window size and location and door size, location and swing) are approximate only and are subject to change or modifications, without notice. Actual usable floor space varies from stated floor area. Orientation of suite may be reverse and Purchaser agrees to accept same. Balconies, terraces and patios are exclusive use common elements shown for display purposes only and location and size are subject to change without notice. All illustrations are artist concept only. The provisions of Schedule "X" of this Agreement, including Section 6 and 38 apply to this Schedule. E. & O.E. April 2024

# A462

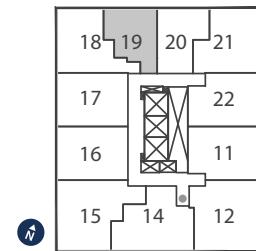
## 1 BEDROOM

Exterior A 119 sq.ft. Interior 462 sq.ft. Total 581 sq.ft.  
 Exterior B 143 sq.ft. Interior 462 sq.ft. Total 605 sq.ft.  
 Terrace 207 sq.ft. Interior 462 sq.ft. Total 669 sq.ft.



9' CEILINGS  
 FLOORS 5-10, 12, 14-21, 23-28

THOMPSON SERIES 10' CEILINGS  
 FLOORS 11, 22, 29



FLOORS  
 5-12, 14-29

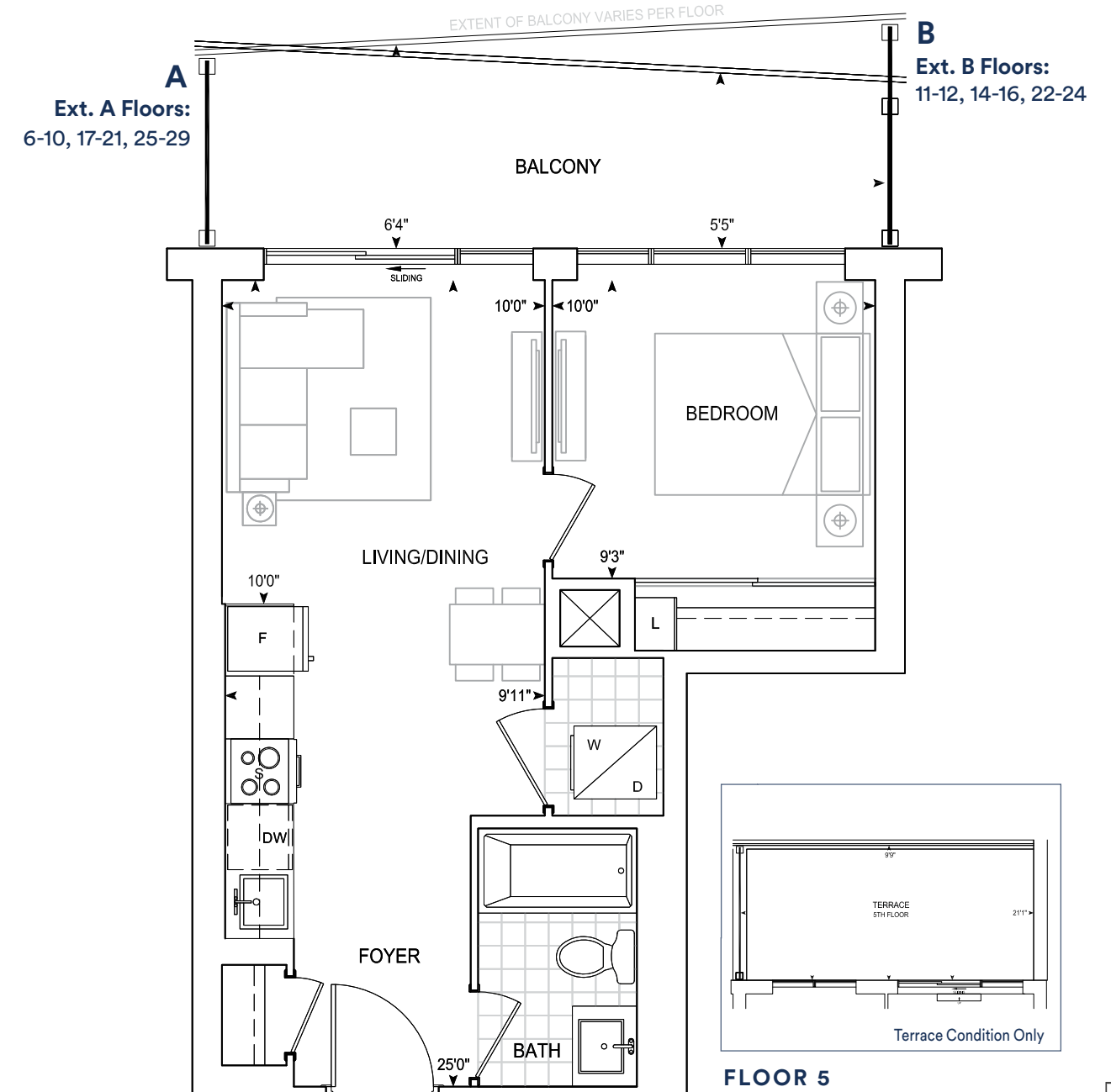


Dimensions, specifications, layouts, location of materials and fixtures, tile floor patterns and architectural detailing (including window size and location and door size, location and swing) are approximate only and are subject to change or modifications, without notice. Actual usable floor space varies from stated floor area. Orientation of suite may be reverse and Purchaser agrees to accept same. Balconies, terraces and patios are exclusive use common elements shown for display purposes only and location and size are subject to change without notice. All illustrations are artist concept only. The provisions of Schedule "X" of this Agreement, including Section 6 and 38 apply to this Schedule. E. & O.E. April 2024

# A475

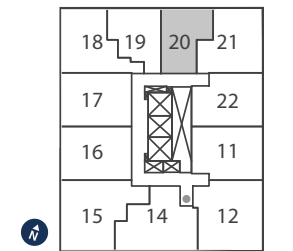
## 1 BEDROOM

Exterior A 116 sq.ft. Interior 475 sq.ft. Total 591 sq.ft.  
 Exterior B 140 sq.ft. Interior 475 sq.ft. Total 615 sq.ft.  
 Terrace 198 sq.ft. Interior 475 sq.ft. Total 673 sq.ft.



9' CEILINGS  
 FLOORS 5-10, 12, 14-21, 23-28

THOMPSON SERIES 10' CEILINGS  
 FLOORS 11, 22, 29



FLOORS  
 5-12, 14-29



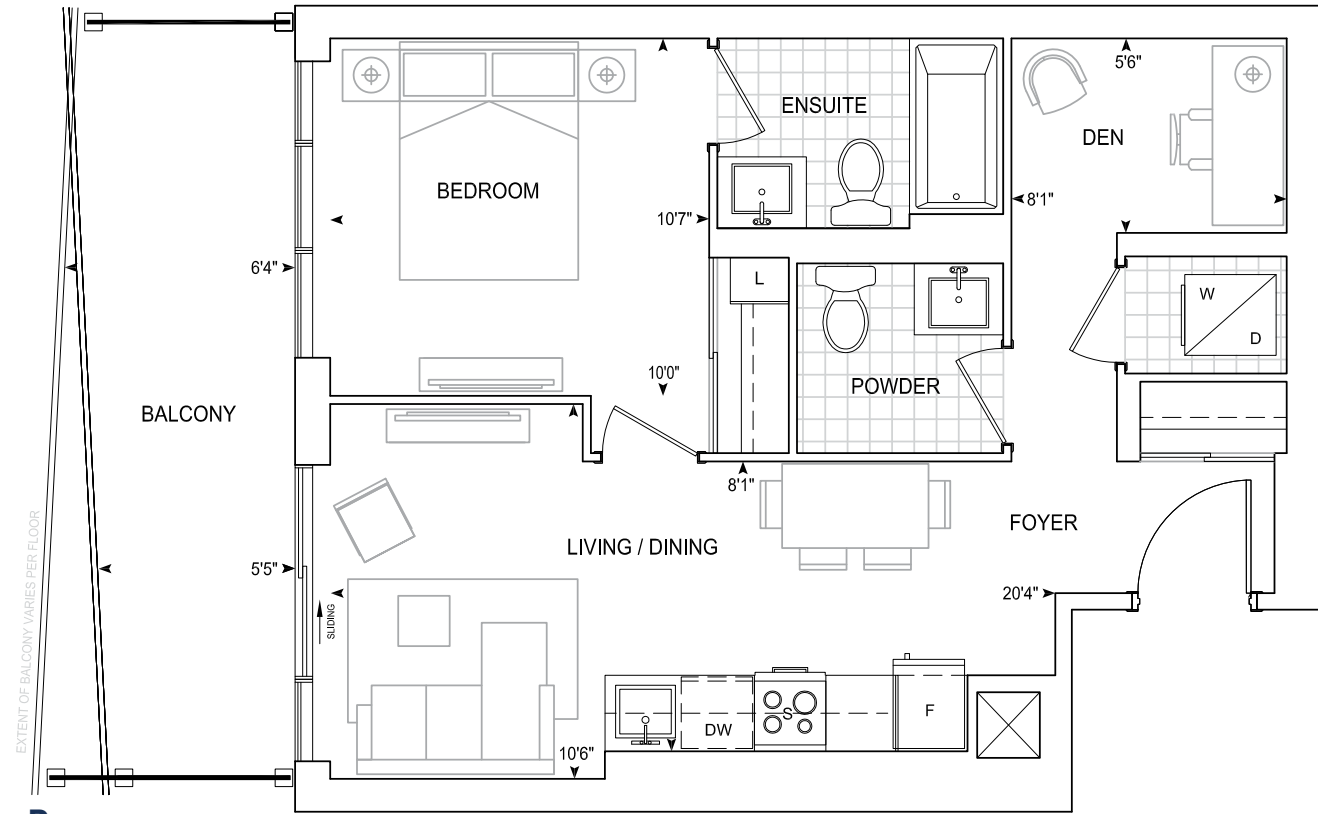
Dimensions, specifications, layouts, location of materials and fixtures, tile floor patterns and architectural detailing (including window size and location and door size, location and swing) are approximate only and are subject to change or modifications, without notice. Actual usable floor space varies from stated floor area. Orientation of suite may be reverse and Purchaser agrees to accept same. Balconies, terraces and patios are exclusive use common elements shown for display purposes only and location and size are subject to change without notice. All illustrations are artist concept only. The provisions of Schedule "X" of this Agreement, including Section 6 and 38 apply to this Schedule. E. & O.E. April 2024

# B595

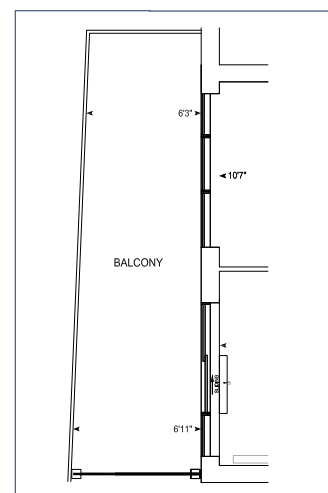
**1 BEDROOM + DEN**

**Exterior A 119 sq.ft. Interior 595 sq.ft. Total 714 sq.ft.**  
**Exterior B 141 sq.ft. Interior 595 sq.ft. Total 736 sq.ft.**  
**Exterior C 161 sq.ft. Interior 595 sq.ft. Total 756 sq.ft.**

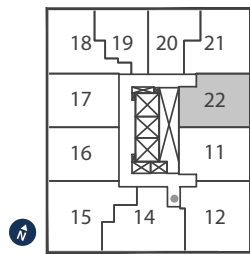
**A**  
**Ext. A Floors:**  
 5, 11-12, 14-16, 22-24



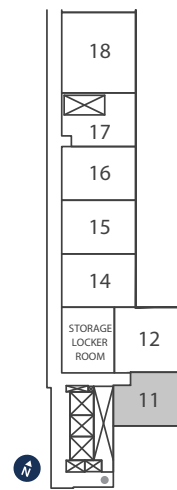
**B**  
**Ext. B Floors:**  
 6-10, 17-21, 25-29



**FLOOR 3 Ext. C**



**FLOORS**  
 5-12, 14-29



**FLOOR 3**

**9' CEILINGS**  
**FLOORS 3, 5-10, 12, 14-21, 23-28**

**THOMPSON SERIES 10' CEILINGS**  
**FLOORS 11, 22, 29**



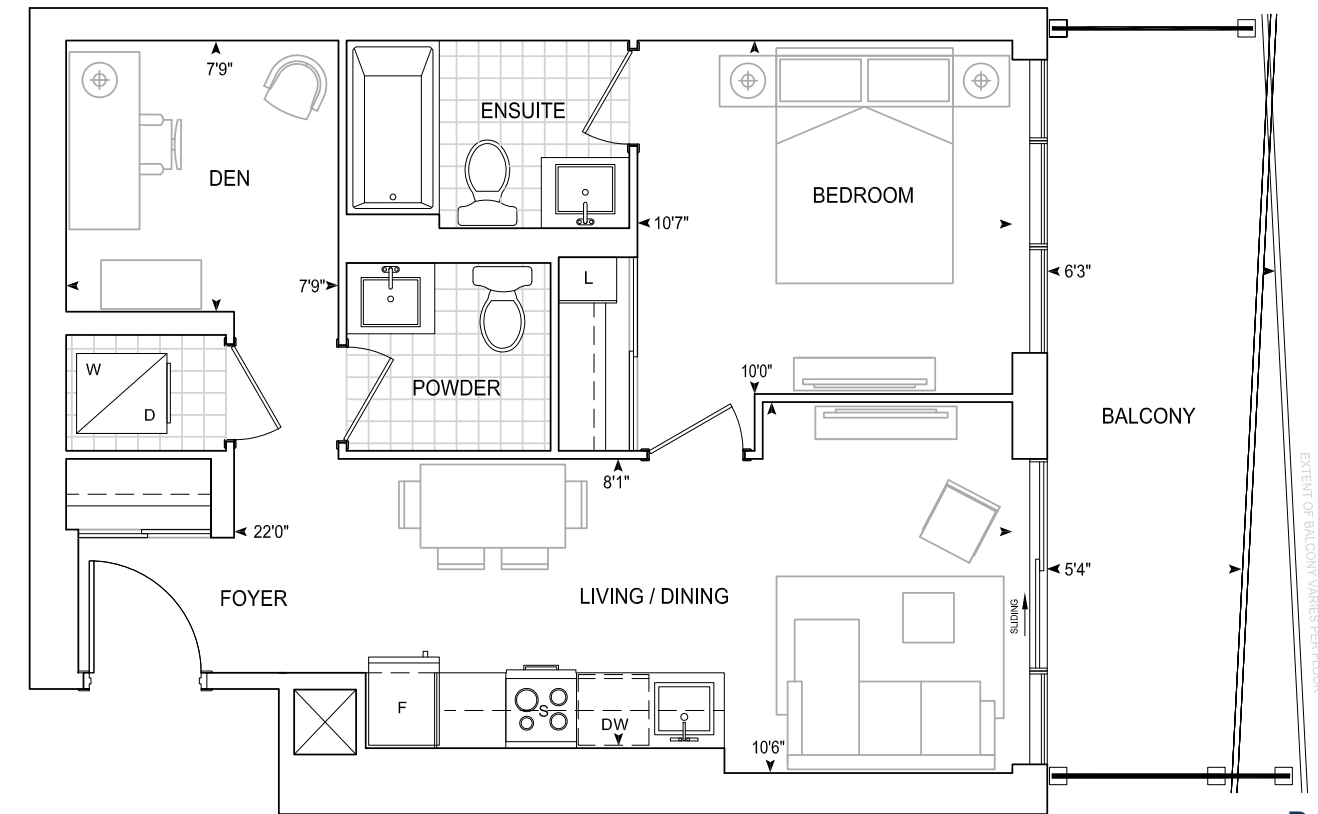
Dimensions, specifications, layouts, location of materials and fixtures, tile floor patterns and architectural detailing (including window size and location and door size, location and swing) are approximate only and are subject to change or modifications, without notice. Actual usable floor space varies from stated floor area. Orientation of suite may be reverse and Purchaser agrees to accept same. Balconies, terraces and patios are exclusive use common elements shown for display purposes only and location and size are subject to change without notice. All illustrations are artist concept only. The provisions of Schedule "X" of this Agreement, including Section 6 and 38 apply to this Schedule. E. & O.E. April 2024

# B614

**1 BEDROOM + DEN**

**Exterior A 122 sq.ft. Interior 614 sq.ft. Total 736 sq.ft.**  
**Exterior B 138 sq.ft. Interior 614 sq.ft. Total 752 sq.ft.**

**A**  
**Ext. A Floors:**  
 6-10, 17-21, 25-29



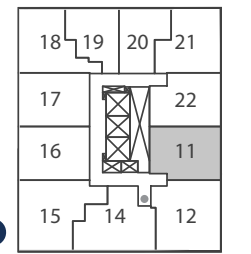
**B**  
**Ext. B Floors:**  
 5, 11-12, 14-16, 22-24

**9' CEILINGS**  
**FLOORS 5-10, 12, 14-21, 23-28**

**THOMPSON SERIES 10' CEILINGS**  
**FLOORS 11, 22, 29**



Dimensions, specifications, layouts, location of materials and fixtures, tile floor patterns and architectural detailing (including window size and location and door size, location and swing) are approximate only and are subject to change or modifications, without notice. Actual usable floor space varies from stated floor area. Orientation of suite may be reverse and Purchaser agrees to accept same. Balconies, terraces and patios are exclusive use common elements shown for display purposes only and location and size are subject to change without notice. All illustrations are artist concept only. The provisions of Schedule "X" of this Agreement, including Section 6 and 38 apply to this Schedule. E. & O.E. April 2024

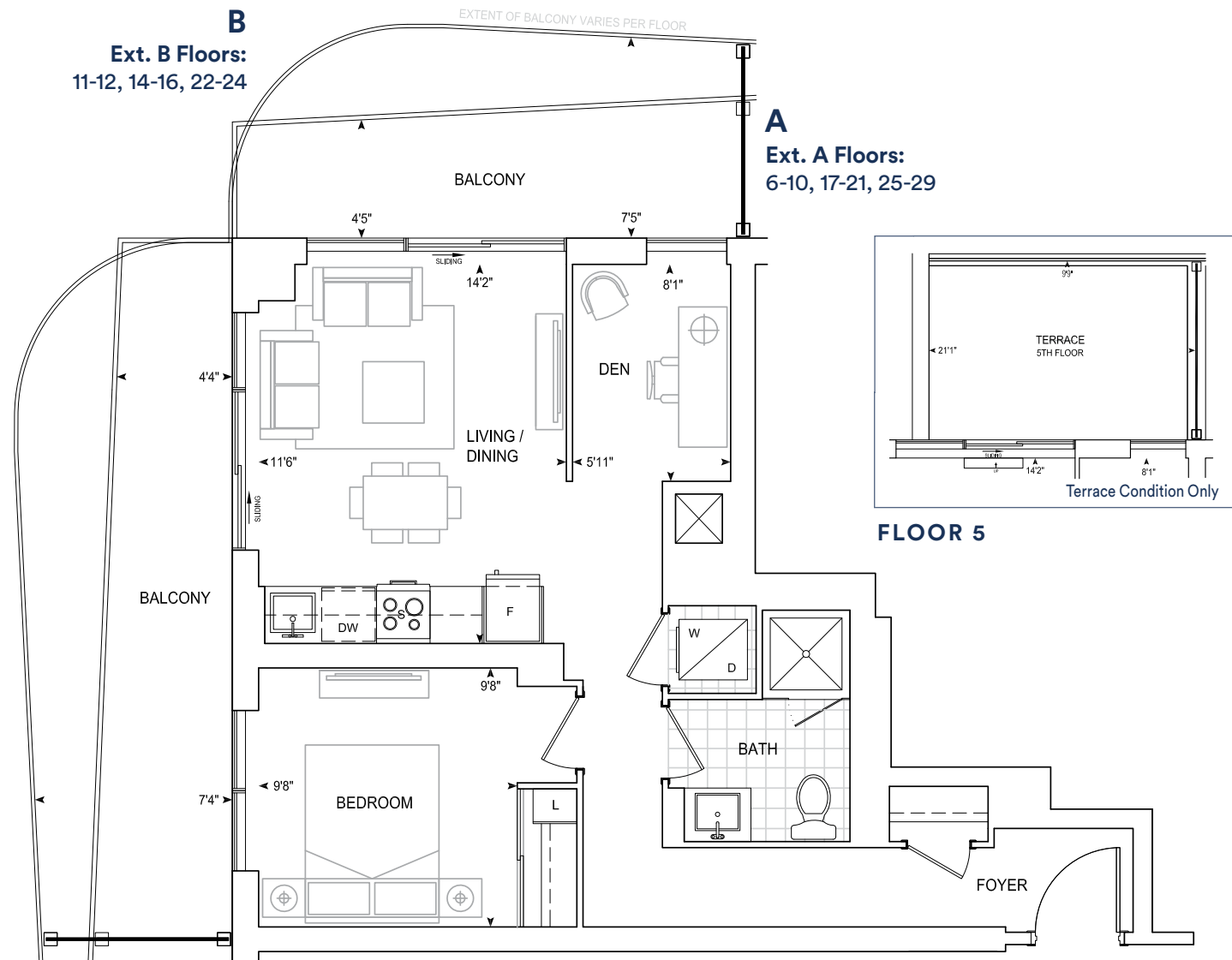


**FLOORS**  
 5-12, 14-29

# B626

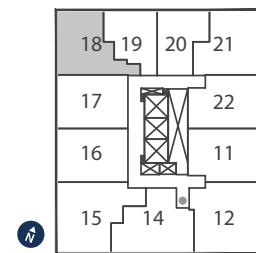
**1 BEDROOM + DEN**

**Exterior A 254 sq.ft. Interior 626 sq.ft. Total 880 sq.ft.**  
**Exterior B 272 sq.ft. Interior 626 sq.ft. Total 898 sq.ft.**  
**Terrace 329 sq.ft. Interior 626 sq.ft. Total 955 sq.ft.**



**9' CEILINGS**  
**FLOORS 5-10, 12, 14-21, 23-28**

**THOMPSON SERIES 10' CEILINGS**  
**FLOORS 11, 22, 29**



**FLOORS**  
**5-12, 14-29**

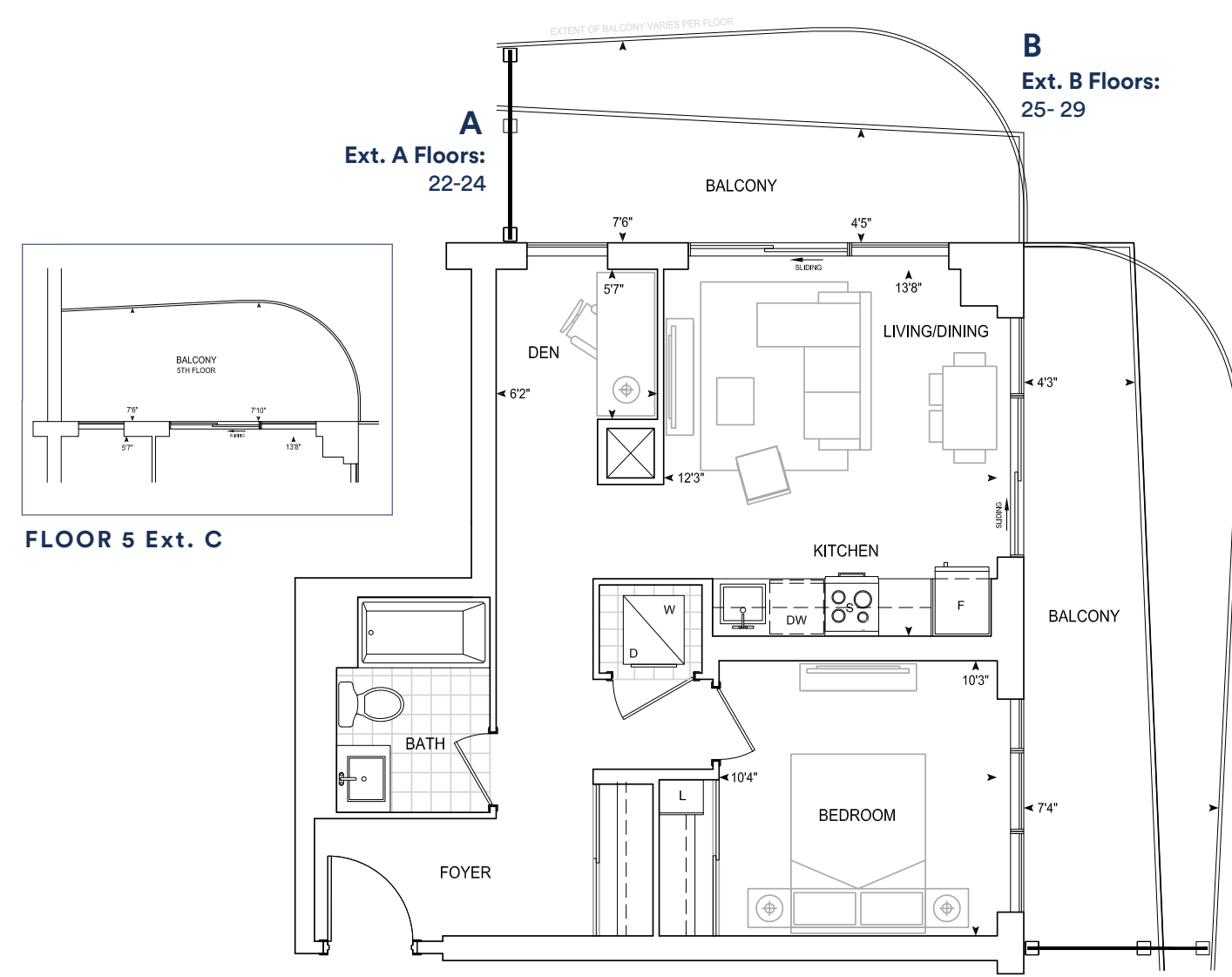


Dimensions, specifications, layouts, location of materials and fixtures, tile floor patterns and architectural detailing (including window size and location and door size, location and swing) are approximate only and are subject to change or modifications, without notice. Actual usable floor space varies from stated floor area. Orientation of suite may be reverse and Purchaser agrees to accept same. Balconies, terraces and patios are exclusive use common elements shown for display purposes only and location and size are subject to change without notice. All illustrations are artist concept only. The provisions of Schedule "X" of this Agreement, including Section 6 and 38 apply to this Schedule. E. & O.E. April 2024

# B627

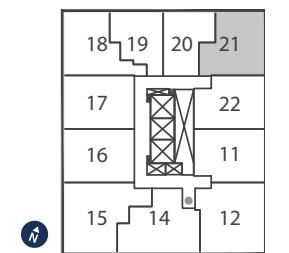
**1 BEDROOM + DEN**

**Exterior A 261 sq.ft. Interior 627 sq.ft. Total 888 sq.ft.**  
**Exterior B 275 sq.ft. Interior 627 sq.ft. Total 902 sq.ft.**  
**Exterior C 257 sq.ft. Interior 627 sq.ft. Total 884 sq.ft.**



**9' CEILINGS**  
**FLOORS 5, 23-28**

**THOMPSON SERIES 10' CEILINGS**  
**FLOORS 22, 29**



**FLOORS**  
**5, 22-29**

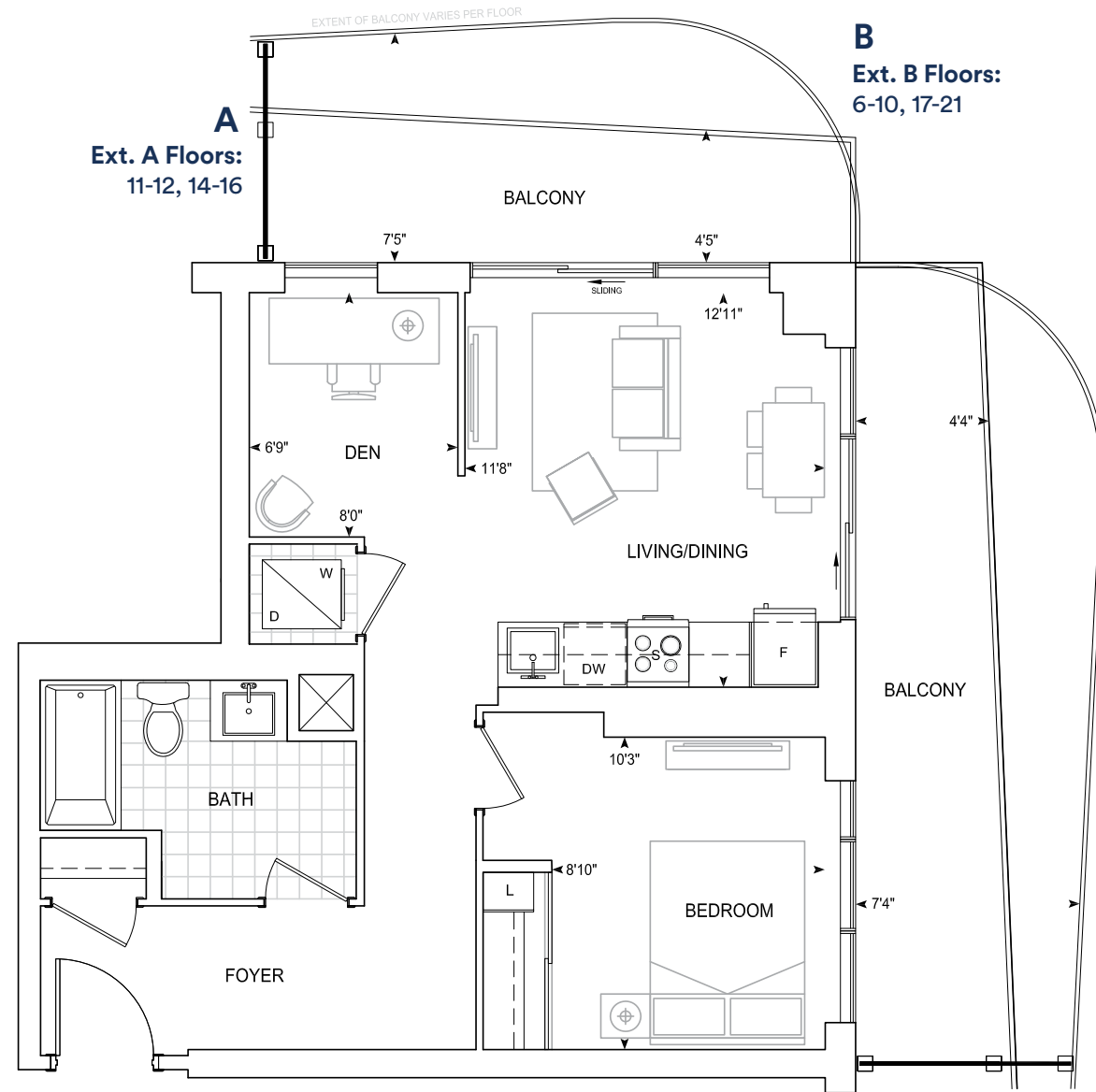


Dimensions, specifications, layouts, location of materials and fixtures, tile floor patterns and architectural detailing (including window size and location and door size, location and swing) are approximate only and are subject to change or modifications, without notice. Actual usable floor space varies from stated floor area. Orientation of suite may be reverse and Purchaser agrees to accept same. Balconies, terraces and patios are exclusive use common elements shown for display purposes only and location and size are subject to change without notice. All illustrations are artist concept only. The provisions of Schedule "X" of this Agreement, including Section 6 and 38 apply to this Schedule. E. & O.E. April 2024

# B627 BF

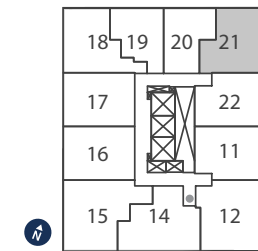
**1 BEDROOM + DEN**  
Barrier Free

**Exterior A 261 sq.ft. Interior 627 sq.ft. Total 888 sq.ft.**  
**Exterior B 275 sq.ft. Interior 627 sq.ft. Total 902 sq.ft.**



**9' CEILINGS**  
FLOORS 6-10, 12, 14-21

**THOMPSON SERIES** 10' CEILINGS  
FLOORS 11



**FLOORS**  
6-12, 14-21

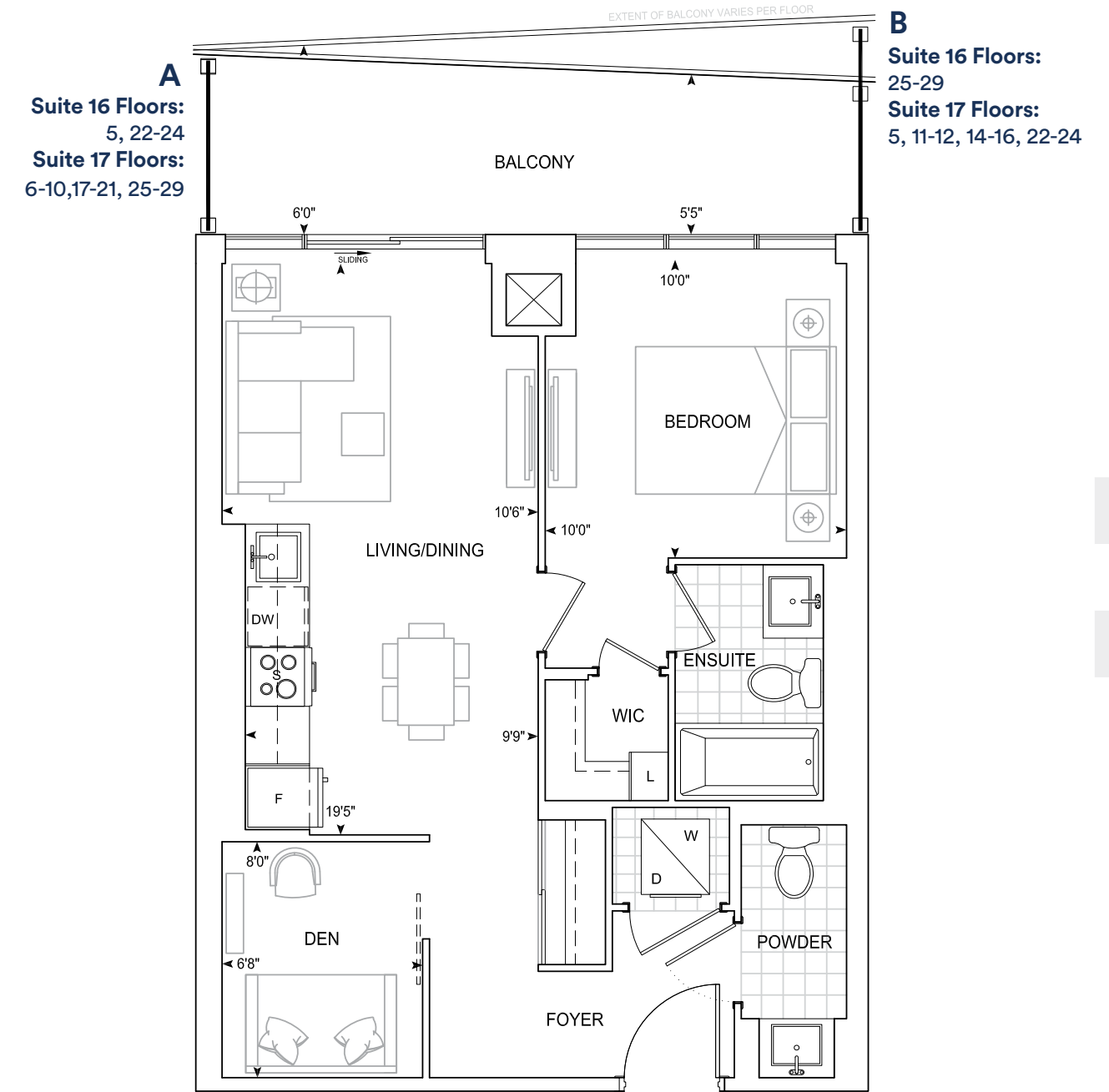


Dimensions, specifications, layouts, location of materials and fixtures, tile floor patterns and architectural detailing (including window size and location and door size, location and swing) are approximate only and are subject to change or modifications, without notice. Actual usable floor space varies from stated floor area. Orientation of suite may be reverse and Purchaser agrees to accept same. Balconies, terraces and patios are exclusive use common elements shown for display purposes only and location and size are subject to change without notice. All illustrations are artist concept only. The provisions of Schedule "X" of this Agreement, including Section 6 and 38 apply to this Schedule. E. & O.E. April 2024

# B637

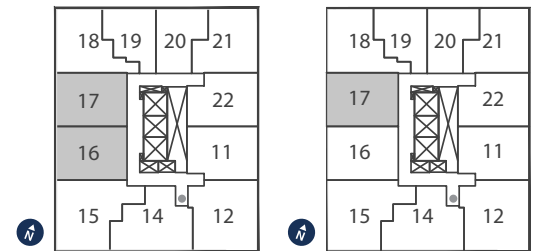
**1 BEDROOM + DEN**

**Exterior A 122 sq.ft. Interior 637 sq.ft. Total 759 sq.ft.**  
**Exterior B 141 sq.ft. Interior 637 sq.ft. Total 778 sq.ft.**



**9' CEILINGS**  
FLOORS 6-10, 12, 14-21, 23-28

**THOMPSON SERIES** 10' CEILINGS  
FLOORS 11, 22, 29



**FLOORS**  
5, 22-29

**FLOORS**  
6-12, 14-21

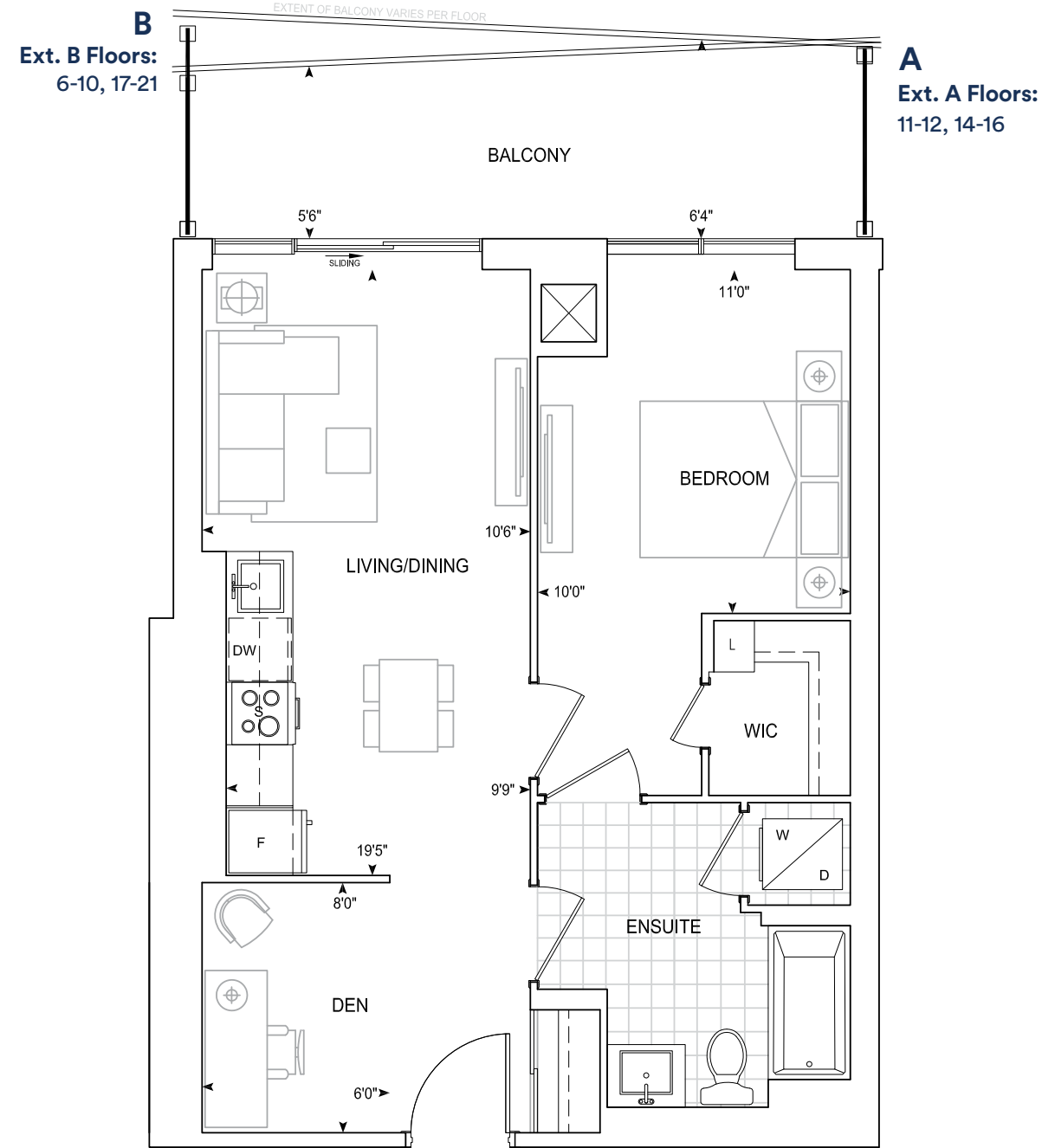


Dimensions, specifications, layouts, location of materials and fixtures, tile floor patterns and architectural detailing (including window size and location and door size, location and swing) are approximate only and are subject to change or modifications, without notice. Actual usable floor space varies from stated floor area. Orientation of suite may be reverse and Purchaser agrees to accept same. Balconies, terraces and patios are exclusive use common elements shown for display purposes only and location and size are subject to change without notice. All illustrations are artist concept only. The provisions of Schedule "X" of this Agreement, including Section 6 and 38 apply to this Schedule. E. & O.E. April 2024

# B637 BF

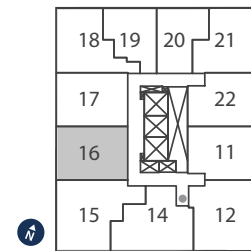
**1 BEDROOM + DEN**  
Barrier Free

**Exterior A 122 sq.ft. Interior 637 sq.ft. Total 759 sq.ft.**  
**Exterior B 141 sq.ft. Interior 637 sq.ft. Total 750 sq.ft.**



**9' CEILINGS**  
FLOORS 6-10, 12, 14-21

**THOMPSON SERIES 10' CEILINGS**  
FLOORS 11



**FLOORS 6-12, 14-20**

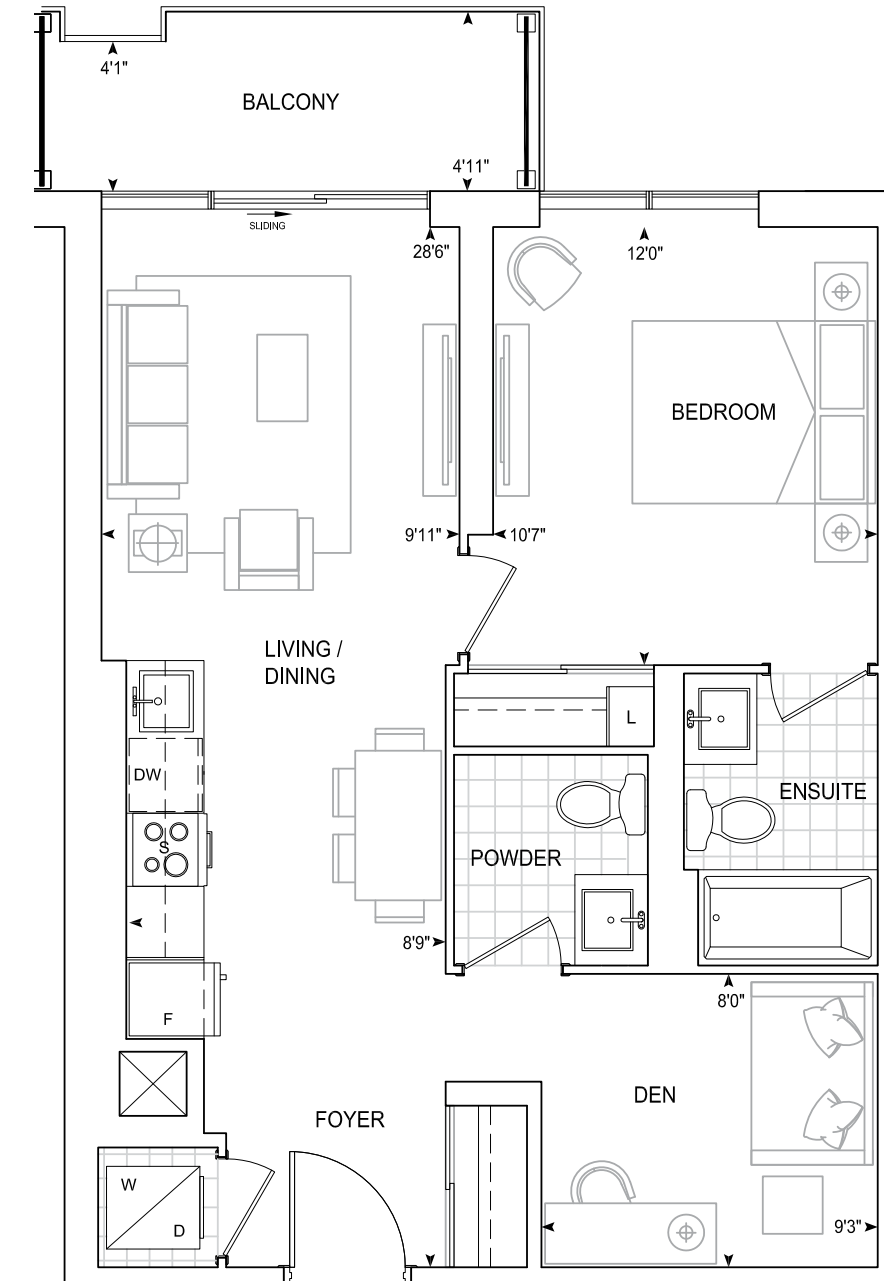


Dimensions, specifications, layouts, location of materials and fixtures, tile floor patterns and architectural detailing (including window size and location and door size, location and swing) are approximate only and are subject to change or modifications, without notice. Actual usable floor space varies from stated floor area. Orientation of suite may be reverse and Purchaser agrees to accept same. Balconies, terraces and patios are exclusive use common elements shown for display purposes only and location and size are subject to change without notice. All illustrations are artist concept only. The provisions of Schedule "X" of this Agreement, including Section 6 and 38 apply to this Schedule. E. & O.E. April 2024

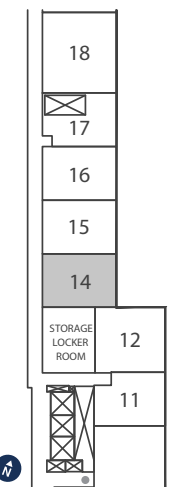
# B651

**1 BEDROOM + DEN**

**Exterior 61 sq.ft. Interior 651 sq.ft. Total 712 sq.ft.**



**9' CEILINGS**  
FLOOR 3



**FLOOR 3**

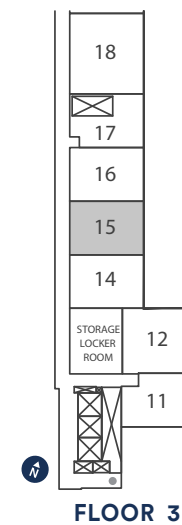
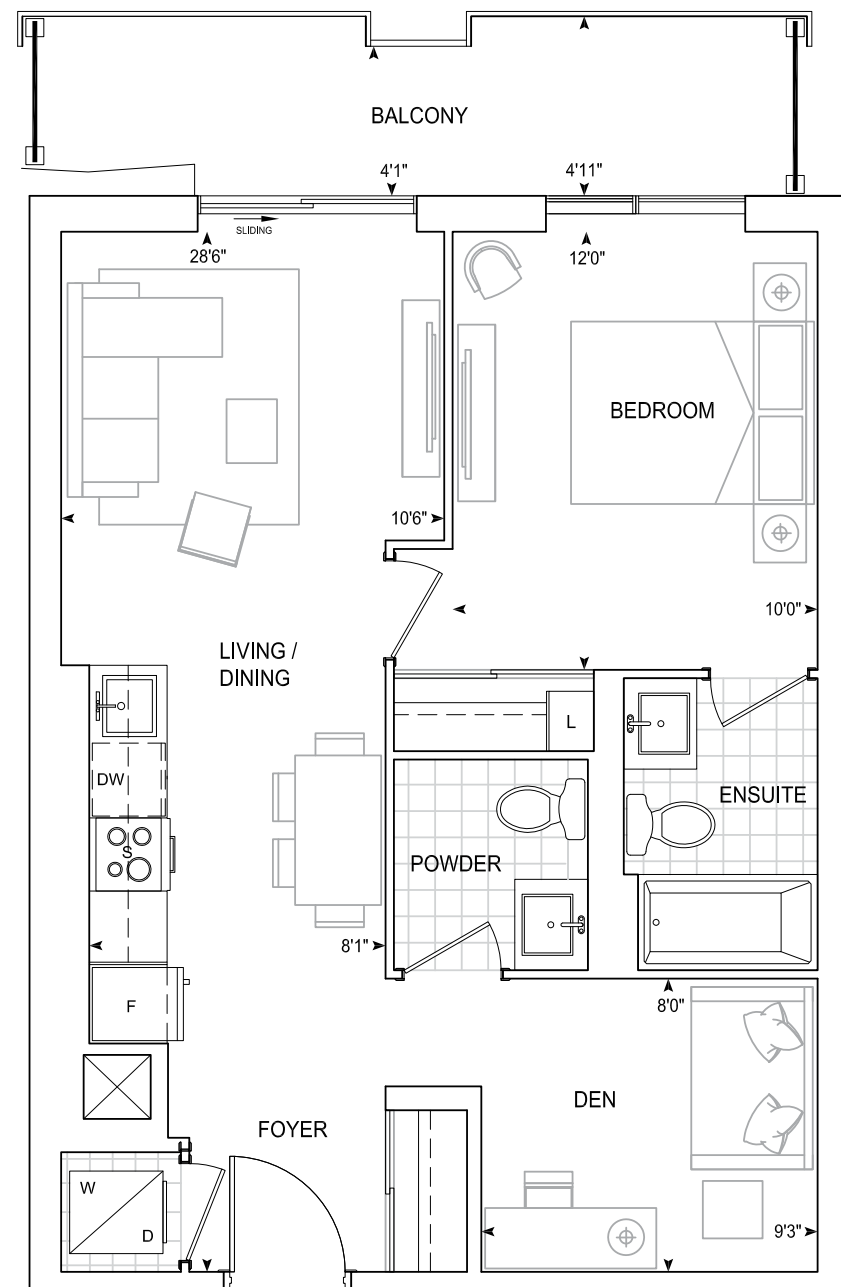


Dimensions, specifications, layouts, location of materials and fixtures, tile floor patterns and architectural detailing (including window size and location and door size, location and swing) are approximate only and are subject to change or modifications, without notice. Actual usable floor space varies from stated floor area. Orientation of suite may be reverse and Purchaser agrees to accept same. Balconies, terraces and patios are exclusive use common elements shown for display purposes only and location and size are subject to change without notice. All illustrations are artist concept only. The provisions of Schedule "X" of this Agreement, including Section 6 and 38 apply to this Schedule. E. & O.E. April 2024

# B654

1 BEDROOM + DEN

Exterior 93 sq.ft. Interior 654 sq.ft. Total 747 sq.ft.



9' CEILINGS  
FLOOR 3

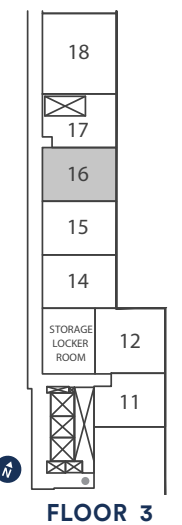
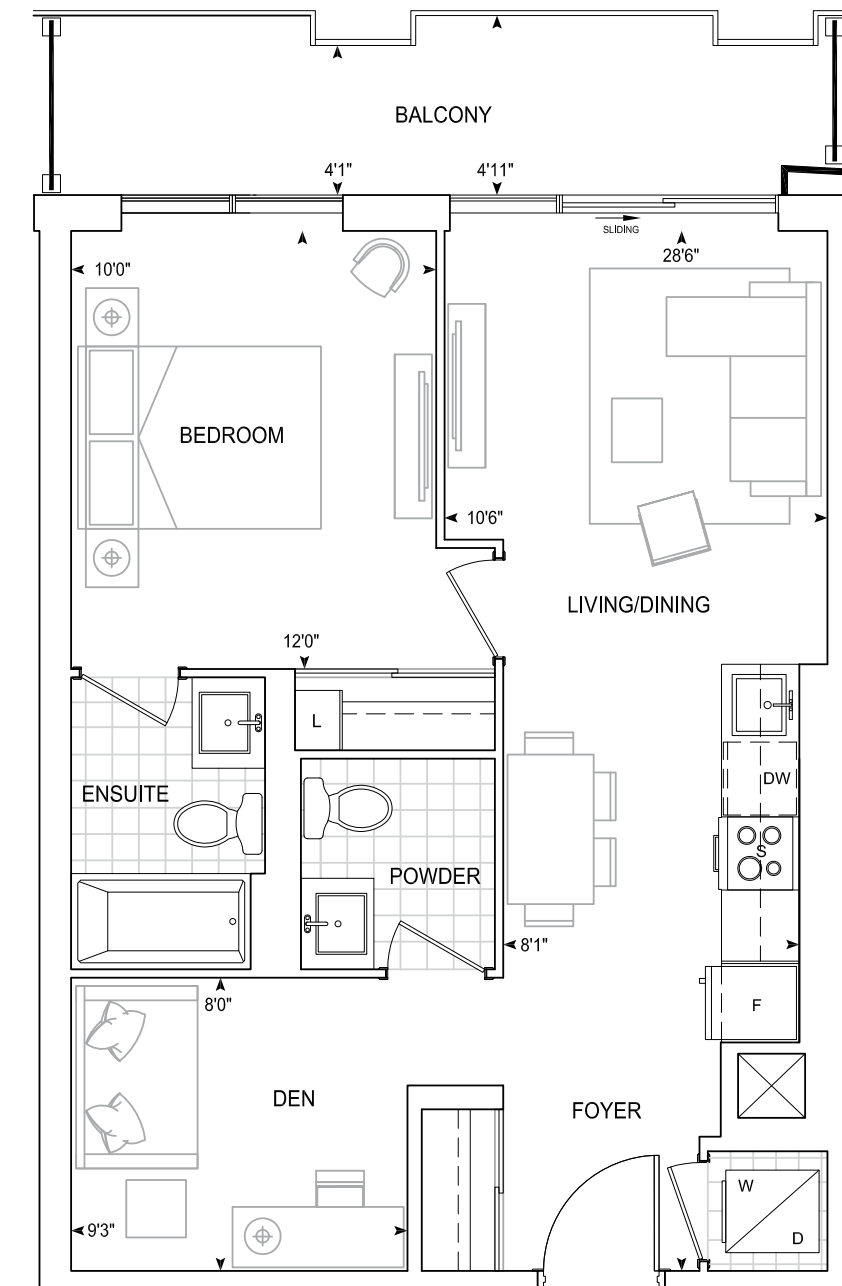


Dimensions, specifications, layouts, location of materials and fixtures, tile floor patterns and architectural detailing (including window size and location and door size, location and swing) are approximate only and are subject to change or modifications, without notice. Actual usable floor space varies from stated floor area. Orientation of suite may be reverse and Purchaser agrees to accept same. Balconies, terraces and patios are exclusive use common elements shown for display purposes only and location and size are subject to change without notice. All illustrations are artist concept only. The provisions of Schedule "X" of this Agreement, including Section 6 and 38 apply to this Schedule. E. & O.E. April 2024

# B657

1 BEDROOM + DEN

Exterior 97 sq.ft. Interior 657 sq.ft. Total 754 sq.ft.



9' CEILINGS  
FLOOR 3

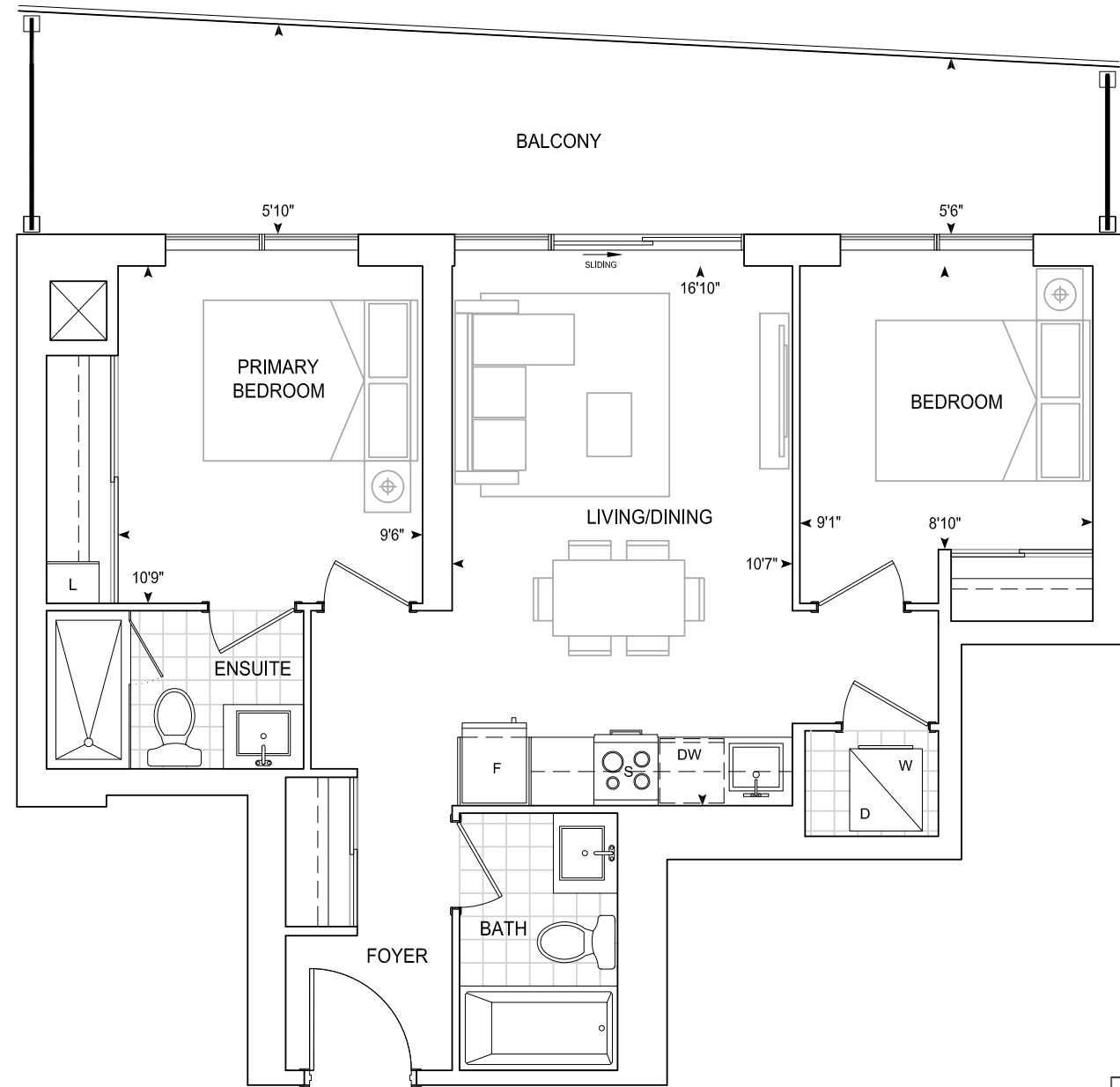


Dimensions, specifications, layouts, location of materials and fixtures, tile floor patterns and architectural detailing (including window size and location and door size, location and swing) are approximate only and are subject to change or modifications, without notice. Actual usable floor space varies from stated floor area. Orientation of suite may be reverse and Purchaser agrees to accept same. Balconies, terraces and patios are exclusive use common elements shown for display purposes only and location and size are subject to change without notice. All illustrations are artist concept only. The provisions of Schedule "X" of this Agreement, including Section 6 and 38 apply to this Schedule. E. & O.E. April 2024

# C703

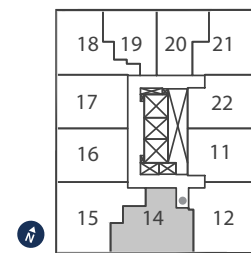
## 2 BEDROOM

Exterior 200 sq.ft. Interior 703 sq.ft. Total 903 sq.ft.



9' CEILINGS  
FLOORS 23-28

**THOMPSON SERIES** 10' CEILINGS  
FLOORS 22, 29



FLOORS  
22-29

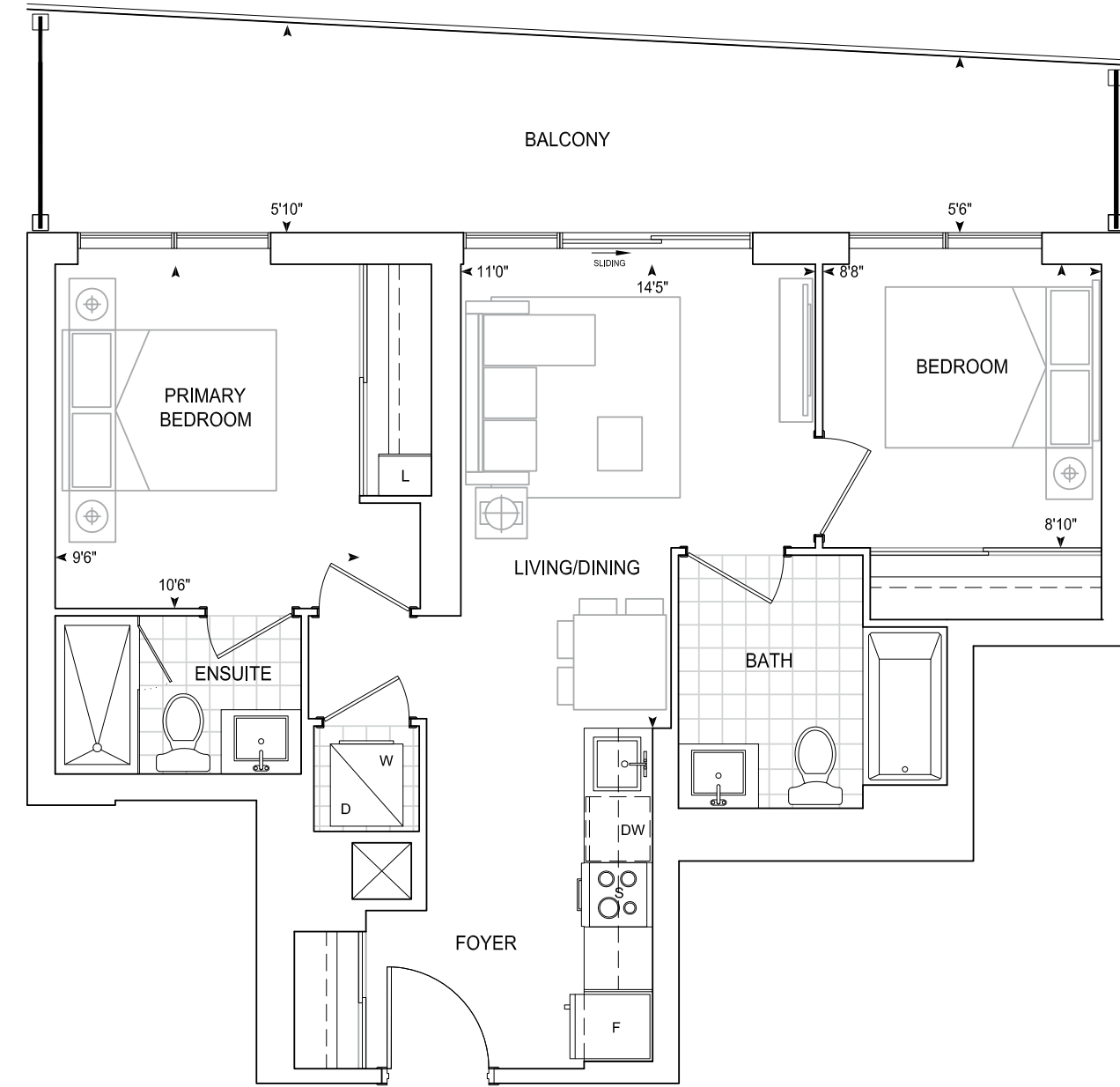


Dimensions, specifications, layouts, location of materials and fixtures, tile floor patterns and architectural detailing (including window size and location and door size, location and swing) are approximate only and are subject to change or modifications, without notice. Actual usable floor space varies from stated floor area. Orientation of suite may be reverse and Purchaser agrees to accept same. Balconies, terraces and patios are exclusive use common elements shown for display purposes only and location and size are subject to change without notice. All illustrations are artist concept only. The provisions of Schedule "X" of this Agreement, including Section 6 and 38 apply to this Schedule. E. & O.E. April 2024

# C703 BF

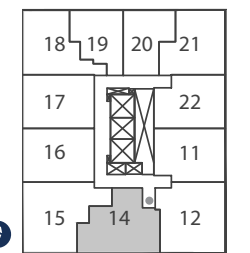
## 2 BEDROOM Barrier Free

Exterior 200 sq.ft. Interior 703 sq.ft. Total 903 sq.ft.



9' CEILINGS  
FLOORS 5-10, 12, 14-21

**THOMPSON SERIES** 10' CEILINGS  
FLOORS 11



FLOORS  
5-12, 14-21



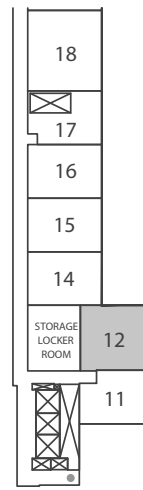
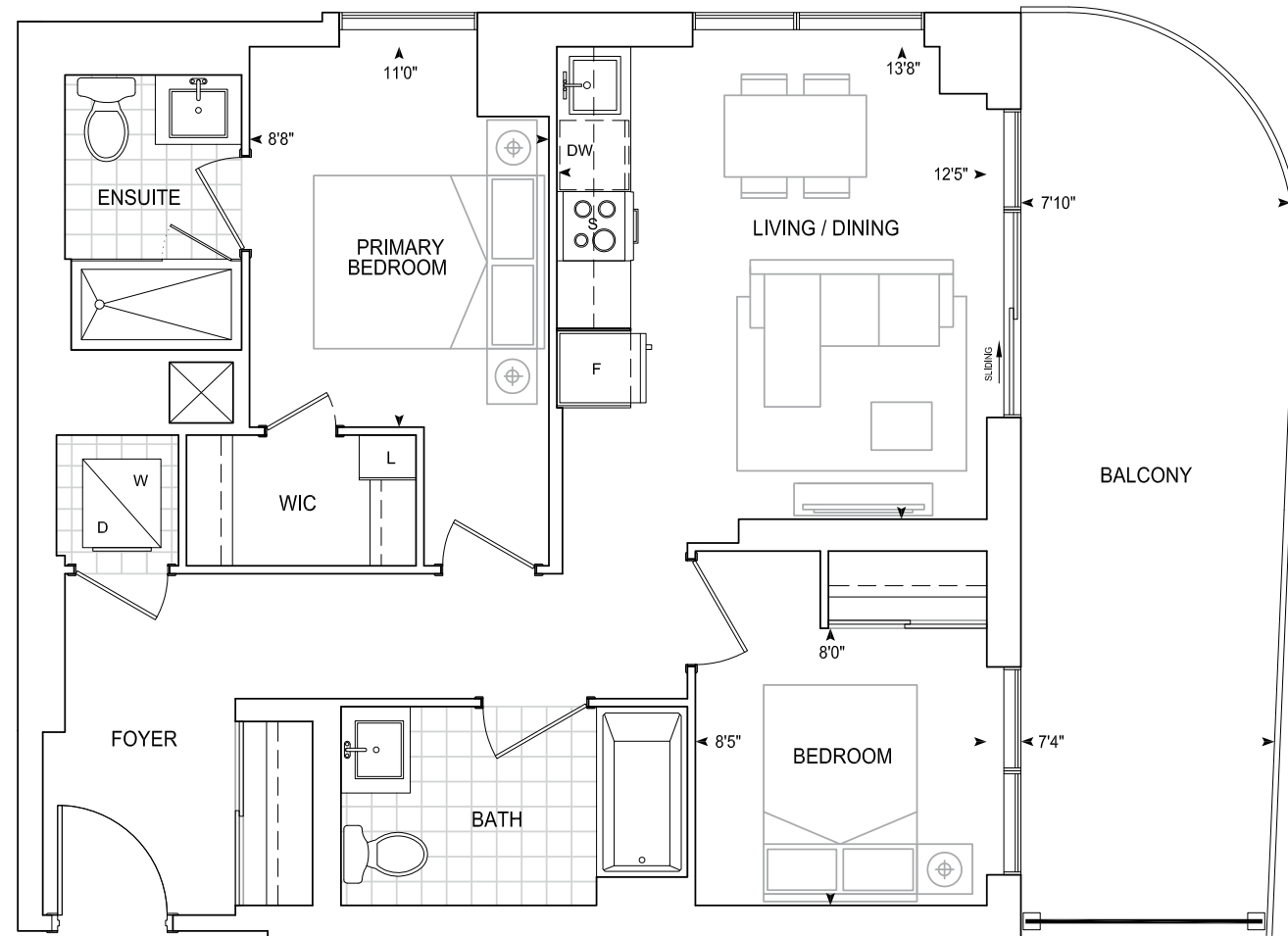
Dimensions, specifications, layouts, location of materials and fixtures, tile floor patterns and architectural detailing (including window size and location and door size, location and swing) are approximate only and are subject to change or modifications, without notice. Actual usable floor space varies from stated floor area. Orientation of suite may be reverse and Purchaser agrees to accept same. Balconies, terraces and patios are exclusive use common elements shown for display purposes only and location and size are subject to change without notice. All illustrations are artist concept only. The provisions of Schedule "X" of this Agreement, including Section 6 and 38 apply to this Schedule. E. & O.E. April 2024

# C759 BF

## 2 BEDROOM

Barrier Free

Exterior 187 sq.ft. Interior 759 sq.ft. Total 946 sq.ft.



FLOOR 3

9' CEILINGS  
FLOOR 3

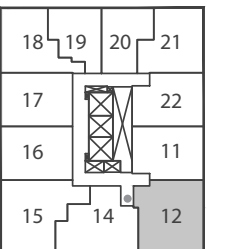
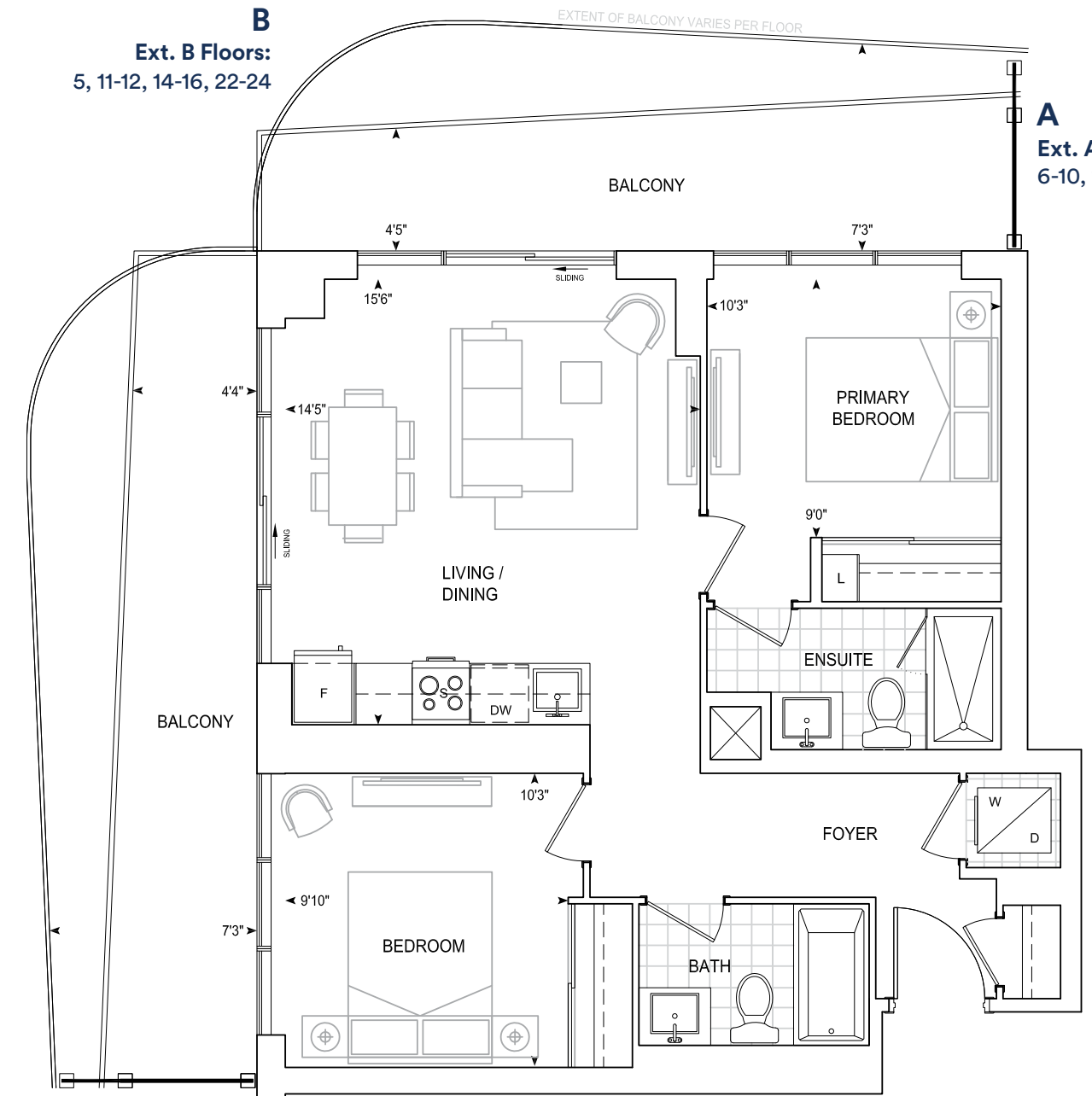


Dimensions, specifications, layouts, location of materials and fixtures, tile floor patterns and architectural detailing (including window size and location and door size, location and swing) are approximate only and are subject to change or modifications, without notice. Actual usable floor space varies from stated floor area. Orientation of suite may be reverse and Purchaser agrees to accept same. Balconies, terraces and patios are exclusive use common elements shown for display purposes only and location and size are subject to change without notice. All illustrations are artist concept only. The provisions of Schedule "X" of this Agreement, including Section 6 and 38 apply to this Schedule. E. & O.E. April 2024

# C778

## 2 BEDROOM

Exterior A 320 sq.ft. Interior 778 sq.ft. Total 1098 sq.ft.  
Exterior B 329 sq.ft. Interior 778 sq.ft. Total 1107 sq.ft.



FLOORS  
5-12, 14-29

9' CEILINGS  
FLOORS 5-10, 12, 14-21, 23-28

THOMPSON SERIES 10' CEILINGS  
FLOORS 11, 22, 29

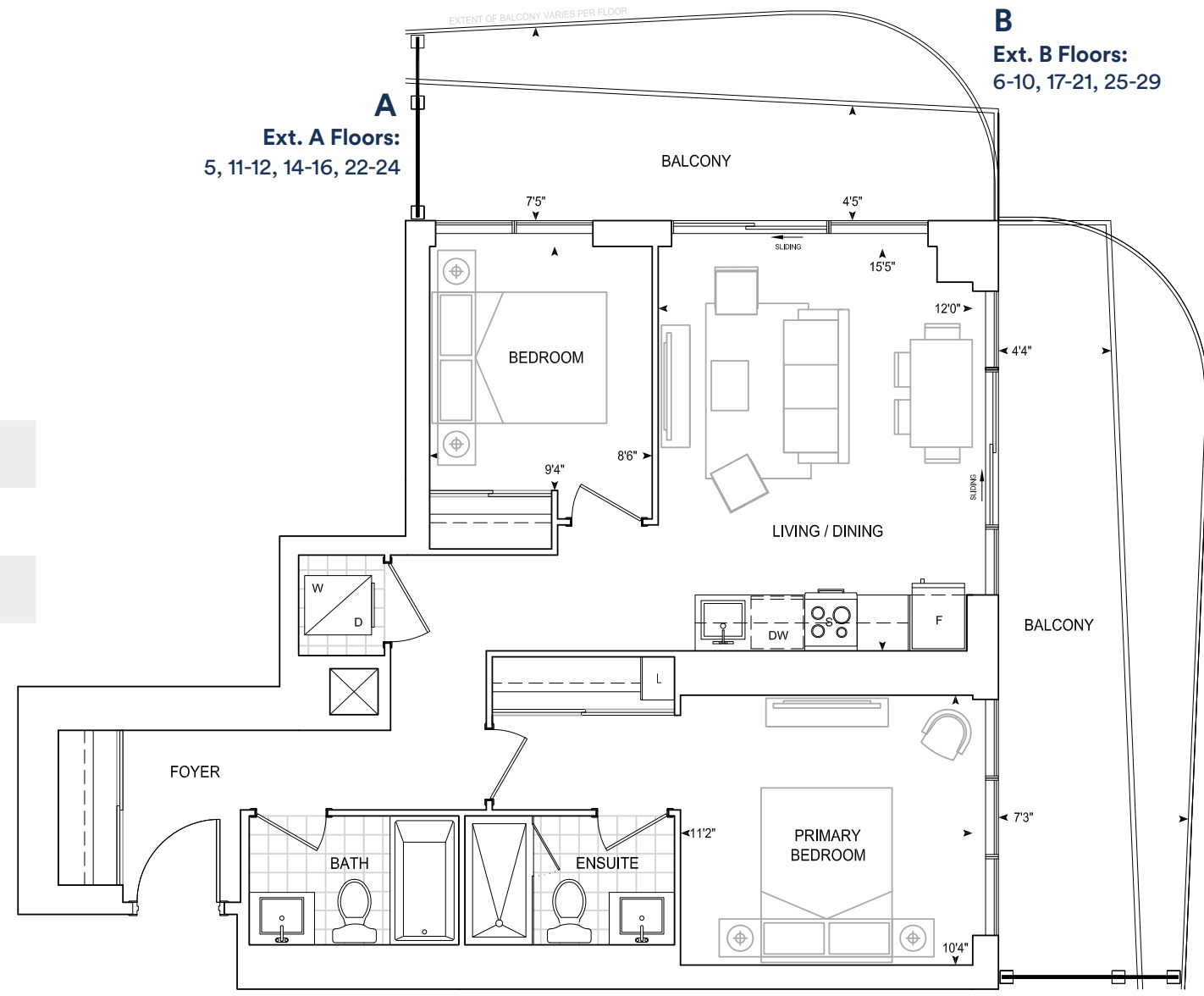


Dimensions, specifications, layouts, location of materials and fixtures, tile floor patterns and architectural detailing (including window size and location and door size, location and swing) are approximate only and are subject to change or modifications, without notice. Actual usable floor space varies from stated floor area. Orientation of suite may be reverse and Purchaser agrees to accept same. Balconies, terraces and patios are exclusive use common elements shown for display purposes only and location and size are subject to change without notice. All illustrations are artist concept only. The provisions of Schedule "X" of this Agreement, including Section 6 and 38 apply to this Schedule. E. & O.E. April 2024

# C804

## 2 BEDROOM

Exterior A 288 sq.ft. Interior 804 sq.ft. Total 1092 sq.ft.  
 Exterior B 306 sq.ft. Interior 804 sq.ft. Total 1110 sq.ft.

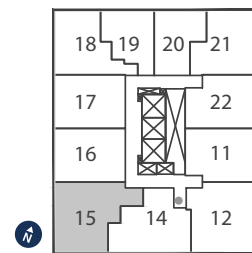


**A**  
 Ext. A Floors:  
 5, 11-12, 14-16, 22-24

**B**  
 Ext. B Floors:  
 6-10, 17-21, 25-29

9' CEILINGS  
 FLOORS 5-10, 12, 14-21, 23-28

THOMPSON SERIES 10' CEILINGS  
 FLOORS 11, 22, 29



FLOORS  
 5-12, 14-29

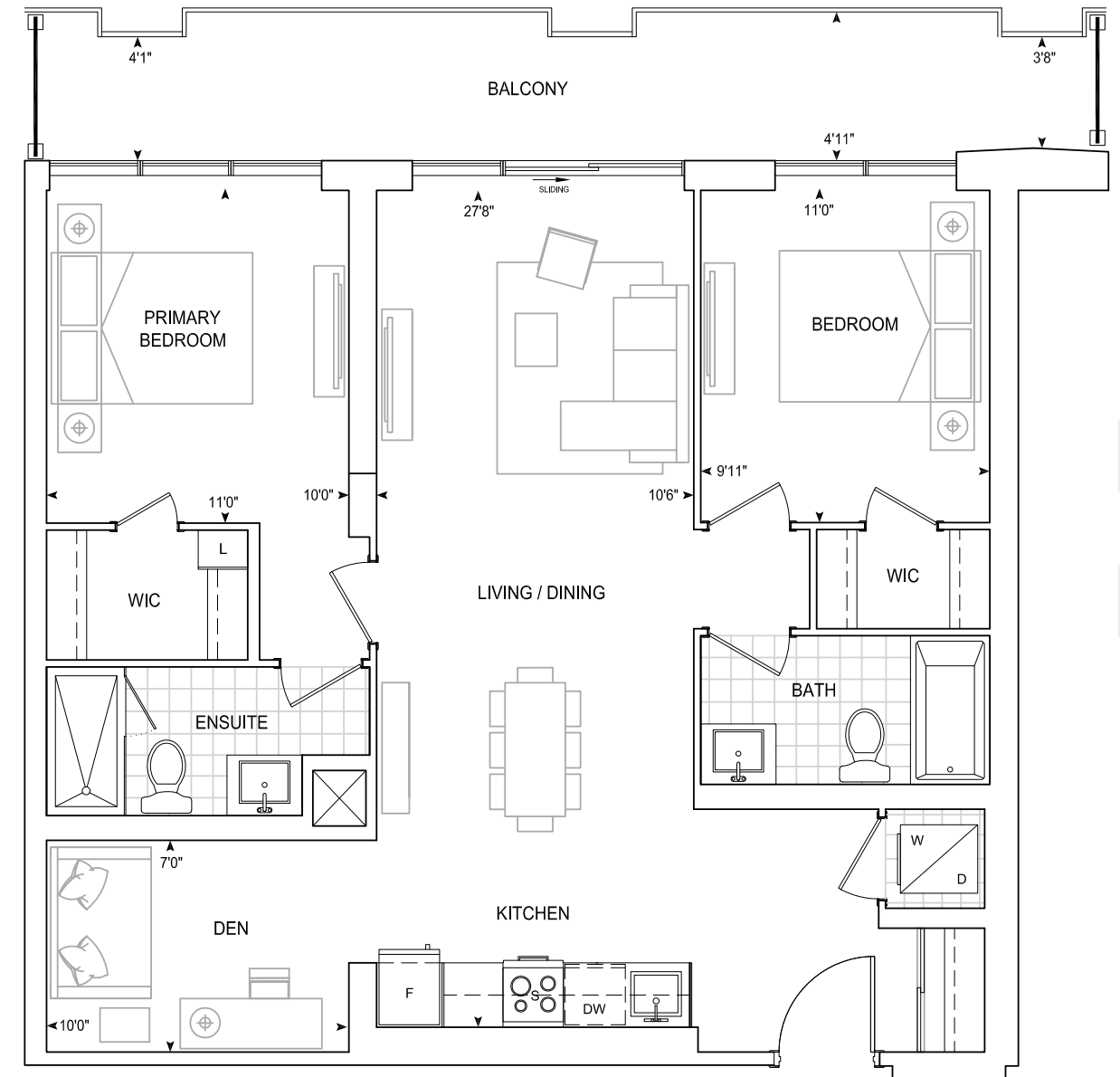


Dimensions, specifications, layouts, location of materials and fixtures, tile floor patterns and architectural detailing (including window size and location and door size, location and swing) are approximate only and are subject to change or modifications, without notice. Actual usable floor space varies from stated floor area. Orientation of suite may be reverse and Purchaser agrees to accept same. Balconies, terraces and patios are exclusive use common elements shown for display purposes only and location and size are subject to change without notice. All illustrations are artist concept only. The provisions of Schedule "X" of this Agreement, including Section 6 and 38 apply to this Schedule. E. & O.E. April 2024

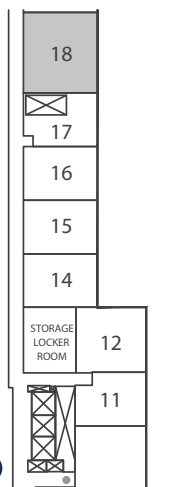
# D999

## 2 BEDROOM + DEN

Exterior 161 sq.ft. Interior 999 sq.ft. Total 1160 sq.ft.



9' CEILINGS  
 FLOOR 3



FLOOR 3

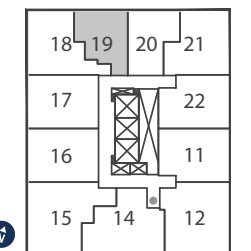
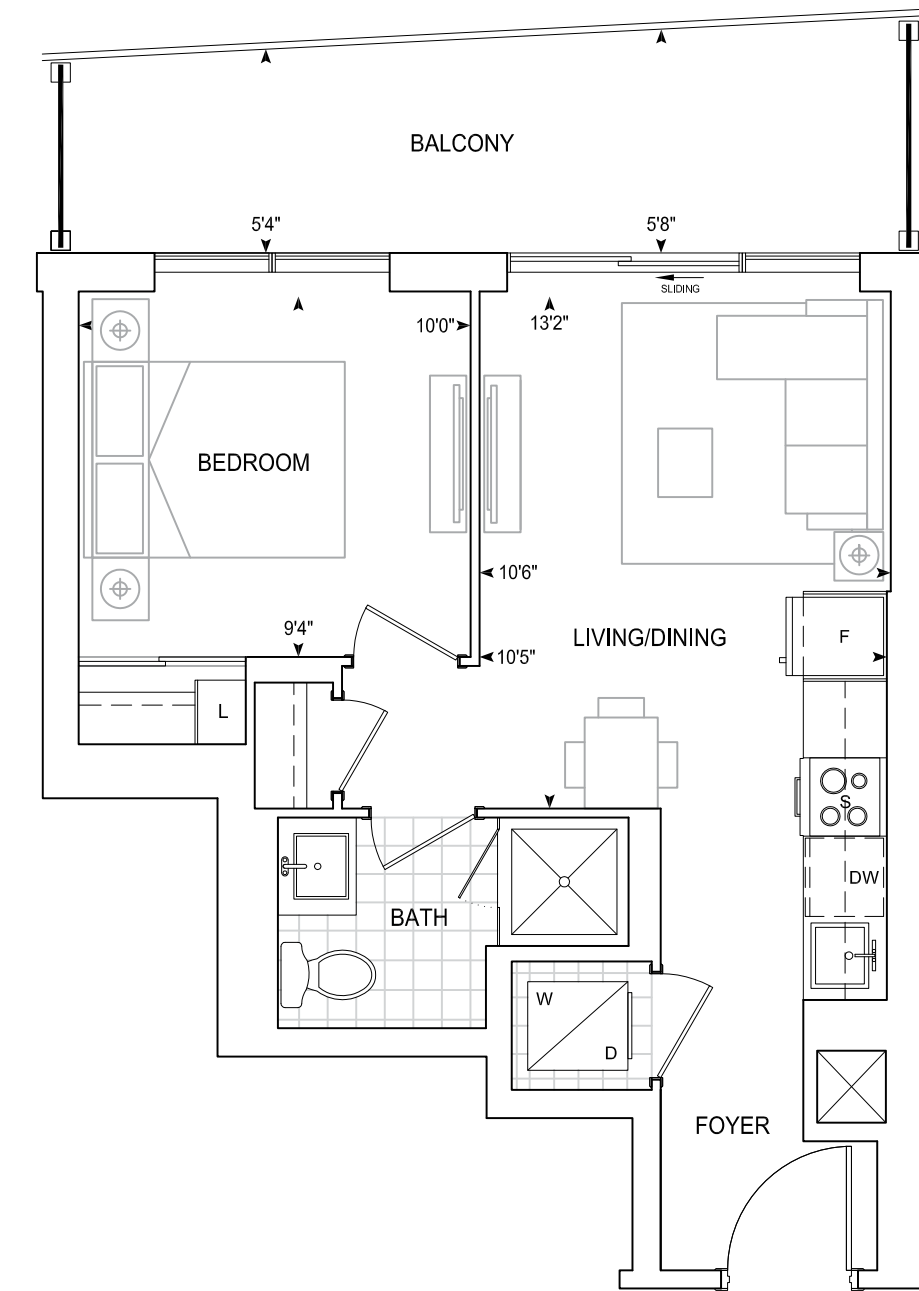


Dimensions, specifications, layouts, location of materials and fixtures, tile floor patterns and architectural detailing (including window size and location and door size, location and swing) are approximate only and are subject to change or modifications, without notice. Actual usable floor space varies from stated floor area. Orientation of suite may be reverse and Purchaser agrees to accept same. Balconies, terraces and patios are exclusive use common elements shown for display purposes only and location and size are subject to change without notice. All illustrations are artist concept only. The provisions of Schedule "X" of this Agreement, including Section 6 and 38 apply to this Schedule. E. & O.E. April 2024

# Penthouse Suites

**A462 PH**  
**1 BEDROOM**

**Exterior 119 sq.ft. Interior 462 sq.ft. Total 581 sq.ft.**



**PENTHOUSE**

**PENTHOUSE 10' CEILINGS**



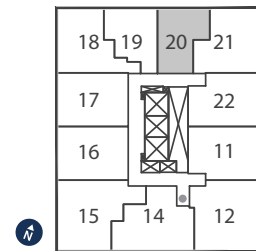
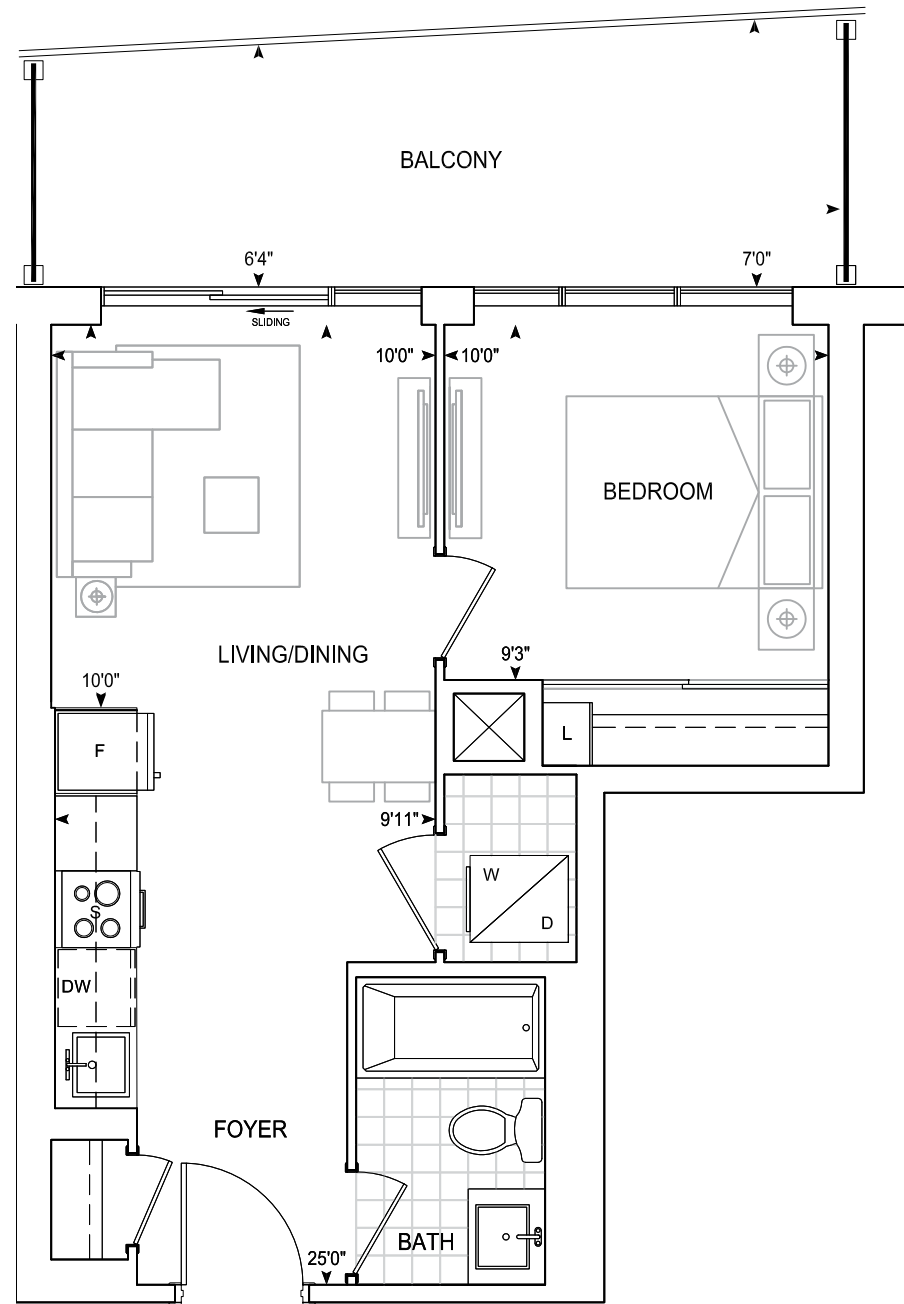
Dimensions, specifications, layouts, location of materials and fixtures, tile floor patterns and architectural detailing (including window size and location and door size, location and swing) are approximate only and are subject to change or modifications, without notice. Actual usable floor space varies from stated floor area. Orientation of suite may be reverse and Purchaser agrees to accept same. Balconies, terraces and patios are exclusive use common elements shown for display purposes only and location and size are subject to change without notice. All illustrations are artist concept only. The provisions of Schedule "X" of this Agreement, including Section 6 and 38 apply to this Schedule. E. & O.E. April 2024

\*artist's impression

# A475 PH

## 1 BEDROOM

Exterior 140 sq.ft. Interior 475 sq.ft. Total 615 sq.ft.



PENTHOUSE

**PENTHOUSE** 10' CEILINGS

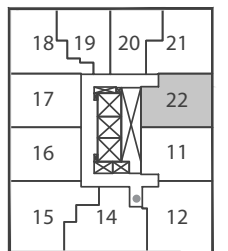
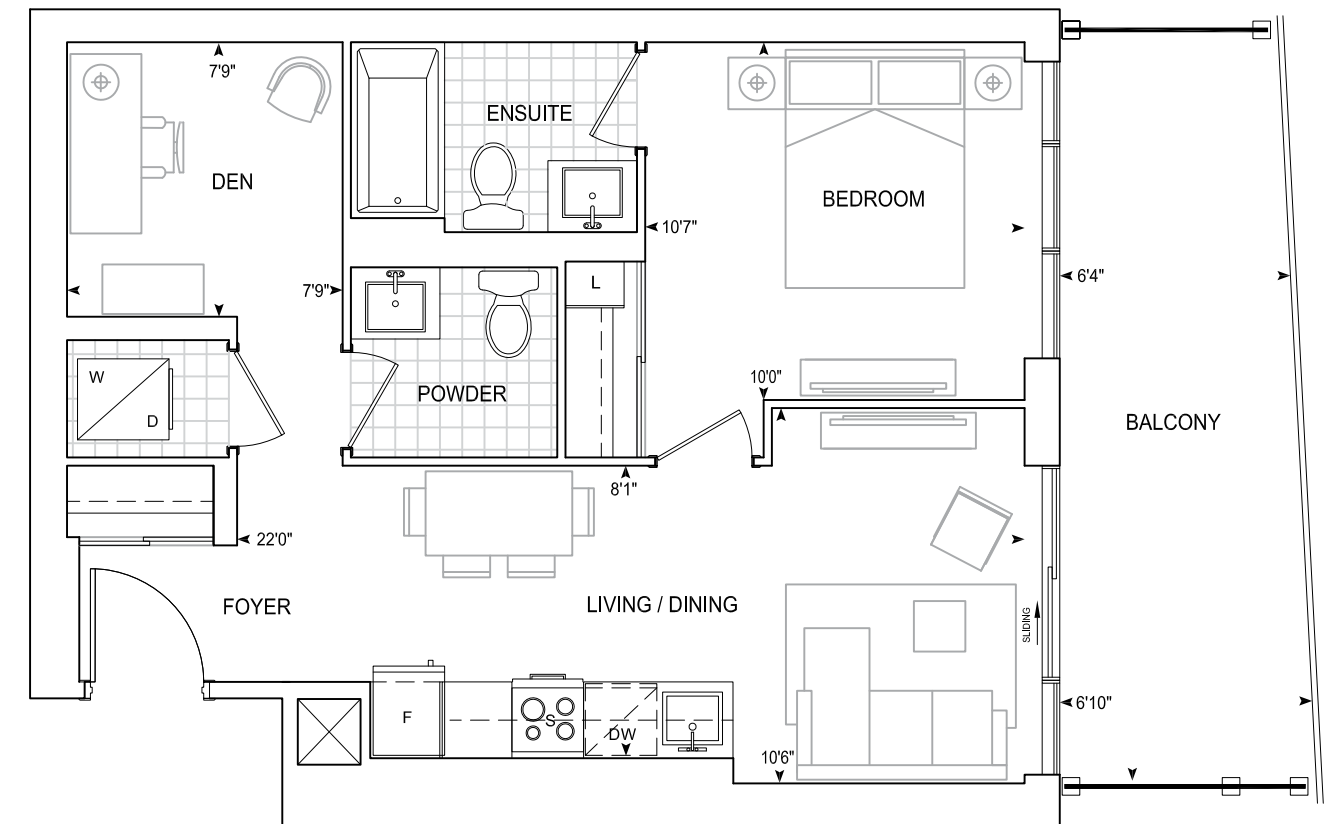


Dimensions, specifications, layouts, location of materials and fixtures, tile floor patterns and architectural detailing (including window size and location and door size, location and swing) are approximate only and are subject to change or modifications, without notice. Actual usable floor space varies from stated floor area. Orientation of suite may be reverse and Purchaser agrees to accept same. Balconies, terraces and patios are exclusive use common elements shown for display purposes only and location and size are subject to change without notice. All illustrations are artist concept only. The provisions of Schedule "X" of this Agreement, including Section 6 and 38 apply to this Schedule. E. & O.E. April 2024

# B595 PH

## 1 BEDROOM + DEN

Exterior 119 sq.ft. Interior 595 sq.ft. Total 714 sq.ft.



PENTHOUSE

**PENTHOUSE** 10' CEILINGS

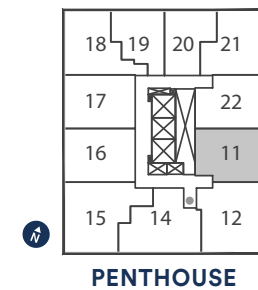
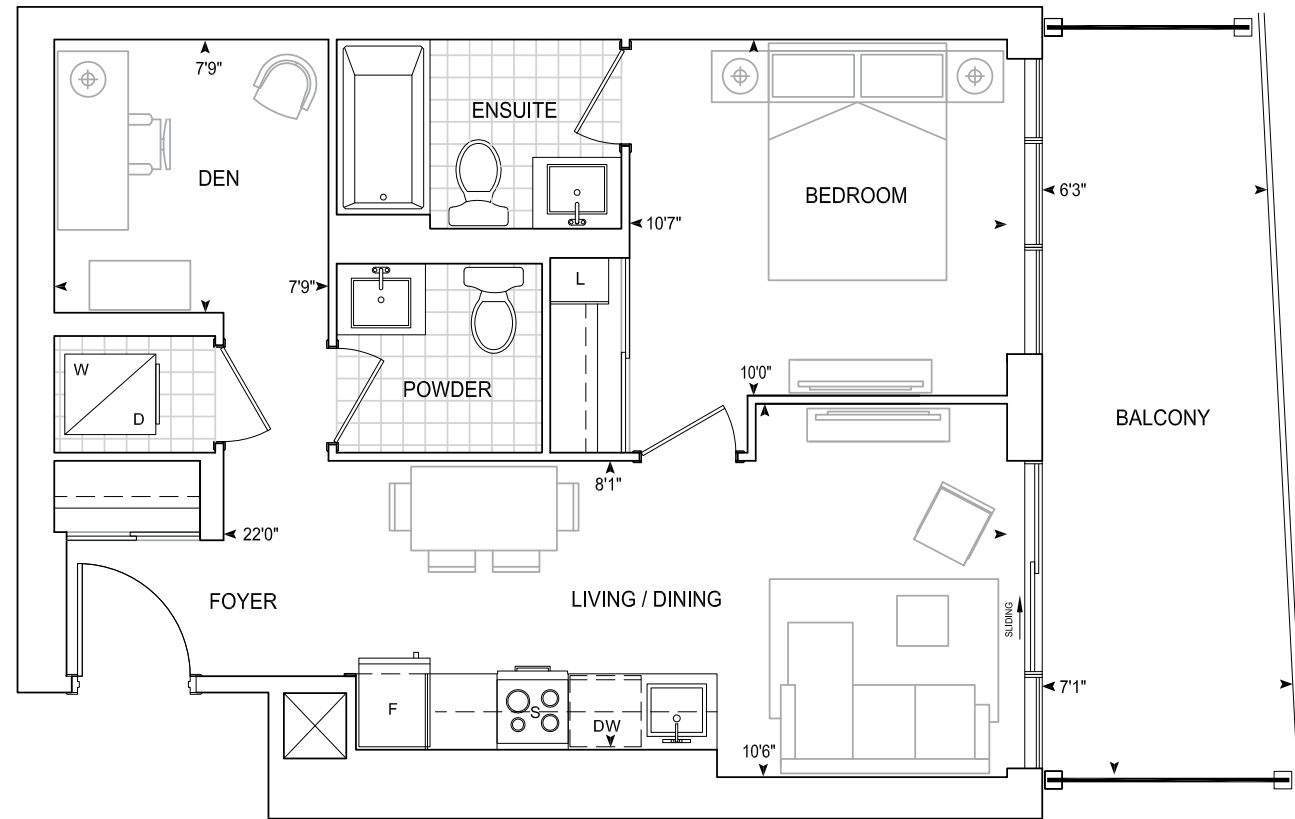


Dimensions, specifications, layouts, location of materials and fixtures, tile floor patterns and architectural detailing (including window size and location and door size, location and swing) are approximate only and are subject to change or modifications, without notice. Actual usable floor space varies from stated floor area. Orientation of suite may be reverse and Purchaser agrees to accept same. Balconies, terraces and patios are exclusive use common elements shown for display purposes only and location and size are subject to change without notice. All illustrations are artist concept only. The provisions of Schedule "X" of this Agreement, including Section 6 and 38 apply to this Schedule. E. & O.E. April 2024

# B614 PH

## 1 BEDROOM + DEN

Exterior 138 sq.ft. Interior 614 sq.ft. Total 752 sq.ft.



**PENTHOUSE** 10' CEILINGS

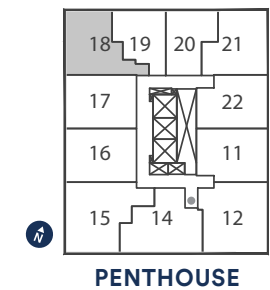
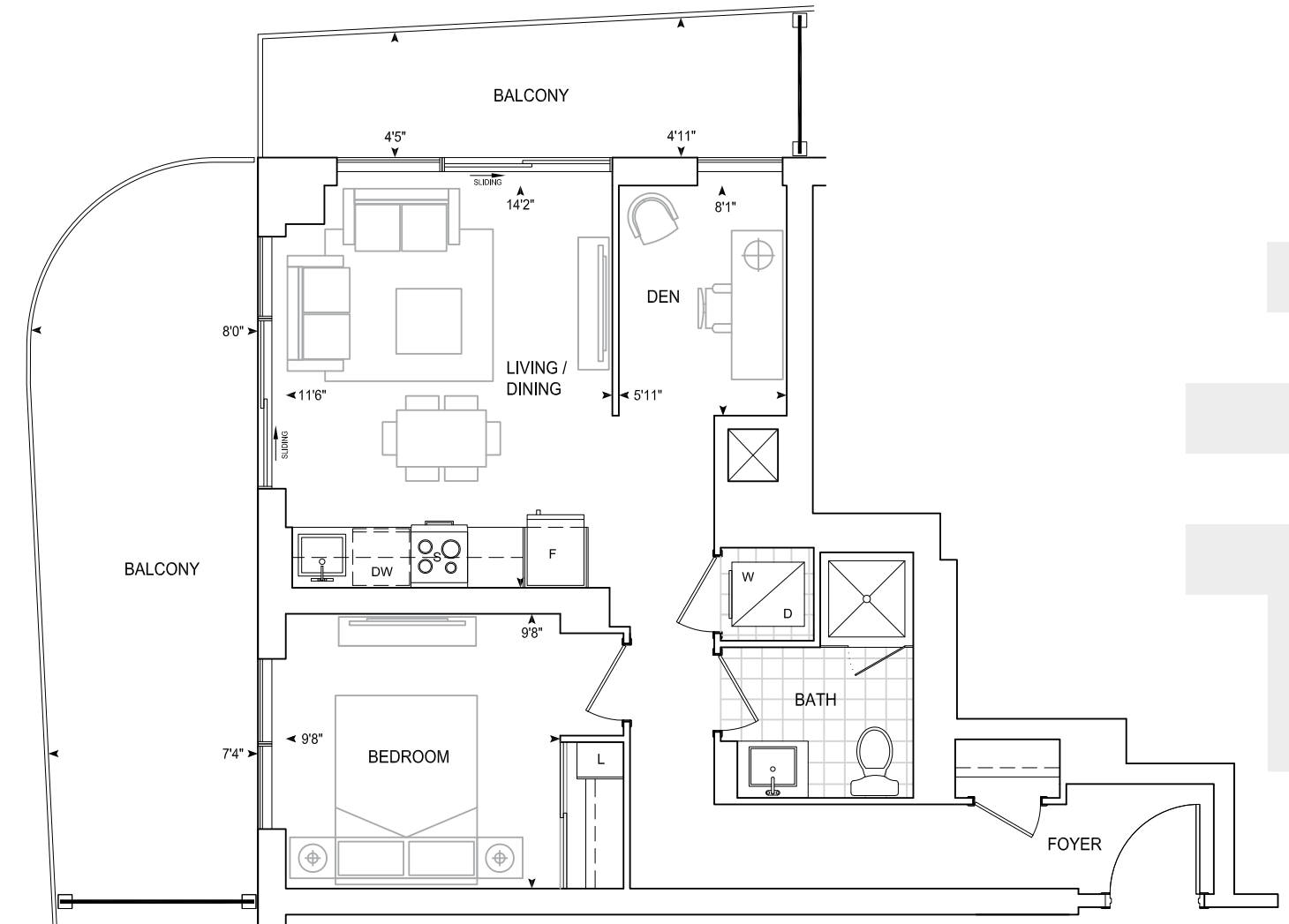


Dimensions, specifications, layouts, location of materials and fixtures, tile floor patterns and architectural detailing (including window size and location and door size, location and swing) are approximate only and are subject to change or modifications, without notice. Actual usable floor space varies from stated floor area. Orientation of suite may be reverse and Purchaser agrees to accept same. Balconies, terraces and patios are exclusive use common elements shown for display purposes only and location and size are subject to change without notice. All illustrations are artist concept only. The provisions of Schedule "X" of this Agreement, including Section 6 and 38 apply to this Schedule. E. & O.E. April 2024

# B626 PH

## 1 BEDROOM + DEN

Exterior 272 sq.ft. Interior 626 sq.ft. Total 898 sq.ft.



**PENTHOUSE** 10' CEILINGS

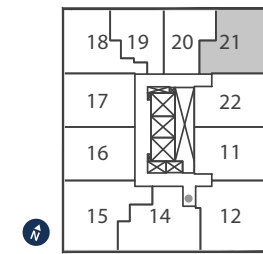
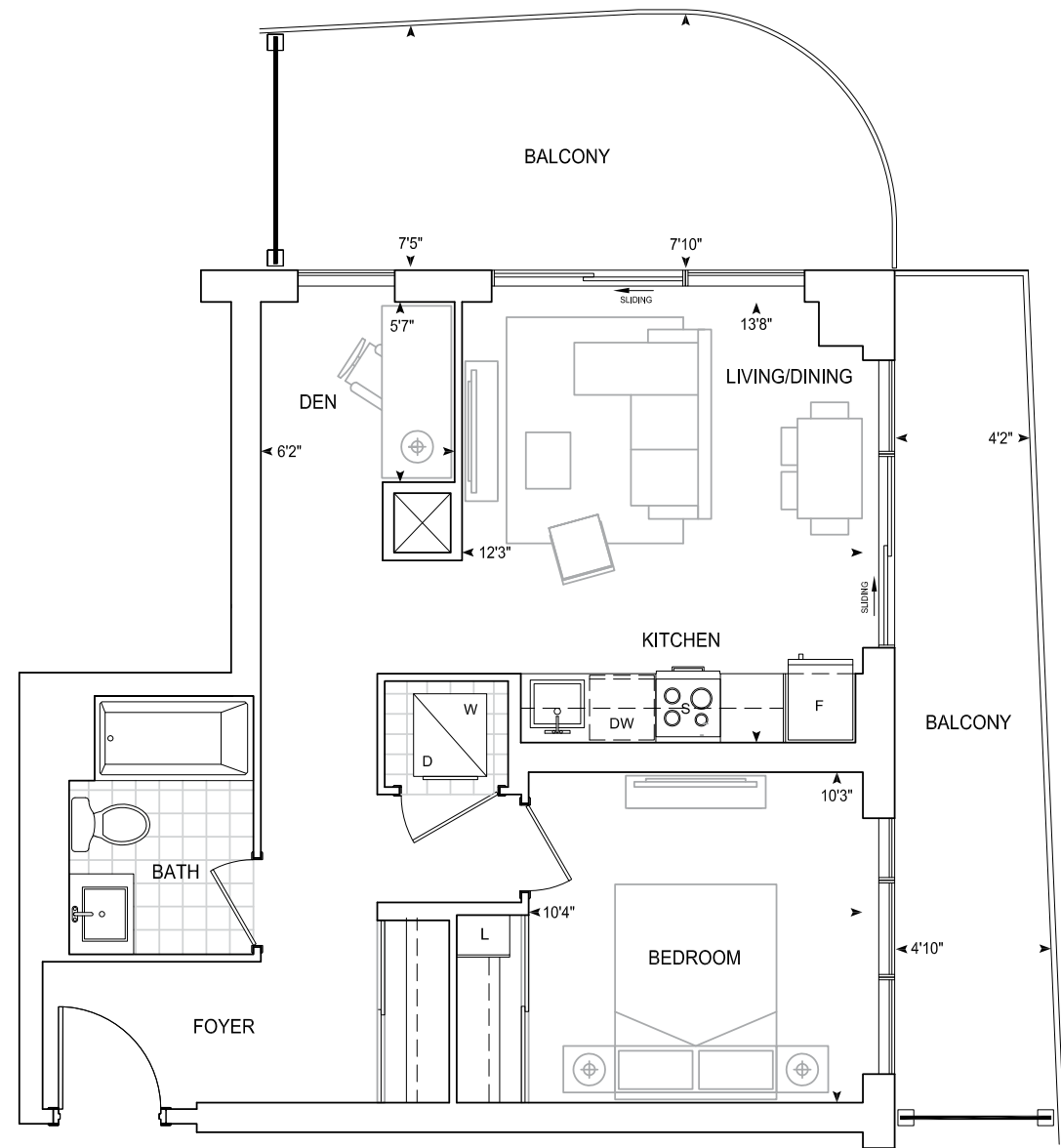


Dimensions, specifications, layouts, location of materials and fixtures, tile floor patterns and architectural detailing (including window size and location and door size, location and swing) are approximate only and are subject to change or modifications, without notice. Actual usable floor space varies from stated floor area. Orientation of suite may be reverse and Purchaser agrees to accept same. Balconies, terraces and patios are exclusive use common elements shown for display purposes only and location and size are subject to change without notice. All illustrations are artist concept only. The provisions of Schedule "X" of this Agreement, including Section 6 and 38 apply to this Schedule. E. & O.E. April 2024

# B627 PH

## 1 BEDROOM + DEN

Exterior 261 sq.ft. Interior 627 sq.ft. Total 888 sq.ft.



PENTHOUSE

PENTHOUSE 10' CEILINGS

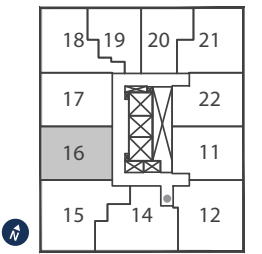
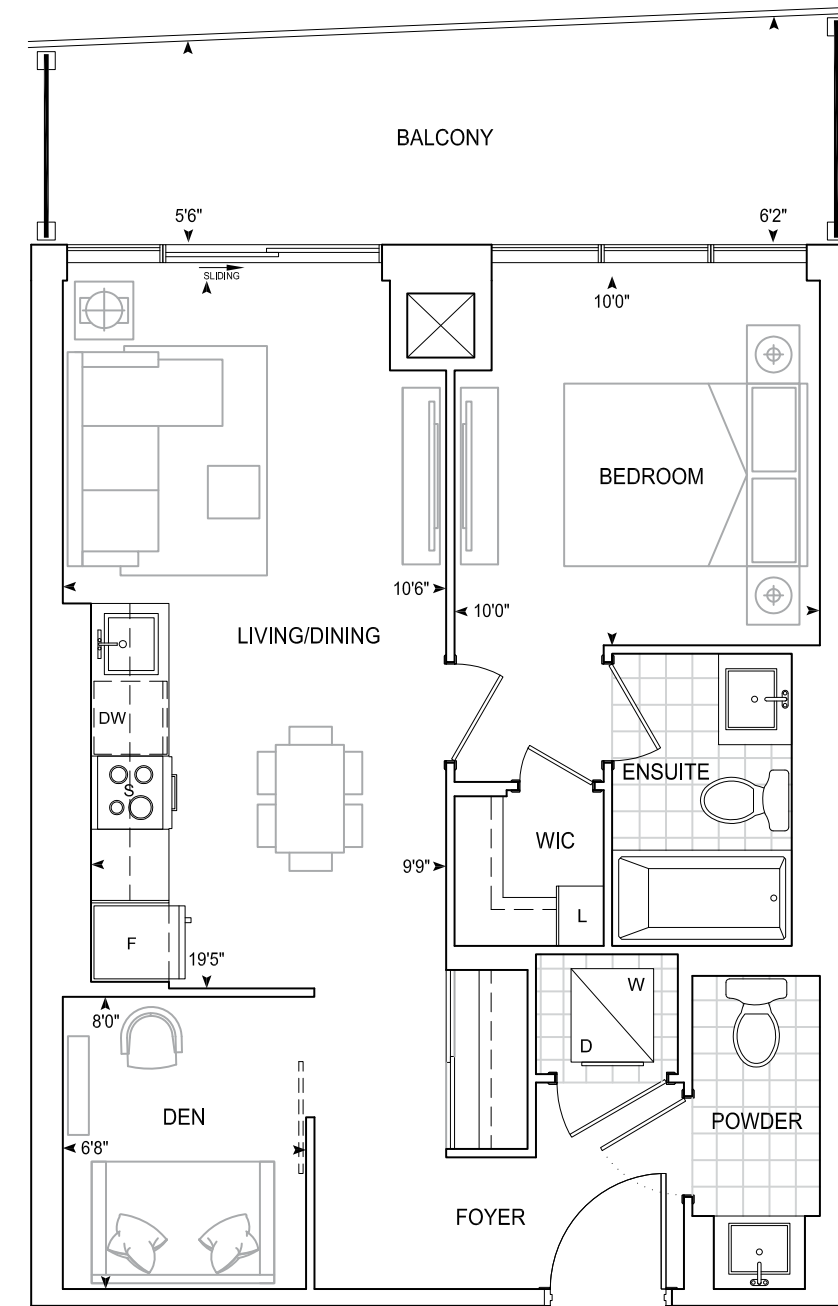


Dimensions, specifications, layouts, location of materials and fixtures, tile floor patterns and architectural detailing (including window size and location and door size, location and swing) are approximate only and are subject to change or modifications, without notice. Actual usable floor space varies from stated floor area. Orientation of suite may be reverse and Purchaser agrees to accept same. Balconies, terraces and patios are exclusive use common elements shown for display purposes only and location and size are subject to change without notice. All illustrations are artist concept only. The provisions of Schedule "X" of this Agreement, including Section 6 and 38 apply to this Schedule. E. & O.E. April 2024

# B637 PH

## 1 BEDROOM + DEN

Exterior 122 sq.ft. Interior 637 sq.ft. Total 759 sq.ft.



PENTHOUSE

PENTHOUSE 10' CEILINGS

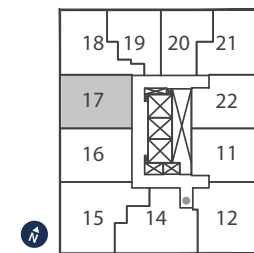
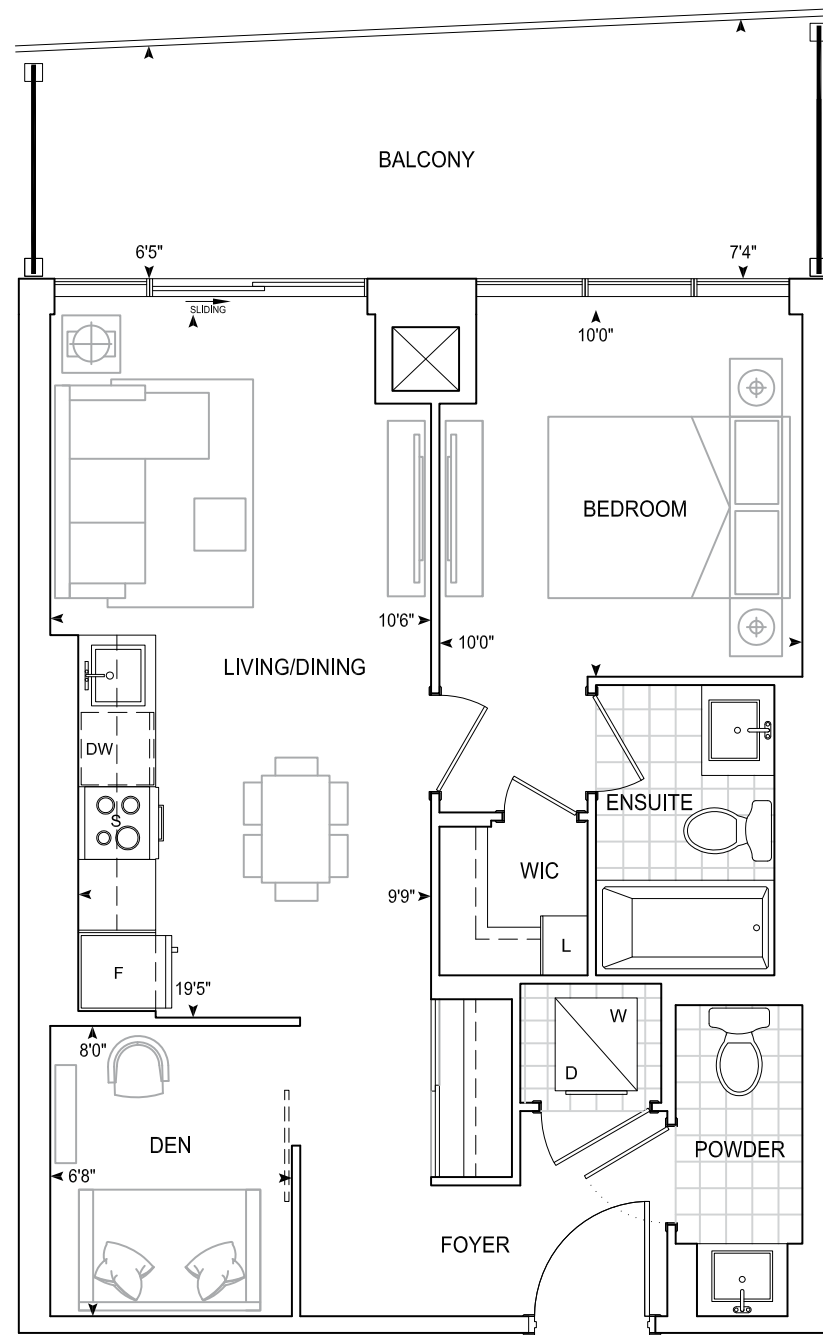


Dimensions, specifications, layouts, location of materials and fixtures, tile floor patterns and architectural detailing (including window size and location and door size, location and swing) are approximate only and are subject to change or modifications, without notice. Actual usable floor space varies from stated floor area. Orientation of suite may be reverse and Purchaser agrees to accept same. Balconies, terraces and patios are exclusive use common elements shown for display purposes only and location and size are subject to change without notice. All illustrations are artist concept only. The provisions of Schedule "X" of this Agreement, including Section 6 and 38 apply to this Schedule. E. & O.E. April 2024

# B637 PH

## 1 BEDROOM + DEN

Exterior 141 sq.ft. Interior 637 sq.ft. Total 778 sq.ft.



PENTHOUSE

**PENTHOUSE** 10' CEILINGS

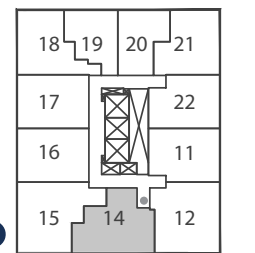
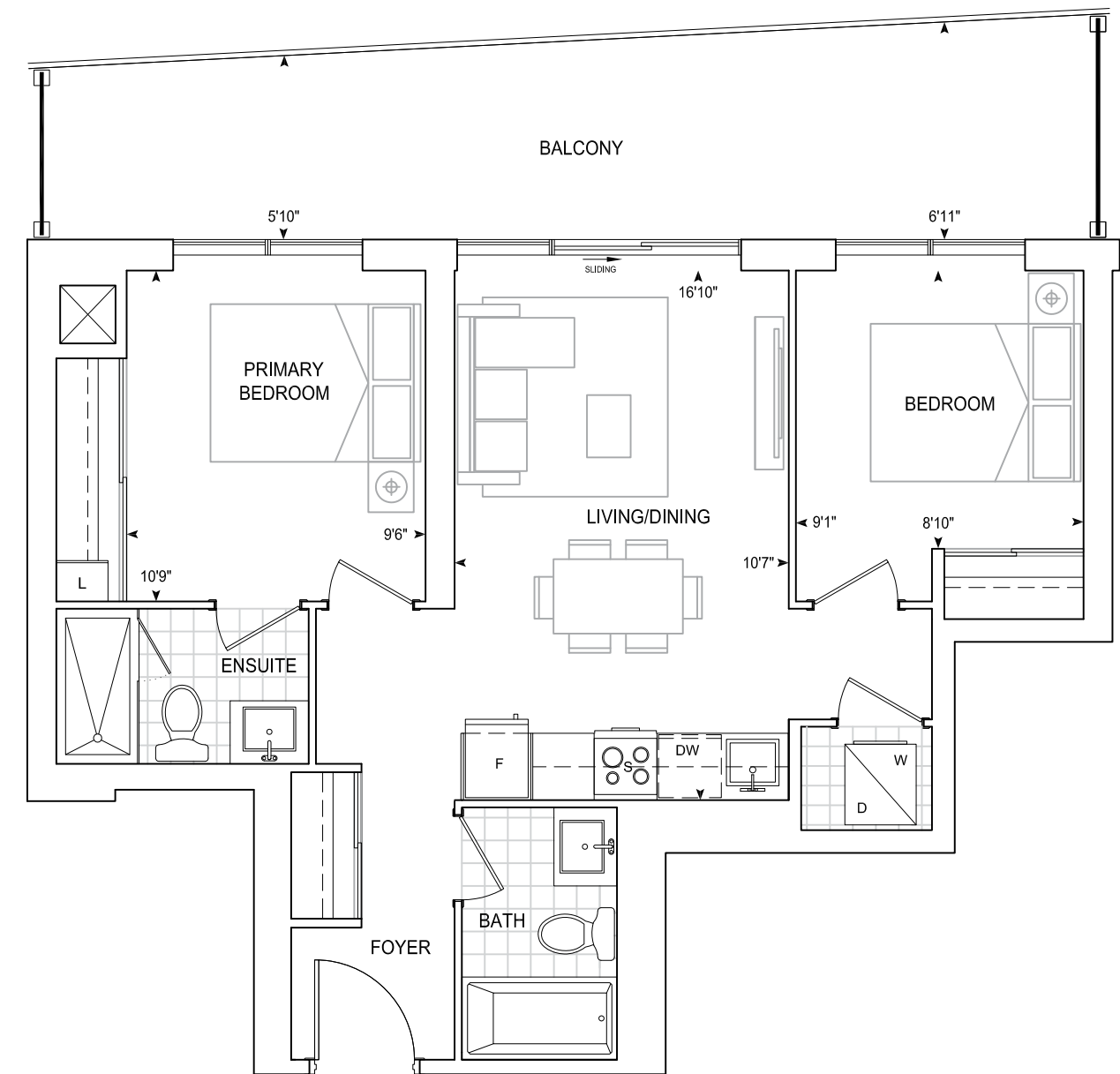


Dimensions, specifications, layouts, location of materials and fixtures, tile floor patterns and architectural detailing (including window size and location and door size, location and swing) are approximate only and are subject to change or modifications, without notice. Actual usable floor space varies from stated floor area. Orientation of suite may be reverse and Purchaser agrees to accept same. Balconies, terraces and patios are exclusive use common elements shown for display purposes only and location and size are subject to change without notice. All illustrations are artist concept only. The provisions of Schedule "X" of this Agreement, including Section 6 and 38 apply to this Schedule. E. & O.E. April 2024

# C703 PH

## 2 BEDROOM

Exterior 200 sq.ft. Interior 703 sq.ft. Total 903s sq.ft.



PENTHOUSE

**PENTHOUSE** 10' CEILINGS

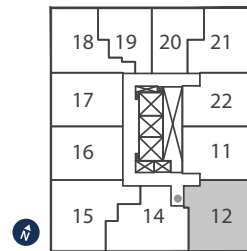
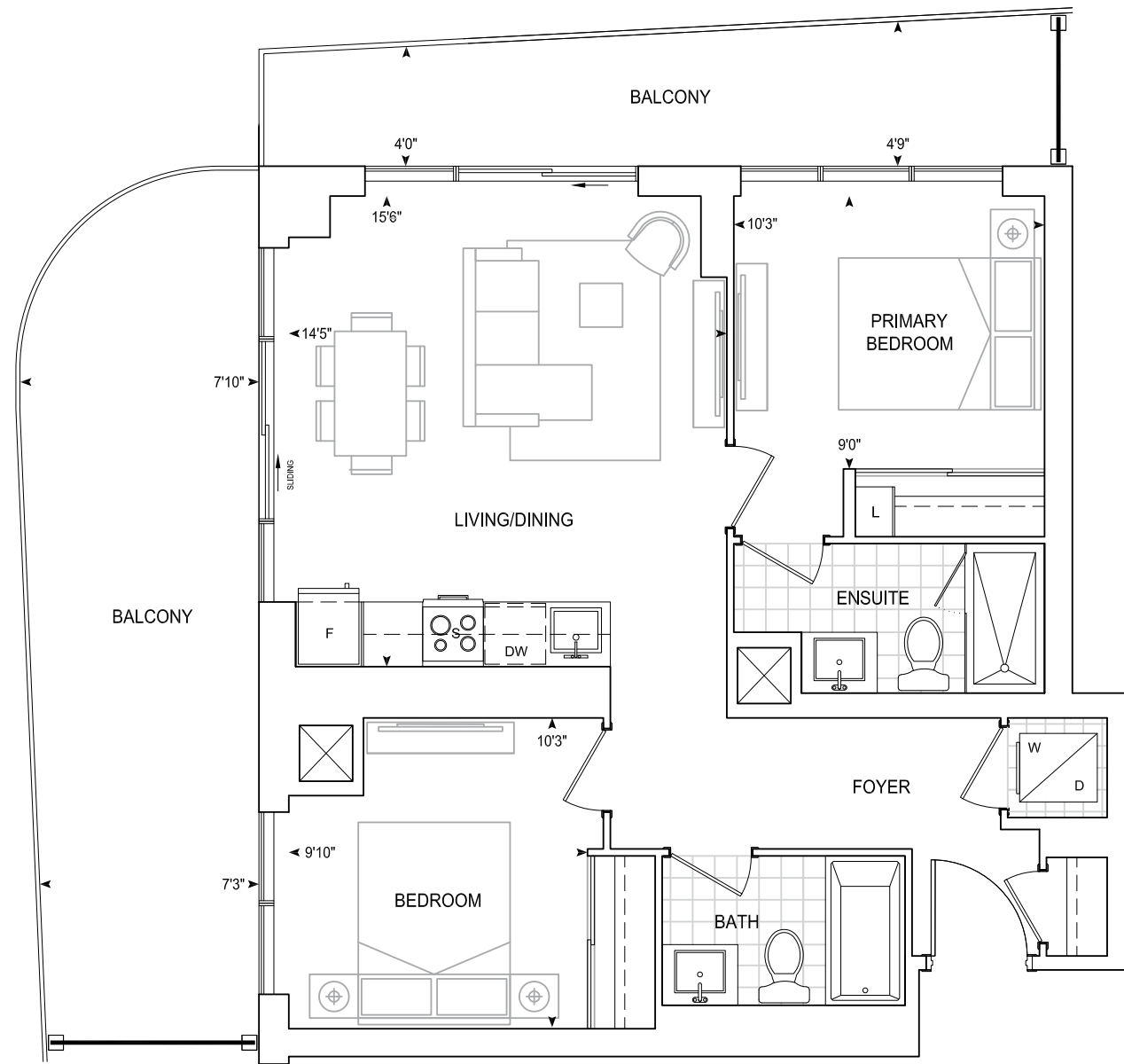


Dimensions, specifications, layouts, location of materials and fixtures, tile floor patterns and architectural detailing (including window size and location and door size, location and swing) are approximate only and are subject to change or modifications, without notice. Actual usable floor space varies from stated floor area. Orientation of suite may be reverse and Purchaser agrees to accept same. Balconies, terraces and patios are exclusive use common elements shown for display purposes only and location and size are subject to change without notice. All illustrations are artist concept only. The provisions of Schedule "X" of this Agreement, including Section 6 and 38 apply to this Schedule. E. & O.E. April 2024

# C778 PH

## 2 BEDROOM

Exterior 329 sq.ft. Interior 778 sq.ft. Total 1107 sq.ft.



PENTHOUSE

**PENTHOUSE** 10' CEILINGS

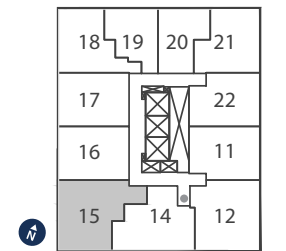
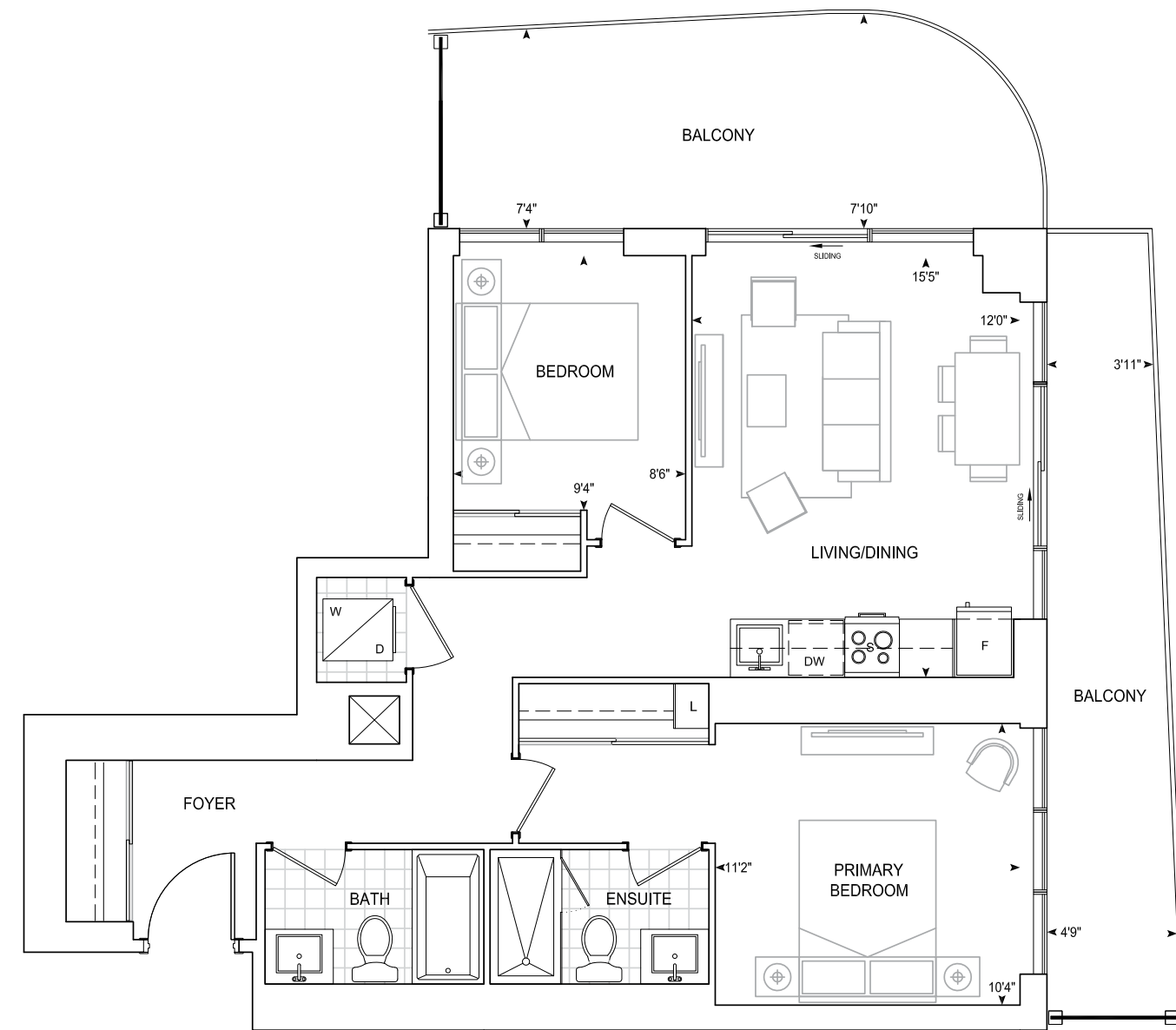


Dimensions, specifications, layouts, location of materials and fixtures, tile floor patterns and architectural detailing (including window size and location and door size, location and swing) are approximate only and are subject to change or modifications, without notice. Actual usable floor space varies from stated floor area. Orientation of suite may be reverse and Purchaser agrees to accept same. Balconies, terraces and patios are exclusive use common elements shown for display purposes only and location and size are subject to change without notice. All illustrations are artist concept only. The provisions of Schedule "X" of this Agreement, including Section 6 and 38 apply to this Schedule. E. & O.E. April 2024

# C804 PH

## 2 BEDROOM

Exterior 288 sq.ft. Interior 804 sq.ft. Total 1092 sq.ft.



PENTHOUSE

**PENTHOUSE** 10' CEILINGS



Dimensions, specifications, layouts, location of materials and fixtures, tile floor patterns and architectural detailing (including window size and location and door size, location and swing) are approximate only and are subject to change or modifications, without notice. Actual usable floor space varies from stated floor area. Orientation of suite may be reverse and Purchaser agrees to accept same. Balconies, terraces and patios are exclusive use common elements shown for display purposes only and location and size are subject to change without notice. All illustrations are artist concept only. The provisions of Schedule "X" of this Agreement, including Section 6 and 38 apply to this Schedule. E. & O.E. April 2024

# SKYVISION



## Digital Door Lock

Easily access your suite using your smartphone app or a unique passcode. Allow your guests to freely come and go by providing them secure access.



## In-Suite Wall Pad

This digital display allows you to easily interact with your suite and community. Create and set 'scenes' for different modes, such as morning, evening, or away by controlling your suite temperature and lights (optional) and blinds (optional). View designated community cameras, take pictures of suspicious activity, and use the live one-way video to view visitors and grant them access.

## Smart Light Switch

Your suite includes one smart light switch.



## Doorbell Camera (For Townhomes Only)

Enjoy peace of mind knowing your suite includes self-monitored security system. Use your wall pad or smartphone app to see who's outside when there is a ring at your door.

## Smoke Alarm & Flood Sensor

Your suite is equipped with an integrated smoke alarm and flood sensor that will alert you in case of an emergency on your wall pad or smartphone.



# SMART IS THE NEW STANDARD

## ADDITIONAL FEATURES\*



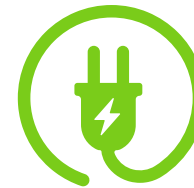
### A Connected Community

Be part of a community across one app experience. Stay up to date with community messaging, access community calendars, and book shared amenities.



### Virtual Mall

Stay connected to your local shops for exclusive deals and offerings in your community.



### Electric Vehicle Charging

Use your mobile app to see available charging stations in your community for your electric vehicle.



### Community Security

View designated community cameras, and use live, one-way video to view and grant access to visitors.

\*We may not offer all of these features. September 2023



**PRINCESS MARGARET  
LOTTERY HOME**  
King City, ON



# The People's Builder Since 1967



**GEORGIAN ESTATE  
COLLECTION**  
Oakville, ON



**330 RICHMOND**  
Toronto, ON

**DUNWEST CONDO**  
Oakville, ON



\*artist's impression

Since 1967, Greenpark Group has built over 82,000 homes and condos. Our high-rise success has been defined by impressive architecture, luxury finishes and intelligently designed suites and amenities. These condos are built to stand the test of time. We are proud to continue that tradition from one generation to the next.



\*artist's impression

**THE FIFTH AT  
CHARISMA**  
Vaughan, ON



**ELEMENTS**  
Milton, ON

\*artist's impression



**RED OAKS**  
Richmond Hill, ON

\*artist's impression

# Our Story



**SHAREWELL**  
Vaughan, ON

\*artist's impression



**THE BURLEAU**  
Burlington, ON

\*artist's impression

As a division of Greenpark Group, Trinity Point's team of experienced professionals have honed their craft with the country's leading developers and homebuilders. Every community we've built is a proud testament to our ability to deliver the highest quality and craftsmanship to buyers from all walks of life. At Trinity Point, our core values guide our approach to building, beginning with a vision for the finished home, mid-rise, high-rise, commercial or office space. Our history of excellence allows our team to seamlessly integrate tried-and-true practices with contemporary ideas that will move the industry forward.



**PLATFORM 68**  
Markham, ON

\*artist's impression



