



Unionglen

UNIONVILLE'S SIGNATURE COMMUNITY

by Madison Group



LIFE at UNIONGLEN by Madison Group

At the crossroads of Major Mackenzie Rd. East and Kennedy Road in North Markham, Unionglen introduces a harmonious approach to modern living.

Thoughtfully designed homes blend form and function, featuring unique layouts that enhance everyday life and support overall wellness. Filled with natural light, intuitive spaces, and contemporary finishes, each home is crafted to engage the senses; where comfort and beauty feel effortless.

Set within a peaceful enclave, Unionglen offers a rare sense of calm just moments from essential amenities, transit, and vibrant community hubs.

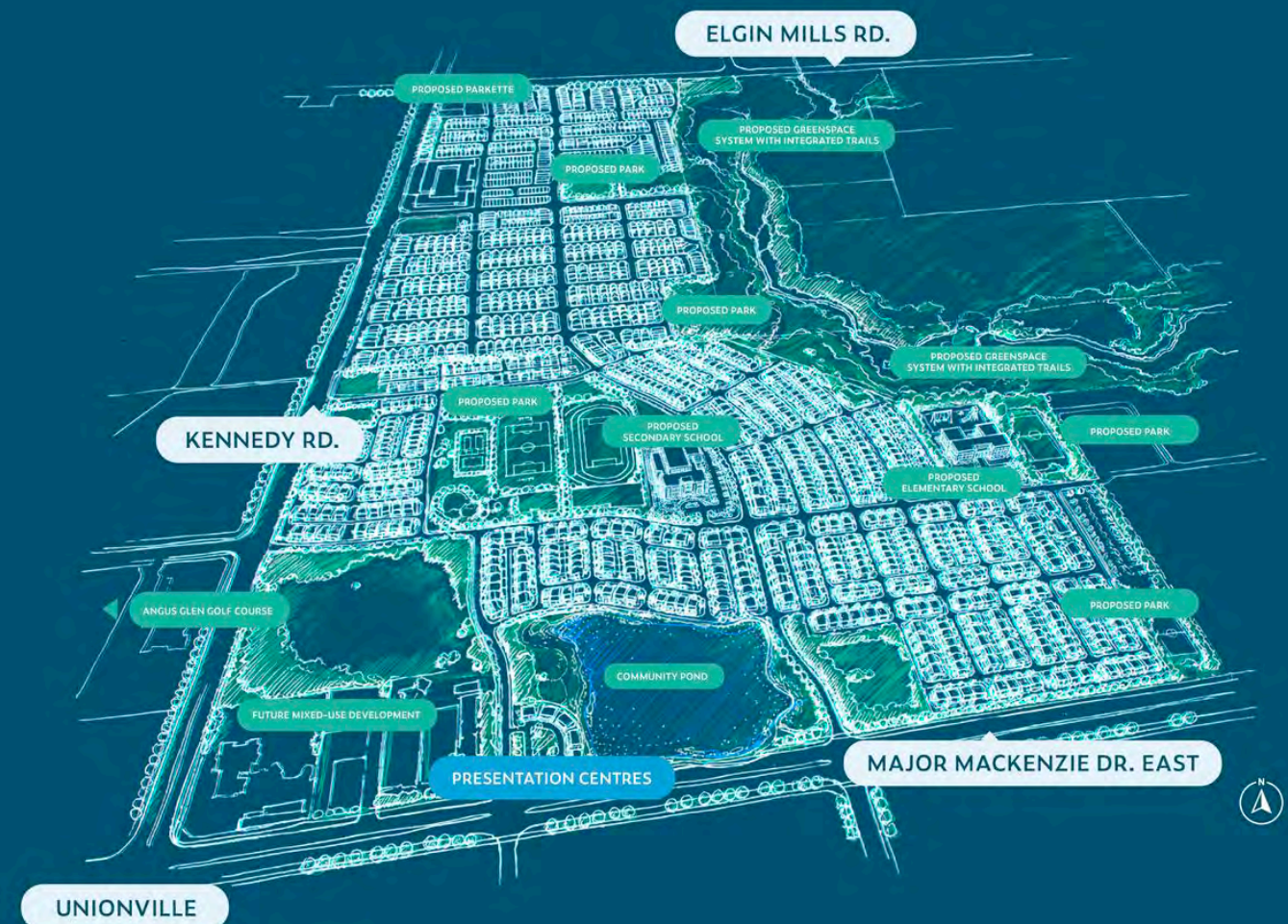
This is pure living, where quiet streets, intentional design, and connected convenience come together in perfect balance.



WHERE PRESTIGE meets BALANCED LIVING

Unionville's most anticipated community has arrived — perfectly positioned at the coveted crossroads of Kennedy and Major Mackenzie. Thoughtfully and meticulously designed to harmonize modern living with balance, nature, and connection, exquisitely crafted towns and singles stand as a testament to architectural excellence and elevated family living.

A GRAND VISION: UNIONVILLE'S SIGNATURE COMMUNITY





TRANSIT

ACCESS that MOVES you

Unionglen offers exceptional transportation access in the heart of North Markham, making every journey feel effortless.

With seamless connections to Highways 404 and 407, along with convenient transit and commuter options, getting where you need to go is effortless. Letting your daily commute fade into the rearview mirror.

Whether you're heading downtown or exploring the neighbourhood, Unionglen keeps you comfortably connected without compromising the calm of enclave living.



RECREATION

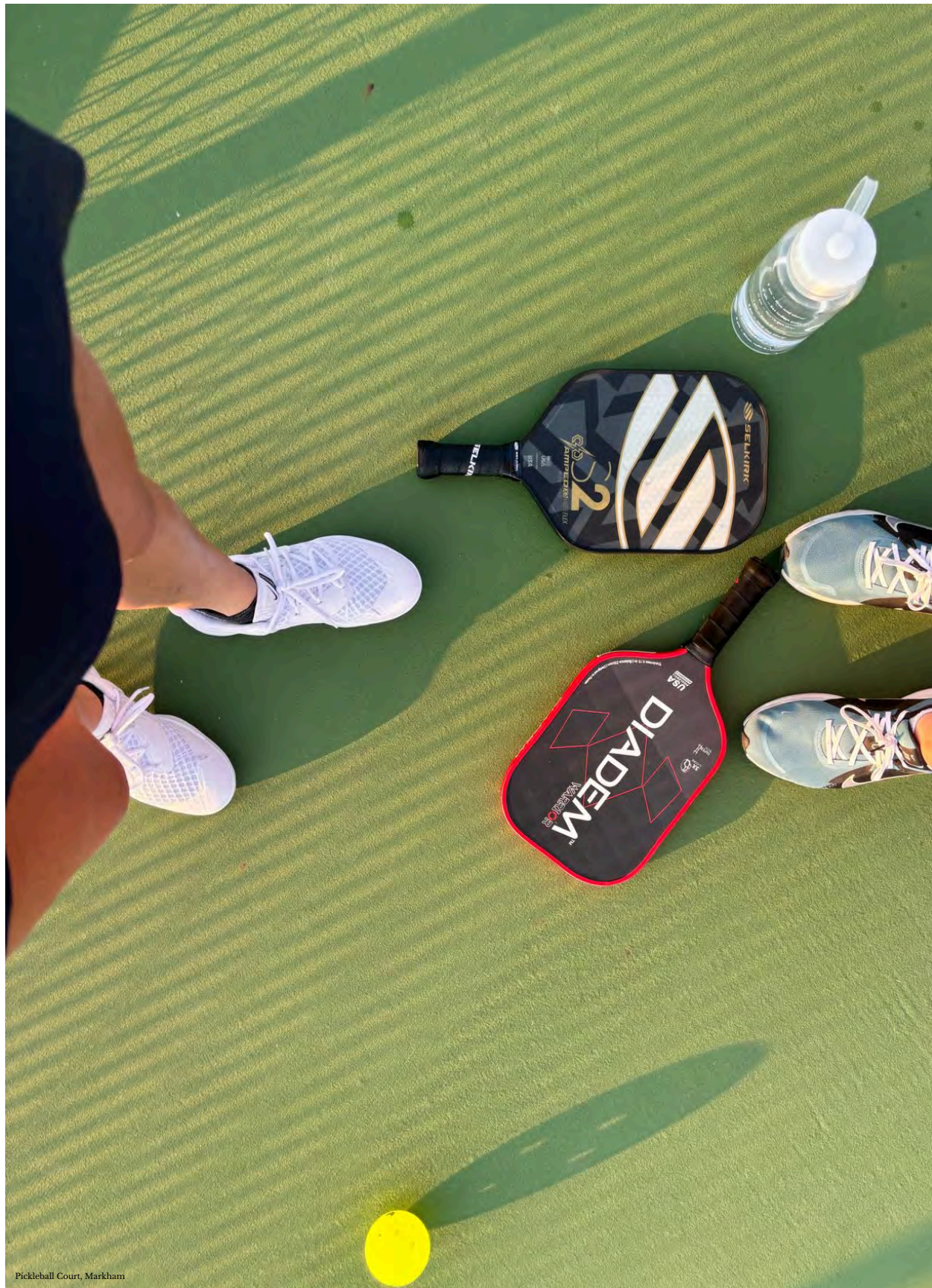
LIVE Balanced LIVE Well

In the heart of North Markham, Unionglen makes life feel effortlessly easy; where daily routines flow smoothly and family living feels naturally balanced.

The neighbourhood is anchored by leading schools, including Castlemore Public School, Stonebridge Public School, St. Augustine Catholic High School, and Markville Secondary School, providing children with a strong academic foundation close to home.

Beyond the classroom, residents enjoy exceptional recreation. Championship fairways at Angus Glen Golf Club and everyday outdoor escapes at Berczy Park offer space to unwind, play, and connect with nature.

Nearby parks, and abundant green space create room for unhurried mornings, family time, and mindful living. At Unionglen, educational excellence, recreation, and community come together in perfect harmony so families can focus on what truly matters.



Pickleball Court, Markham



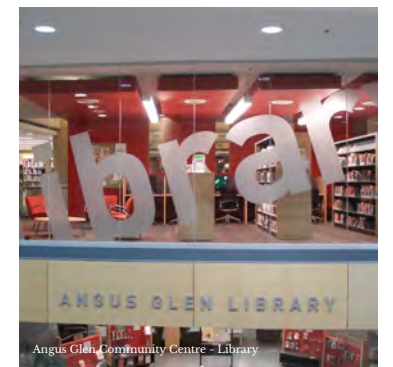
Unionville



Angus Glen Community Centre - Basketball Court



Angus Glen Community Centre



Angus Glen Community Centre - Library



Berey-Wycliffe Park in German Mills, Markham



Toogood Pond Park - Unionville

CHARMING STREETS

unforgettable
EATS

Just minutes from Unionglen, Unionville Main Street offers a vibrant mix of dining, entertainment, and everyday conveniences, bringing energy and flavour to your doorstep.

Stroll along charming Main Street Unionville and discover an inviting collection of cafés, patios, and local restaurants perfect for casual brunches, date nights, and family dinners. From wholesome eateries and fresh juice bars to diverse international cuisine, healthy and indulgent options live side by side.

Evenings are just as inviting, with nearby cinemas, community events, and cultural experiences adding to the neighbourhood's appeal. With quick access to Unionville's historic main street and its lively atmosphere, residents of Unionglen enjoy the perfect blend of serene living and vibrant urban charm.



DINING



Millennium Bandstand, Unionville



Old Firehall Confectionery, Unionville



Downtown Unionville



The Planing Mill - Unionville



Old Country Inn Restaurant - Unionville

STEPS from ESSENTIALS

At Unionglen, proximity to Unionville's established retail landscape brings an added layer of ease to daily living.

Just minutes away, the charming storefronts along Main Street Unionville offer a boutique-style experience, while the contemporary convenience of CF Markville is complemented by nearby grocers, markets, pharmacies, and essential services that support the practical rhythm of family life.

From fresh produce to everyday necessities, everything required for the week ahead is thoughtfully within reach.

This balance of curated retail and real-world convenience allows shopping to feel less like an obligation and more like a seamless part of a well-composed routine, leaving more time for meaningful connection and the quiet enjoyment of home and community.



SHOPPING





UNIONVILLE

MARKHAM

RICHMOND HILL



Necessities

- 1 Canadian Tire
Starbucks
Shoppers Drug Mart
CIBC Branch with ATM
Shell
Scotiabank
Canada Post
RBC Royal Bank
TD Canada Trust Branch and ATM
- 2 FreshCo McCowan & Bur Oak
- 3 FreshCo Major MacKenzie & Leslie
- 4 Costco Wholesale
- 5 Walmart Supercentre
- 6 Esso
- 7 BMO Bank of Montreal
- 8 The Home Depot
- 9 CF Markville
- 10 LCBO
- 11 Markham Stouffville Hospital
- 12 Healthy Planet - Markham
- 13 Calabria Bakery
- 14 The Village Grocer
- 15 Loblaws Bullock Drive
- 16 T&T Supermarket Unionville Store
- 17 Longo's Markham

Cafe & Restaurants

- 1 Booster Juice
- 2 CoCo Fresh Tea & Juice
- 3 JOEY Markville
- 4 OUT OF OFFICE COFFEE + BAKERY
- 5 Il Postino
- 6 NextDoor Restaurant
- 7 Sumoki Yakitori
- 8 Komeya
- 9 Kingsfield Chinese Cuisine
- 10 Symposium Cafe Restaurant Markham

Bike & Walking Trails

- 1 Monarch Trail
- 2 Tanglewood Trail
- 3 Rouge Valley Trail
- 4 Toogood Pond Park Trail
- 5 Milne Dam Conservation Park

Schools & Childcare

- 1 Angus Glen Montessori School
- 2 Fred Varley Public School
- 3 Stonebridge Public School
- 4 St. Brother André Catholic High School
- 5 St. Augustine Catholic High School
- 6 Little Miracles Child Care & Learning Centre
- 7 Love n' Learn Childcare Centre
- 8 All Saints Catholic Elementary School
- 9 Pierre Elliott Trudeau High School
- 10 St. Monica Catholic Elementary School

Wellness

- 1 The Bike and Barre Studio
- 2 YGO Juice & Tea Lab
- 3 Oxygen Yoga & Fitness Bur Oak Markham
- 4 Forward Motion Yoga
- 5 F45 Training Markville
- 6 Iron Fitness Strength Club
- 7 Water Sense Spa
- 8 Go Place
- 9 LA Fitness
- 10 GoodLife Fitness Markham
- 11 Markham YMCA

Parks & Recreation

- 1 Angus Glen Golf Club
- 2 Angus Glen Community Centre
- 3 Markham Fairgrounds
- 4 Markham Civic Centre
- 5 Toogood Pond
- 6 Upper Unionville Golf Club
- 7 Wismer Park
- 8 Swan Lake Park
- 9 Cineplex Cinemas Markham and VIP
- 10 Flato Markham Theatre

Pets

- 1 Apple Creek Animal Hospital
- 2 Just Fur Fun Dog Daycare and Training
- 3 Animal Hospital Of Unionville
- 4 Dogeden
- 5 Berczy Dog Park
- 6 Miller Avenue Off-Leash Dog Park
- 7 Victoria square Pop up dog park
- 8 Pet Valu
- 9 PetSmart

Transit





YOUR
NEXT
CHAPTER

Starts here.

Rear Lane Towns

Discover The Zen Collection, a series of 15' three-storey rear lane towns designed for urban living in a thriving community.

With a three or four-bedroom layout with optional Gen-suite, functional ground-floor designs, and a spacious second-floor private outdoor area perfect for seamless indoor and outdoor gatherings. These homes foster a lifestyle that prioritizes wellness, relaxation, and connection.

THE ZEN COLLECTION







Model: The Grove - Kitchen / Dining



Rear Lane Towns

Discover the Ritual Collection, a series of 20' three-storey rear lane towns where modern design meets functional living. Featuring flexible floorplans with three or four-bedroom plans, home offices, optional generational suites, double-car garage, and a private outdoor space.

The Ritual collection creates a harmonious balance of comfort, functionality, and style.

THE RITUAL COLLECTION





Traditional Town's

The Purist Collection offers 21' two-storey street townhomes designed for those who prefer a timeless approach to architecture and design.

Each home offers spacious layouts with four-bedroom plans, an optional coach house, and a private backyard. These homes combine classic design with modern conveniences, making them an ideal choice for those seeking both comfort and elegance.

THE PURIST COLLECTION







Model: The Pure - Kitchen / Great Room

Courtyard Towns

Experience the perfect balance of comfort and functionality in the Senses Collection, a collection of 22' three-storey townhomes that combine traditional design with modern conveniences.

Boasting four to five-bedroom plans, recreational rooms, private outdoor courtyards, and rear lane parking with a double-car garage, these homes were thoughtfully crafted to enhance your living experience.

THE SENSES COLLECTION









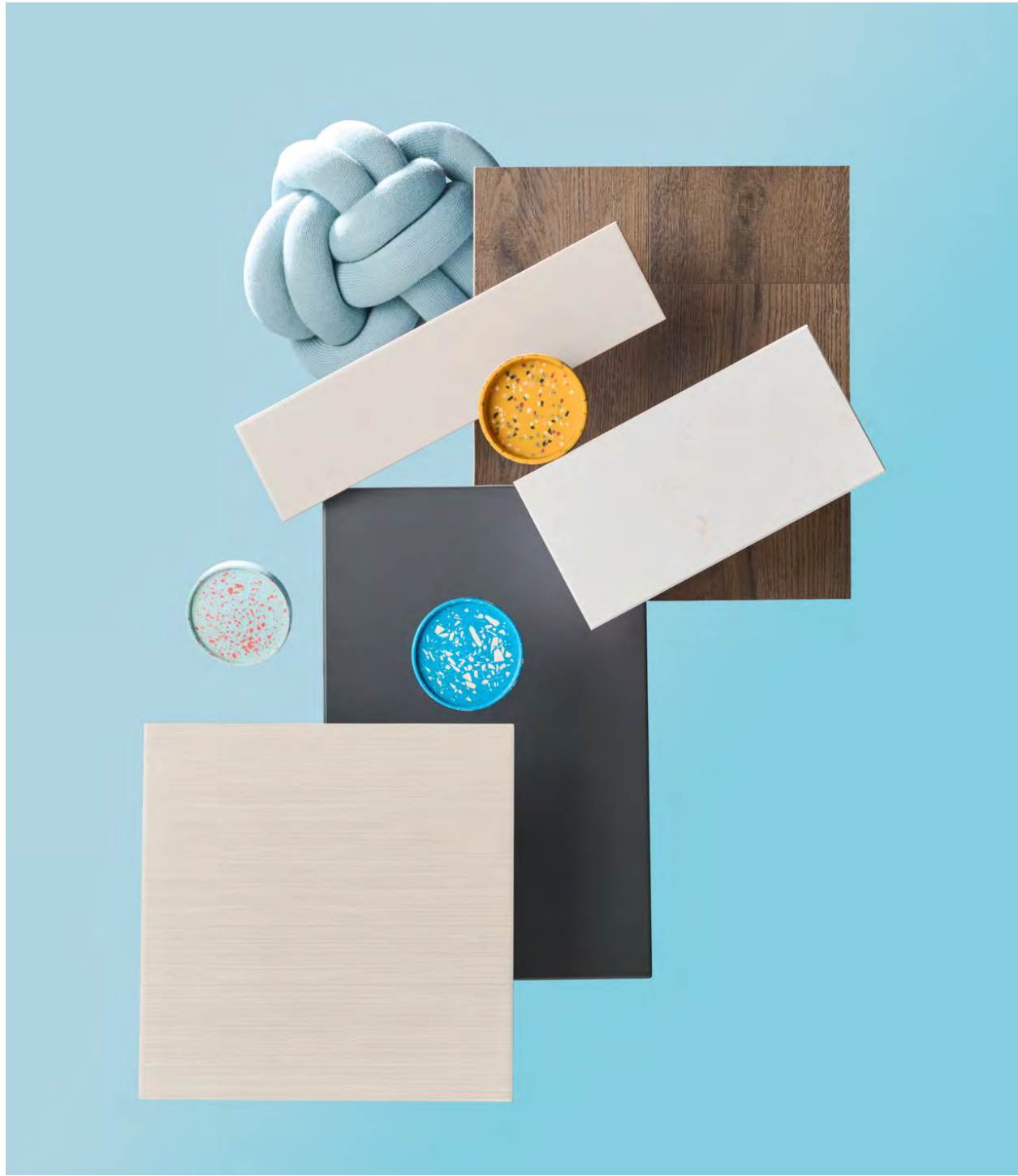


Styled LIVING

At Unionglenn, every home begins with a vision and Madison Group's award-winning Design Studio brings that vision to life.

Homeowners can explore a carefully curated selection of premium finishes, fixtures, and materials, choosing from a wide array of options to create a space that truly reflects their personal style.

From modern kitchens to spa-inspired bathrooms, every detail is designed with function, beauty, and comfort in mind, ensuring your dream home is not just built, but crafted with intention.



INSPIRATION



INSPIRATION

MADISON GROUP

60
years

Over the years, Madison Group has been honoured with several awards celebrating excellence in industry achievement, charitable contributions, community involvement, and corporate social responsibility.

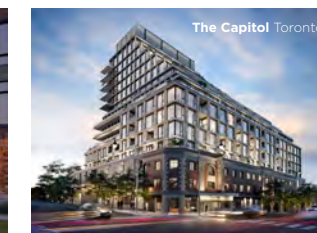
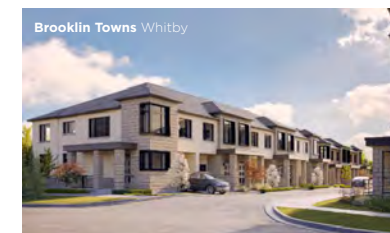
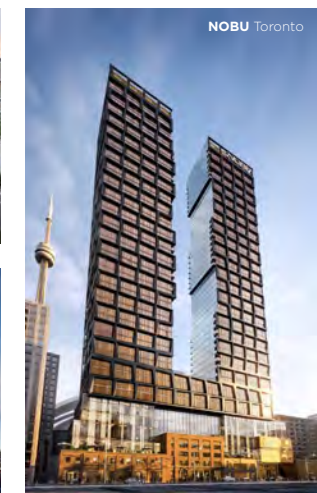
Here are some of our standout accolades:



Madison Group has evolved from a successful family business into a multi-faceted company that owns, develops, and manages landmark residential, commercial and hospitality properties. Madison's extensive portfolio includes low-rise master planned communities, mixed-use high-rise projects, office, retail, prestige industrial, hospitality and retirement properties throughout Toronto and New York.

Madison continues to set the standard for value, design, and customer experience across the Greater Toronto Area. The company is dedicated to creating vibrant, integrated communities rooted in highly desirable locations that elevate the lifestyle of their residents.

Developments are brought to life with innovative architecture and thoughtful design, resulting in dynamic destinations including Cornell Rouge, Greensborough, and Upcountry in Markham; Jefferson Forest in Richmond Hill; Vellore Woods, Legacy; Thornhill Ravines and Real Towns in Vaughan; Frenchman's Bay and NuTowns in Pickering, Brooklin Towns in Whitby, Briar Hill City Towns and MILA in Toronto, Wild Indigo in Kitchener-Waterloo Region as well as high-rise projects such as The Madison at Yonge & Eglinton; ZIGG St. Clair West, Nobu Residences Toronto and most recently The Capitol Residences and Alias in Toronto.





PRESENTED BY

MADISON
GROUP

All renderings are artist's concept. All information contained herein is believed to be accurate at the time of printing and is subject to change without notice. Furniture, décor, and accessories shown in renderings are for illustration purposes only and are not included in the purchase.

E. & O.E. February 2026.